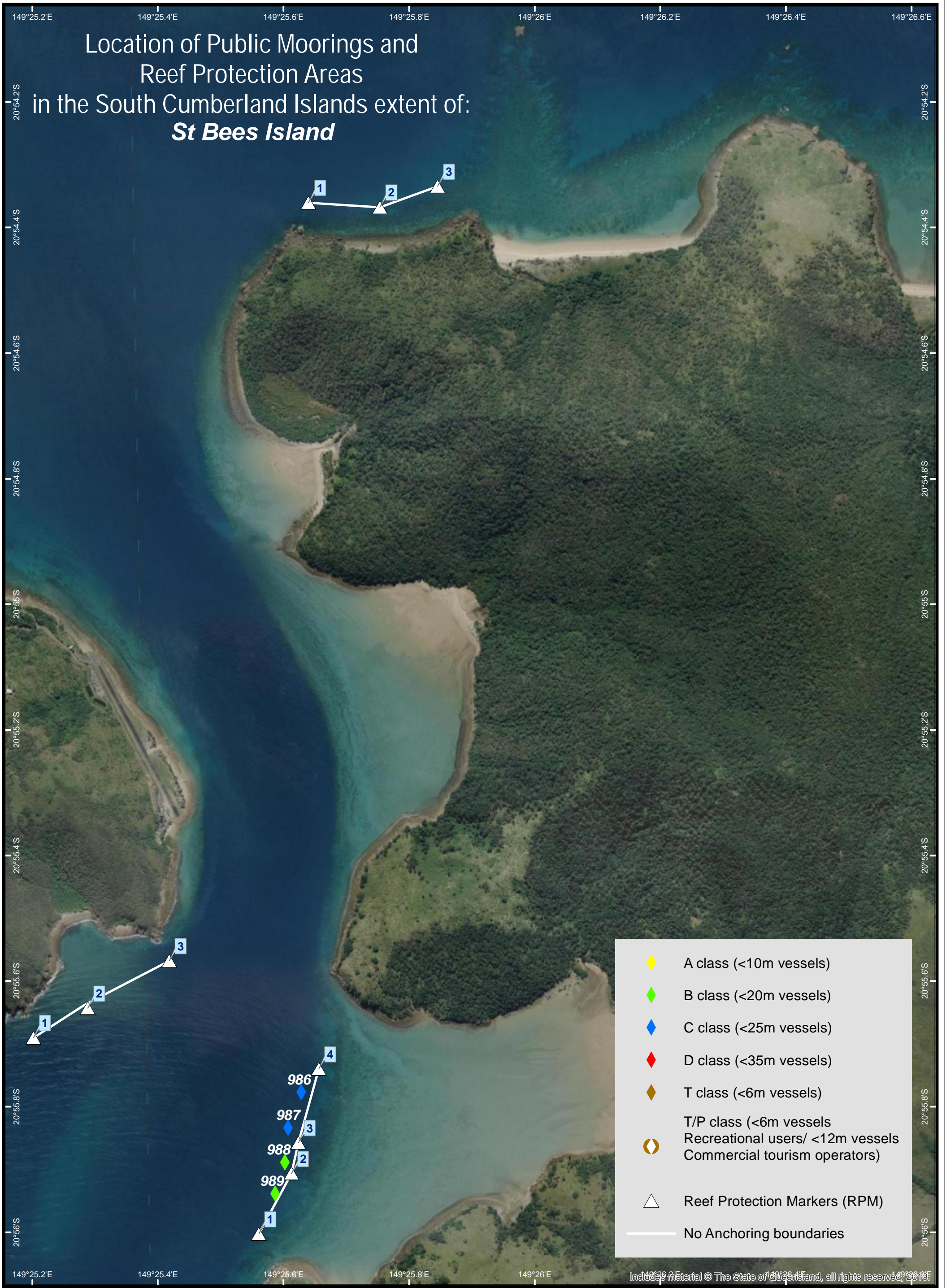
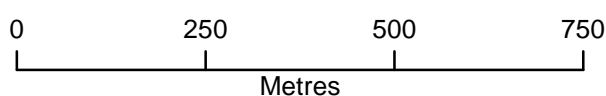


# Location of Public Moorings and Reef Protection Areas in the South Cumberland Islands extent of: *St Bees Island*



- ◆ A class (<10m vessels)
- ◆ B class (<20m vessels)
- ◆ C class (<25m vessels)
- ◆ D class (<35m vessels)
- ◆ T class (<6m vessels)
- ◆ T/P class (<6m vessels  
Recreational users/ <12m vessels  
Commercial tourism operators)
- Reef Protection Markers (RPM)
- No Anchoring boundaries

Includes material © The State of Queensland, all rights reserved, 2015



COORDINATE SYSTEM: GCS GDA 1994  
HORIZONTAL DATUM: GDA 1994

