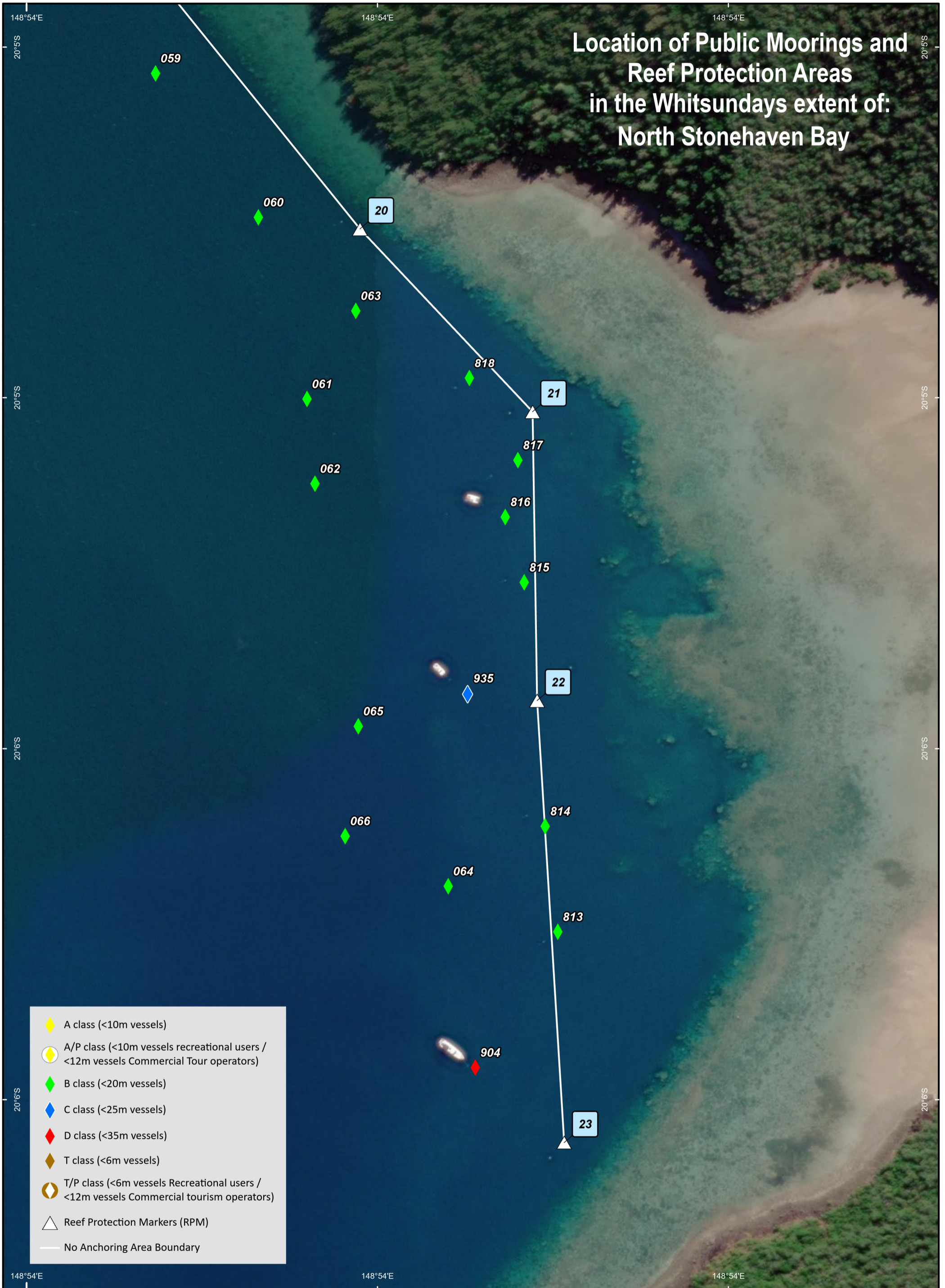
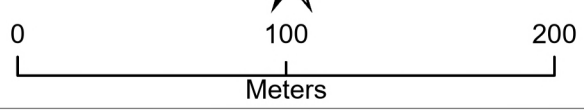


Location of Public Moorings and Reef Protection Areas in the Whitsundays extent of: North Stonehaven Bay



- ◆ A class (<10m vessels)
- ◊ A/P class (<10m vessels recreational users / <12m vessels Commercial Tour operators)
- ◆ B class (<20m vessels)
- ◆ C class (<25m vessels)
- ◆ D class (<35m vessels)
- ◆ T class (<6m vessels)
- ◊ T/P class (<6m vessels Recreational users / <12m vessels Commercial tourism operators)
- △ Reef Protection Markers (RPM)
- No Anchoring Area Boundary



COORDINATE SYSTEM: GCS GDA 1994
HORIZONTAL DATUM: GDA 1994

