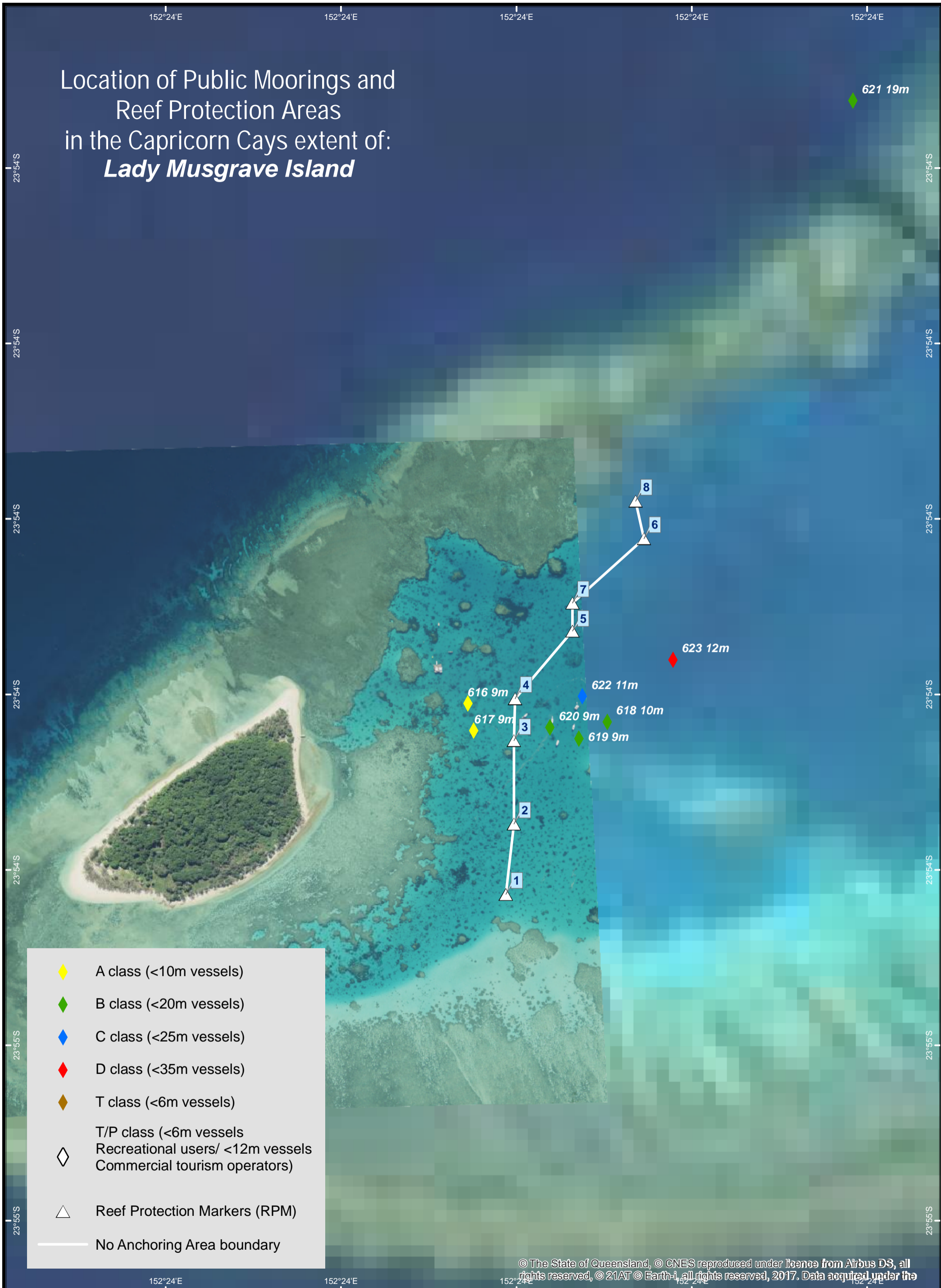


Location of Public Moorings and Reef Protection Areas in the Capricorn Cays extent of: *Lady Musgrave Island*



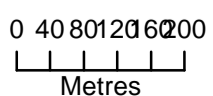
- ◆ A class (<10m vessels)
- ◆ B class (<20m vessels)
- ◆ C class (<25m vessels)
- ◆ D class (<35m vessels)
- ◆ T class (<6m vessels)
- ◆ T/P class (<6m vessels
Recreational users/ <12m vessels
Commercial tourism operators)
- Reef Protection Markers (RPM)
- No Anchoring Area boundary

© The State of Queensland, © CNES reproduced under licence from Airbus DS, all rights reserved, © 21AT © Earth-i, all rights reserved, 2017. Data acquired under the

152°24'E 152°24'E 152°24'E 152°24'E 152°24'E

23°54'S 23°54'S 23°54'S 23°54'S 23°54'S 23°54'S 23°55'S 23°55'S 23°55'S

23°54'S 23°54'S 23°54'S 23°54'S 23°54'S 23°54'S 23°55'S 23°55'S 23°55'S



COORDINATE SYSTEM: GCS GDA 1994
HORIZONTAL DATUM: GDA 1994

