

# Application form

Heritage

## Entry of a place in the Queensland Heritage Register

*Use this form to apply to have a place considered for entry in the Queensland Heritage Register under the Queensland Heritage Act 1992.*

**Before completing this application form:**

- read the *Application Guide: Entering a State Heritage Place in the Queensland Heritage Register* available at [www.qld.gov.au/environment/land/heritage/](http://www.qld.gov.au/environment/land/heritage/)
- call 13 QGOV (13 74 68) and discuss this application with the Applications Coordinator, Heritage Branch

### 1. Applicant details

### 2. Applicant consent

Ticking YES in the box below means you give consent to the department to publicly disclose your name with this application. At no time (whether you tick YES or NO) will your personal contact details be made public during processing and assessment of this application. The department removes contact details (i.e. address, email and telephone numbers) from all copies of the application except those provided to the Queensland Heritage Council.

<b>Applicant consents to personal information being released</b>		Yes <input type="checkbox"/>	No <input checked="" type="checkbox"/>
APPLICANT'S SIGNATURE [REDACTED]			
PRINT APPLICANT'S NAME [REDACTED]		DATE SIGNED 24/03/2026	

## Entry of a place in the Queensland Heritage Register

### 3. Place details

NAME OF PLACE AND / OR FORMER NAME Gowrie House	
STREET ADDRESS 122 Margaret Street, East Toowoomba	
LOT/S ON PLAN/S <b>5 SP229169</b>	LOCAL GOVERNMENT AREA/S Toowoomba Regional Council
GPS COORDINATES (IF KNOWN) -27.55973046, 151.96688621	

### 4. Consultation with the owner of the place

Do you own the place that is the subject of this application?                      Yes                       No

If you are not the owner of this place, have you consulted with the owner?                      Yes                       No

### 5. History of the place

HISTORICAL SUMMARY Refer Attachment 1 Section 3
REFERENCE LIST Refer Attachment 1 Section 15
LIST OF ATTACHMENTS Attachment 1 – Boundary amendment submission for Gowrie House

### 6. Description of the place

WRITTEN DESCRIPTION Refer Attachment 1 Section 4
---

## Entry of a place in the Queensland Heritage Register

### 7. Statement of cultural heritage significance

Decide which criteria are relevant to your application and complete a response for each in the boxes below. Write 'not applicable' against the criteria that are not relevant to your application.

CRITERION A the place is important in demonstrating the evolution or pattern of Queensland's history	Refer Attachment 1 Section 5
CRITERION B the place demonstrates rare, uncommon or endangered aspects of Queensland's cultural heritage	Refer Attachment 1 Section 4
CRITERION C the place has potential to yield information that will contribute to an understanding of Queensland's history	N/A
CRITERION D the place is important in demonstrating the principal characteristics of a particular class of cultural places	N/A
CRITERION E the place is important because of its aesthetic significance	N/A
CRITERION F the place is important in demonstrating a high degree of creative or technical achievement at a particular period	N/A
CRITERION G the place has a strong or special association with a particular community or cultural group for social, cultural or spiritual reasons	N/A
CRITERION H the place has a special association with the life or work of a particular person, group or organisation of importance in Queensland's history	Refer Attachment 1 Section 4

## Entry of a place in the Queensland Heritage Register

### 8. Site plan showing proposed boundary

Attach a site plan to this form. Tick to confirm:

- the site plan is drawn or sketched to scale
- all significant heritage elements of the place are shown and clearly labelled in their approximate locations
- the proposed heritage boundary is shown
- the cadastral (lot on plan) boundaries of the place are shown

### 9. Photographs

Attach photographs to this application that show the place in its current state. Number all photographs and complete the index table below adding more rows if needed.

If submitting an electronic application, submit the photographs in a digital file attached with the application form. Maximum file size for digital images attached to this form is 250kb each.

If submitting an application in hard copy, submit the photographs as an electronic file saved onto a CD or USB and attach one hardcopy print out of images to this application form.

DATE AND TIME TAKEN Refer Attachment 1 Section 14	PHOTOGRAPHER	
<p>COPYRIGHT PERMISSIONS <i>By law copyright of material submitted is subject to conditions set out in the copyright licence for that material.</i></p> <p><i>Please enter licensing details in the metadata for each image/file requiring copyright.</i></p> <p><i>A copyright licence may be obtained free of charge from Creative Commons at <a href="http://www.creativecommons.org">www.creativecommons.org</a>. Creative Commons licence 'Creative Commons Attribution-Non-Commercial-No Derivative Works' is recommended. This licence maintains author copyright but allows others to copy and distribute work provided the author is given credit (in a way specified by the author) and the work is not changed in any way and is not used commercially.</i></p>		
IMAGE NUMBER	FILE NAME	DESCRIPTION

## Entry of a place in the Queensland Heritage Register

---

### 10. Lodgement

All sections of this form must be completed and attachments prepared (in particular the site plan showing the proposed heritage boundary and photographs of the place) before an application is lodged. Incomplete applications cannot be accepted.

**Send one copy of the completed form and attachments to:**

**Email:**

heritage@des.qld.gov.au

**OR**

**Post:**

Applications Coordinator  
Heritage Branch  
Arts and Heritage  
Department of Environment and Science  
GPO Box 2454  
Brisbane Qld 4001

### Further information

- email [heritage@des.qld.gov.au](mailto:heritage@des.qld.gov.au)
- call 13 QGOV (13 74 68) and ask to speak to the Applications Coordinator, Heritage Branch
- visit [www.qld.gov.au/environment/land/heritage/](http://www.qld.gov.au/environment/land/heritage/)

# Attachment 1

Submission to the Queensland Heritage Council

Gowrie House (601307) – 112 Mary Street, East Toowoomba

Amendment to Heritage Boundary Mapping for Complete Inclusion of the Betty Willis Wing (1991) within Boundary Mapping



# Contents

1. Purpose of Submission .....	3
2. Existing listing .....	6
3. Summary of Significance .....	7
4. Historical Context .....	8
4.1 Establishment of the YWCA Toowoomba (1932–1945).....	8
4.2 Expansion of the Hostel Complex (1945–1988) .....	9
4.3 Construction and Context of the Betty Willis Wing (1988–1991) .....	9
4.4 Housing Accommodation Assistance Scheme (HAAS) Funding Context .....	11
4.5 Construction and Opening of the Betty Willis Wing (1990–1991) .....	14
4.6 Operational and Historical Significance of the Betty Willis Wing .....	14
5. Physical description .....	16
6. Assessment Against Heritage Criteria .....	17
7. Conclusion .....	22
8. Photos .....	23
9. References .....	34
10. Image schedule .....	37

# 1. Purpose of Submission

This application seeks to amend the Queensland Heritage Register entry for Gowrie House (QHR 601307), including the mapped boundary extent and statement of cultural heritage significance, to clarify and fully recognise the contribution of the Betty Willis Wing (1991) to the cultural heritage significance of the place. The application contends that the Wing is an integral component of the continued development and use of Gowrie House as the headquarters of YWCA Queensland and as a hostel and community facility. Through its role in enabling the ongoing delivery of services central to the YWCA's mission, the Wing contributes to the historical, social and associative values already recognised in the existing Queensland Heritage Register entry.

The entire Gowrie House site, including Lot 5 on SP229169, is recognised as a local heritage place by Toowoomba Regional Council.<sup>1</sup> The current state heritage boundary incorporates the original Largo building, surviving front gardens, and a portion of the Betty Willis Wing that connects to Gowrie House. The partial exclusion of the Betty Willis Wing from the state heritage boundary is inconsistent with both the local heritage recognition and the existing Queensland Heritage Register entry, which identifies the role of subsequent additions in responding to changing accommodation needs and value to the community.

The Betty Willis Wing should be assessed in the context of Gowrie House as an evolving institutional place rather than as an isolated building. The relevant question is whether the Wing assists the place to demonstrate and understand the recognised heritage values of Gowrie House, including the evolution of accommodation, welfare functions, and YWCA operations over time.

Importantly, the current Queensland Heritage Register entry already recognises the role of later development in demonstrating the evolutionary significance of the place under Criterion A. The statement of significance notes that “the use of the building and subsequent additions reflects the changes in accommodation needs for females and value of the YWCA to the community”. Consistent with this, the historical description records the major expansion of Gowrie House in the late 1980s and early 1990s, which increased accommodation capacity to 42 residents and provided additional ablution, laundry, kitchen, dining, activity and wheelchair-accessible facilities. The entry also identifies fundraising, donations and a grant under the State Government Housing Accommodation Assistance Scheme (HAAS) as enabling these works.<sup>2</sup>

---

<sup>1</sup> Toowoomba Regional Council, *Planning Scheme v27.0*, Schedule 6, p. 67.

<sup>2</sup> Queensland Heritage Register, Entry QHR 601307 – Gowrie House, Toowoomba (2000). Available at: <https://apps.des.qld.gov.au/heritage-register/detail/?id=601307> (accessed 30 May 2026)

Queensland Cabinet Minutes dated 16 January 1989 identify the YWCA Toowoomba project by name as one of the projects selected for funding in the founding year of the HAAS program, receiving assistance to construct and modify buildings for ten young physically handicapped persons.<sup>3</sup>

These functional changes described in the existing Queensland Heritage Register were principally realised through construction of the Betty Willis Wing, which materially increased accommodation capacity and expanded the accessibility, communal facilities and operational capability of Gowrie House.<sup>4</sup>

In this context, the partial exclusion of the Betty Willis Wing from the mapped heritage extent creates an inconsistency between the recognised significance of the place and the physical extent through which that significance is demonstrated. This results in an incomplete understanding of the evolution and continued operation of Gowrie House as a YWCA hostel, Queensland headquarters and welfare facility.

Without the Betty Willis Wing, important physical evidence necessary to understand and demonstrate the cultural heritage significance of Gowrie House would be diminished or obscured. The Wing contributes to the ability of the place to demonstrate significance under Criteria A, B and H by evidencing the continued evolution, rarity and institutional association already recognised in the Queensland Heritage Register entry.

- **Criterion A (Evolution or Pattern of Queensland's History):**

The Betty Willis Wing evidences the continued evolution of Gowrie House from a private residence to a YWCA hostel and, subsequently, an expanded accommodation and welfare facility responding to changing accommodation needs and social expectations in Queensland. The Wing demonstrates the late 20th century adaptation of the place through increased accommodation capacity, accessible facilities, expanded communal areas, and service infrastructure associated with changing models of accommodation and care. In this respect, the Wing forms part of the historical trajectory of the place already recognised in the Queensland Heritage Register entry, including the contribution of subsequent additions in responding to changing accommodation needs.

- **Criterion B (Rarity):**

Gowrie House is recognised as a rare surviving example of a YWCA hostel in Queensland and is understood to be the last remaining YWCA hostel site in the

---

<sup>3</sup> Queensland Cabinet Minutes, The Queensland Housing Commission: Housing Accommodation Assistance Scheme, Mr P.R. McKechnie, 16 January 1989, p 26.

<sup>4</sup> Toowoomba Chronicle, 17 May 1991, "YWCA opens accommodation wing at Gowrie House complex", p. 20.

state. Its rarity derives not only from the survival of the original building, but from the continued operation and evolution of the place as a YWCA accommodation complex. The Betty Willis Wing contributes to this rarity by evidencing the final major phase of expansion and adaptation of the YWCA hostel model in Queensland.

Historical evidence indicates that the Betty Willis Wing is a rare surviving example of purpose-built community-based disability accommodation developed under the inaugural funding program of Queensland's Housing Accommodation Assistance Scheme (HAAS). Approved during the Scheme's initial implementation phase and constructed in 1991 for young people with physical disabilities, the Wing demonstrates an early government-supported response to growing demand for community-based accommodation during the transition away from institutional models of care. Its rarity is enhanced by the survival of documentary evidence linking the place directly to the first HAAS program and by its continued physical and functional association with Gowrie House, recognised in the Queensland Heritage Register as the last operating YWCA hostel in Queensland. The Wing remains an integral component of that continuing use and is a well-documented and substantially intact example of an increasingly uncommon form of community-based disability accommodation associated with the YWCA's social welfare and accommodation services.

- **Criterion H (Special Association):**

The Betty Willis Wing is integral to demonstrating the continuing association between Gowrie House and the Young Women's Christian Association (YWCA), an organisation of recognised importance in Queensland's history. The Wing was constructed as part of the continued use of Gowrie House for women's accommodation and associated welfare functions and physically evidences the long-term occupation, adaptation and operation of the place by the YWCA. Its construction enabled expanded accommodation and service delivery during a period of organisational and societal change and contraction and contributed to the continued viability of Gowrie House as a major centre of YWCA operations. The Wing therefore assists in demonstrating the enduring institutional relationship between the YWCA and Gowrie House as an accommodation facility, welfare service and organisational base. Exclusion of the Wing from the heritage extent materially reduces the ability of the place to demonstrate this continuing association.

---

## 2. Existing listing

The existing Queensland Heritage Register entry for Gowrie House (QHR 601307) recognises cultural heritage significance in terms that encompass the Betty Willis Wing as part of the evolving Gowrie House complex.

Under Criterion A, the Register entry states:

*“... The use of the building **and subsequent additions** reflect the changes in accommodation needs for females and value of the YWCA to the community.”*

This statement is significant because it expressly recognises subsequent additions as part of the way the place demonstrates cultural heritage significance, recognising the evolution of Gowrie House through additions responding to changing accommodation needs and the continuing role of the YWCA over time.

The Betty Willis Wing represents the final and most substantial phase of this evolution. Constructed in 1991, it materially expanded the accommodation and welfare functions of Gowrie House through additional bedrooms, accessible facilities, communal areas and supporting service infrastructure. In functional and historical terms, it directly reflects the changing accommodation needs identified as significant in the Register entry.

The historical description in the Register entry records the substantial expansion of Gowrie House during the late 1980s and early 1990s, including growth to approximately 42 rooms, fundraising efforts, and funding through the Housing Accommodation Assistance Scheme (HAAS). A contemporary newspaper article confirms that construction of the Betty Willis Wing increased total accommodation capacity to 42 rooms and formed part of the same fundraising and government-supported expansion program. This evidence supports the conclusion that the Betty Willis Wing was an integrated and functional component of the operational Gowrie House complex during a major phase of growth and adaptation. The Wing therefore materially contributed to the accommodation and welfare functions recognised in the Queensland Heritage Register entry, including the place’s demonstrated response to changing accommodation needs and the continuing role of the YWCA in the community.

Accordingly, the Betty Willis Wing should be understood as falling within the significance framework already recognised by the Queensland Heritage Register, representing a substantial and integral phase in the continuing evolution of Gowrie House as a YWCA accommodation and welfare complex and materially contributing to the heritage values for which the place was entered. The recognised significance of Gowrie House cannot be fully understood through the original building in isolation, as the heritage values expressly encompass the place’s evolution, expanded

accommodation function, and continuing role in responding to changing community needs.

### 3. Summary of Significance

Gowrie House is the last remaining YWCA hostel in Queensland and represents a rare surviving example of a twentieth-century institutional model dedicated to women's accommodation, welfare, and advancement. The Betty Willis Wing is integral to the understanding of the place, contributing to its functional, historical, and social integrity and evidencing the continued evolution of YWCA services at Gowrie House.

Key points of significance include:

- Integral evidence of the continuity of use and institutional evolution of Gowrie House, demonstrating its transition from a traditional women's hostel to a broader accommodation and welfare service model, including its role as the headquarters of YWCA Toowoomba and later YWCA Queensland, and reflecting the consolidation of regional YWCA branches and the expansion of disability, housing, social and community services across Queensland between 1988 and 2018.
- The final phase of the site's operational evolution, representing the last major expansion of Gowrie House as an active YWCA accommodation facility, with the hostel function continuing until 2025.
- Physical evidence of a major phase of adaptation and expansion undertaken during the founding phase of the Housing Accommodation Assistance Scheme (HAAS), an early Queensland Government capital grant program established to expand community-based accommodation and later developed into the Community Housing Partnership Program, which also reflects late twentieth-century adaptation of the YWCA hostel model through the provision of accessible accommodation and facilities for people with disabilities in response to changing community needs and service expectations prior to the commencement of the 1992 Disability Services Act era.
- Evidence of changing approaches to accommodation and welfare provision in Queensland through a combination of state-supported community housing initiatives and substantial private philanthropic funding, including support from Clive Berghofer.

Excluding the Betty Willis Wing from the heritage mapping produces a fragmented and incomplete representation of the place by limiting the ability to understand:

- The scale and scope of YWCA operations undertaken at Gowrie House, demonstrated through its 42-room accommodation facility and associated spaces for community programs, training, and support services, which

collectively illustrate the expanded operational role of the place beyond its original hostel function.

- The transition of Gowrie House from hostel accommodation to the operational headquarters of the Toowoomba YWCA and later YWCA Queensland, demonstrating its evolving role in supporting the administration and coordination of YWCA services across Queensland, and its contribution to the consolidation of state-level organisational functions following the amalgamation of regional branches.
- The late twentieth-century expansion of disability accommodation and associated training programs in Queensland, demonstrated through government-supported initiatives such as the Housing Accommodation Assistance Scheme (HAAS) and their delivery through purpose-built community-based accommodation in partnership with voluntary organisations.
- The outcomes of sustained community fundraising efforts contributing to the development and ongoing operation of Gowrie House, reflecting the role of community and philanthropic support in enabling the expansion of YWCA accommodation, disability services, and associated training and support functions.

## 4. Historical Context

### 4.1 Establishment of the YWCA Toowoomba (1932–1945)

The Young Women's Christian Association (YWCA) was founded in England in the 1850s to provide accommodation, welfare, and social support for young women. The first Queensland branch was established in Rockhampton in 1888, followed by Brisbane in 1890.

A Toowoomba branch was established in 1932 through the initiative of Lady Groom, wife of local federal member Sir Littleton Groom, in response to a recognised need for safe accommodation and social support for young women in Toowoomba and the Darling Downs.

Hostel accommodation formed a core function of YWCA Toowoomba, providing supervised and affordable accommodation for women relocating for employment, education, or training. In addition to accommodation, the organisation provided welfare, recreational, and social support services aimed at promoting independence and community participation.

The YWCA hostel model contributed to:

- reducing risks associated with women relocating independently for work, education, or training at a time of limited accommodation options;

- supporting women’s education, independence, and social development; and
- influencing women’s welfare and social opportunities within Toowoomba and the Darling Downs.<sup>5</sup>

## 4.2 Expansion of the Hostel Complex (1945–1988)

During the Second World War, YWCA Toowoomba provided leave accommodation for servicewomen, reflecting the branch’s established role in supporting women living away from home.

In 1945, Toowoomba YWCA President Miss A.M. Wadley secured a loan, supported by a deposit of £50, to purchase *Largo*—a substantial brick residence located on the corner of Mary and Arthur Streets, East Toowoomba. The property was subsequently renamed *Gowrie House* in honour of Lady Gowrie, wife of the Australian Governor-General.

Gowrie House was officially opened as a hostel on 10 November 1945 for young working women, students, and servicewomen. Reporting on the opening<sup>6</sup> described the property as situated on approximately one acre of land with mature shady trees and intended to provide accommodation for women living away from home.

Demand for accommodation increased in the post-war decades. In the late 1950s, the Wadley Wing was constructed to respond to growing demand from country girls relocating to Toowoomba for secondary education. By approximately 1971, the Hofmann Wing was added to accommodate continued growth in hostel demand and expanded service provision.

In 1979, YWCA Toowoomba broadened its accommodation model to admit both men and women, including apprentices, reflecting changing community needs and organisational priorities.<sup>7</sup>

## 4.3 Construction and Context of the Betty Willis Wing (1988–1991)

The period from the 1970s to the late 1980s represented a time of transition for the Young Women’s Christian Association (YWCA) across Australia. Changing social expectations, declining membership, financial pressures, and ageing facilities challenged the traditional YWCA model of supervised accommodation, welfare, and structured social programs. As women gained greater access to education,

---

<sup>5</sup> Queensland Heritage Register, Entry QHR 601307 – Gowrie House, Toowoomba (2000). Available at: <https://apps.des.qld.gov.au/heritage-register/detail/?id=601307> (accessed 30 May 2026)

<sup>6</sup> Queensland Heritage Register, Entry QHR 601307 – Gowrie House, Toowoomba (2000). Available at: <https://apps.des.qld.gov.au/heritage-register/detail/?id=601307> (accessed 30 May 2026)

<sup>7</sup> Queensland Heritage Register, Entry QHR 601307 – Gowrie House, Toowoomba (2000). Available at: <https://apps.des.qld.gov.au/heritage-register/detail/?id=601307> (accessed 30 May 2026)

employment, and independent living arrangements, many YWCA branches adapted their service delivery to changing operational contexts.<sup>8</sup>

During this period, Betty Willis OAM held significant leadership roles within YWCA Toowoomba, serving as General Secretary (1967–1971) and President (1986–1991).<sup>9</sup>

In 1974, a fire damaged the YWCA Toowoomba branch premises, resulting in the relocation of operations to Gowrie House. While Gowrie House provided an interim base, its capacity and configuration limited its suitability for permanent co-location of YWCA functions. In subsequent years, YWCA activities were undertaken from a range of temporary and leased premises, including Laurel Bank Hall.<sup>10</sup>

Following her appointment as President in 1986, Willis initiated and led the development of a proposal to expand Gowrie House in response to emerging accommodation and accessibility needs, including provision for people with physical disabilities. Originally envisaged as a modest scheme incorporating several wheelchair-accessible rooms and suitably modified ablution facilities, the project evolved, through collaboration with architect Mal Just, into the construction of an entirely new wing.<sup>11</sup>

The significance of the Betty Willis Wing's development is illuminated by the 1988 YWCA Toowoomba Presidents Report<sup>12</sup>, which records a period of significant organisational strain. Operational and financial pressures affecting the existing service delivery model—including concerns regarding financial viability, increasing complexity of resident needs, and the impending expiry of the Laurel Bank Hall lease—indicated that the model was no longer sustainable in its existing form. These conditions prompted a strategic reassessment of accommodation and service delivery arrangements, including consideration of leasing Gowrie House. However, through subsequent housing workshops and consultation with community workers, an opportunity was identified to address unmet housing needs for semi-independent young people with physical disabilities. This identified service gap aligned with emerging government priorities for community-based disability housing and formed the basis of a successful pilot submission to the Queensland Housing Commission under

---

<sup>8</sup> Gillespie, A. (1996). *Widening Horizons: The YWCA in Queensland 1888–1988*, MA Thesis, University of Queensland, p. 260.

<sup>9</sup> Willis, B. (2007). *Another Turn in the Road: Memoirs of Betty Willis O.A.M.*, Community Books Australia, Darling Heights, QLD, p. 129.

<sup>10</sup> Gillespie, A. (1996). *Widening Horizons: The YWCA in Queensland 1888–1988*, MA Thesis, University of Queensland, p. 275-276.

<sup>11</sup> Willis, B. (2007). *Another Turn in the Road: Memoirs of Betty Willis O.A.M.*, Community Books Australia, Darling Heights, QLD, p. 129.

<sup>12</sup> YWCA Toowoomba, *President's Report 1988*, p. 1–2.

the inaugural tranche of the Housing Accommodation Assistance Scheme (HAAS), representing one of the early implementations of a new state-level community housing program.<sup>13</sup>

Betty writes:

*“Meeting with community workers showed there were many needs for specialised housing, yet most were not compatible with what we are doing, nor manageable without specialist staff. Eventually, through housing workshops and discussions it seemed that meeting housing needs of semi-independent young people with physical disabilities could be incorporated into our present structure. So, encouraged and advised by Malcolm Just and with the practical support of Rob Fiedler who prepared plans in the midst of the Christmas rush, a submission for funding was lodged with the Queensland Housing Commission – and approved!”*

The initial grant of \$270,000 — conditional on the YWCA providing \$30,000 — was intended for new building works and modifications to accommodate ten young people with physical disabilities and enable their participation in YWCA programs.<sup>14</sup> Through collaboration with architect Mal Just, the project evolved into the construction of the 15-bedroom Betty Willis Wing<sup>15</sup>, substantially increasing in scope and reaching a total cost of approximately \$540,000. The Queensland Government ultimately contributed approximately \$371,000, reflecting the expanded scale and significance of the development, which transformed the organisation’s financial and operational position.<sup>16</sup>

#### 4.4 Housing Accommodation Assistance Scheme (HAAS) Funding Context

The YWCA Toowoomba submission for development of the Betty Willis Wing was prepared and lodged with the Queensland Housing Commission as a pilot program in late 1988<sup>17</sup> and approved during the initial implementation phase of the Queensland

---

<sup>13</sup> Willis, B. (2007). *Another Turn in the Road: Memoirs of Betty Willis O.A.M.*, Community Books Australia, Darling Heights, QLD, p. 129.

<sup>14</sup> YWCA Toowoomba, *President’s Report 1988*, p. 2.

<sup>15</sup> Willis, B. (2007). *Another Turn in the Road: Memoirs of Betty Willis O.A.M.*, Community Books Australia, Darling Heights, QLD, p. 129.

<sup>16</sup> Toowoomba Chronicle, 17 May 1991, “YWCA opens accommodation wing at Gowrie House complex”, p. 20.

<sup>17</sup> Willis, B. (2007). *Another Turn in the Road: Memoirs of Betty Willis O.A.M.*, Community Books Australia, Darling Heights, QLD, p. 129.

Government's Housing Accommodation Assistance Scheme (HAAS).<sup>18</sup> Cabinet records dated January 1989 identify funding approval for the project, described as the construction and modification of accommodation for "10 young physically handicapped" persons at YWCA Toowoomba. The proposal was selected as part of the inaugural \$25m funding round<sup>19</sup> from 206 206 applications totalling \$98 million.<sup>20</sup> The project therefore formed part of the initial implementation of the Housing Accommodation Assistance Scheme (HAAS), a joint government-community housing initiative later renamed the Community Housing Partnership Program.<sup>21</sup>

The HAAS program operated as a joint-venture funding mechanism between the Queensland Government, local authorities, and non-profit community organisations to support the provision of long-term accommodation for aged persons, single people, and people with disabilities. Funding arrangements generally required participating organisations to provide land and a 10% financial contribution, supplemented in many cases by community fundraising and local support initiatives.<sup>22</sup>

Funding for the Betty Willis Wing was thereby supplemented by local fundraising efforts, including contributions from the Toowoomba South Rotary Club.<sup>23</sup> The project expanded Gowrie House's accommodation capacity and introduced purpose-built disability-accessible accommodation, reflecting contemporary policy objectives supporting greater independence and community-based living for people with disabilities.

The 1988 Housing Commission and 1989–1991 Queensland Department of Housing and Local Government Annual Reports indicate that, during this period, the Department was actively developing and implementing joint venture approaches to housing

---

<sup>18</sup> Queensland Housing Commission. (1989). Annual Report 1988–89. Specific Assistance Objectives and Highlights. P. 20.

<sup>19</sup> Queensland Cabinet Minutes, The Queensland Housing Commission: Housing Accommodation Assistance Scheme, Mr P.R. McKechnie, 16 January 1989, p 26.

<sup>20</sup> Research Service, *Research Brief: Housing Accommodation Assistance Scheme – YWCA Toowoomba – 1988–92*, 27 May 2026, p. 4.

<sup>21</sup> Queensland Department of Housing and Local Government. (1991). Annual Report 1990–91. Specific Assistance Program highlights: 'Expansion of funding under the Housing Accommodation Assistance Scheme (renamed the Community Housing Partnership at the end of the year following a review).' P. 22.

<sup>22</sup> Queensland Department of Housing and Local Government. (1990). Annual Report 1989–90. Brisbane: Queensland Government. Specific Assistance Program highlights: 'Introduced joint ventures with community groups and local governments.' P. 26-28.

<sup>23</sup> Willis, B. (2007). *Another Turn in the Road: Memoirs of Betty Willis O.A.M.*, Community Books Australia, Darling Heights, QLD, p. 129.

provision in partnership with community organisations and local government.<sup>24</sup> This reflects a broader policy shift towards collaborative delivery models in the provision of housing assistance for vulnerable cohorts, including people with disabilities and low-income households.

Contemporary reporting confirms that the Betty Willis Wing was delivered under HAAS, with the Queensland Government contributing approximately \$371,000 of the total project cost of approximately \$540,000<sup>25</sup>. The YWCA provided the land and a minimum 10 per cent financial contribution, supplemented by community fundraising, including approximately \$25,000 from the Toowoomba South Rotary Club<sup>26</sup>.

The YWCA Toowoomba branch undertook targeted fundraising to support the development of housing for young people with disabilities, including the Betty Willis Wing. Donors were able to contribute at a range of levels, with recognition provided through a structured acknowledgement system. Contributions of \$5 were recognised through buying a brick, \$100 donations were recorded on a donor board, and \$500 gifts were acknowledged on an honour board. Larger contributions included \$1,000 towards the furnishing of a bedroom and \$5,000 to sponsor a bedroom.<sup>27</sup> Notable support was provided by the Mayor of Toowoomba, Clive Berghofer, reflecting civic and philanthropic involvement in the development of Gowrie House.<sup>28</sup> The donor board unveiled by the Deputy Premier was fixed next to the internal doorway linking the original Gowrie House to the Betty Willis Wing.<sup>29</sup>

As one of the first submissions funded under the HAAS program, the Deputy Premier and Minister for Local Government and Housing Tom Burns emphasised the underlying policy principle of the program at the official opening, stating:

“Voluntary community groups should be involved in providing special housing needs, as the Government could provide only the ‘bricks and mortar’”.<sup>30</sup>

---

<sup>24</sup> Queensland Cabinet Minutes, The Queensland Housing Commission: Housing Accommodation Assistance Scheme, Mr P.R. McKechnie, 16 January 1989, p 26.

<sup>25</sup> Toowoomba Chronicle, 17 May 1991, “YWCA opens accommodation wing at Gowrie House complex”, p. 20.

<sup>26</sup> Toowoomba Chronicle, 20 May 1991, “Disabled Hostel Officially Opened”, p. 3.

<sup>27</sup> State Library of Queensland, *Souvenir Program: Official Opening of the Betty Willis Wing*.

<sup>28</sup> Toowoomba Chronicle, 18 August 1990, “YWCA building gets \$5000 boost”.

<sup>29</sup> Urbis, *Heritage Addendum Report*, June 2025, p. 100.

<sup>30</sup> Toowoomba Chronicle, 20 May 1991, “Disabled Hostel Officially Opened”, p. 3.

This statement reflects the operational intent of the HAAS framework as a partnership model in which government capital funding enabled, but did not replace, community-based delivery and management of housing services.

Accordingly, the Betty Willis Wing is properly understood as an early and substantial example of a HAAS-supported community housing development delivered through a structured government–community joint venture model.

#### 4.5 Construction and Opening of the Betty Willis Wing (1990–1991)

Construction of the wing commenced in July 1990. The completed wing provided a total of 15-bedrooms, including five wheelchair-accessible rooms on the ground floor and nine rooms on the upper level, along with communal kitchen, dining, lounge, laundry.<sup>31</sup>

The project was officially opened on 18 May 1991 by Deputy Premier and Minister for Housing Tom Burns. Approximately 300 people attended, including national and state YWCA representatives and local dignitaries.<sup>32</sup>

The wing was named the Betty Willis Wing in recognition of Willis’s leadership role in its development. A commemorative plaque recorded: “She dreamed and she achieved.”<sup>33</sup>

The design incorporated complementary materials and finishes intended to maintain visual cohesion with Gowrie House. Architect Mal Just designed the building, with construction undertaken by T.M. & M. Mitchell Builders.<sup>34</sup>

#### 4.6 Operational and Historical Significance of the Betty Willis Wing

The Betty Willis Wing enabled the consolidation of YWCA Toowoomba’s operations at Gowrie House and significantly expanded the site’s accommodation capacity and service delivery capability. Constructed in 1991 to provide accessible accommodation for people with disabilities and increased residential capacity, the Wing materially expanded the functional capability of the place and enabled the diversification of services beyond the site’s earlier hostel-based role.<sup>35</sup> Since its construction, it has continued to support the ongoing operation of the YWCA at Gowrie House, contributing

---

<sup>31</sup> Toowoomba Chronicle, 17 May 1991, “YWCA opens accommodation wing at Gowrie House complex”, p. 20.

<sup>32</sup> Toowoomba Chronicle, 20 May 1991, “Disabled Hostel Officially Opened”, p. 3.

<sup>33</sup> Willis, B. (2007). *Another Turn in the Road: Memoirs of Betty Willis O.A.M.*, Community Books Australia, Darling Heights, QLD, p. 130.

<sup>34</sup> Toowoomba Chronicle, 17 May 1991, “YWCA opens accommodation wing at Gowrie House complex”, p. 20.

<sup>35</sup> Toowoomba Chronicle, 17 May 1991, “YWCA opens accommodation wing at Gowrie House complex”, p. 20.

to sustained levels of service delivery and operational activity not previously achievable within the original building configuration.

Parliamentary records further demonstrate the scale and continuity of YWCA Toowoomba's activities during the period since construction. In 2002, the Member for Toowoomba North noted in the Queensland Parliament that YWCA Toowoomba programs delivered more than 4,900 program hours and supported 242 young people in the preceding year.<sup>36</sup> In 2005, Members of the Legislative Assembly recognised the Betty Willis Wings long-term delivery of accommodation services beyond its original Housing Accommodation Assistance Scheme obligations, observing that it had “well and truly repaid” its commitments through sustained community service.<sup>37</sup>

Archival records of the Young Women's Christian Association of Queensland, held by the State Library of Queensland, demonstrate the continuity and scale of YWCA activity across Queensland throughout the twentieth century and confirm that local branches, including Toowoomba, formed part of an interconnected statewide network that evolved in response to changing social, financial, and operational conditions.<sup>38</sup>

During the late twentieth and early twenty-first centuries, the Toowoomba branch emerged as the most operationally active YWCA in Queensland. While other Queensland branches experienced declining membership, reduced program delivery, or organisational and financial pressures, the Toowoomba branch maintained a broader service offering, scale of operations, larger staffing base, and stronger institutional presence unmatched by other Queensland YWCAs.

These circumstances contributed to the amalgamation of Queensland YWCAs in 2011 and the establishment of YWCA Queensland as a consolidated state-wide organisation where the Gowrie House complex assumed an important operational role within YWCA Queensland as its headquarters. This reflected the continuing strength and service capacity of the Toowoomba branch. In this context, the Betty Willis Wing was not merely a later addition to the place, but an important enabling component in the continued viability and broader organisational role of Gowrie House within the history of YWCA Queensland.<sup>39</sup>

The continuing relevance of the organisation is further demonstrated by YWCA Queensland's recognition in the 2018 Queensland Training Awards (Darling Downs

---

<sup>36</sup> Queensland Legislative Assembly, Hansard, 9 May 2002 (Mr Shine, Member for Toowoomba North).

<sup>37</sup> Queensland Legislative Assembly, Hansard, 9 June 2005 (Mr Horan, Member for Toowoomba South).

<sup>38</sup> *YWCA of Queensland (1924–2004), Young Women's Christian Association of Queensland Records*, Collection 7821, John Oxley Library, State Library of Queensland, Brisbane.

<sup>39</sup> Wiltshire, K., Malhotra, A., Axelsen, M. (2018). *Leadership in Practice: YWCA Queensland*, Routledge, pp. 116–121

South West Regional Final), where the organisation received the Community Training Initiative of the Year award for its “Giving a Hand” program delivered in Toowoomba under the Skilling Queenslanders for Work initiative. This recognition reinforces the continuing role of Gowrie House and the Betty Willis Building as a place of community support, training, and service delivery.<sup>40</sup>

Collectively, these records demonstrate the sustained operational contribution of the YWCA from Gowrie House and the important role of the Betty Willis Wing in enabling the continued evolution, expansion, and institutional continuity of the place after 1991.

## 5. Physical description

Constructed in 1991 and named in honour of YWCA Toowoomba President Betty Willis, the Betty Willis Wing is a two-storey accommodation and community services extension connected to the rear of Gowrie House. The building was designed to expand the operational capacity of the YWCA Toowoomba hostel and support broader community and accommodation functions.

The wing was designed using complementary materials, finishes, roof forms, and colour treatments intended to harmonise with the original Gowrie House and maintain the visual cohesion of the site. Subsequent additions, including the Wadley–Hofmann unit block, similarly adopted materials and forms intended to complement the broader character of the place.

The Betty Willis Wing incorporates physical evidence of its funding and construction model through donor recognition features associated with its development under the Housing Accommodation Assistance Scheme (HAAS). These include “buy a brick” contributions and donor boards recognising graduated levels of community funding, with higher-level donations linked to specific building outcomes such as bedroom provision and furnishing. This structured fundraising model formed part of the delivery mechanism for early HAAS-supported community-based disability accommodation in Queensland. A donor board, unveiled by the Deputy Premier, is located adjacent to the internal connection between Gowrie House and the Betty Willis Wing, physically embedding the funding process within the building’s fabric and layout.

The Betty Willis Wing comprises the following accommodation and facilities:

### Upper Floor

- nine bedrooms
- communal bathroom and kitchen facilities.

---

<sup>40</sup> Media Statement 04-08-2018 No 85227. Queensland Government Media Statements. <https://statements.qld.gov.au/statements/85227> (accessed 30 May 2026)

## Ground Floor

- five disabled bedrooms providing rooming accommodation
- communal bathroom, laundry, and kitchen facilities
- community room
- shared common area.

The wing incorporates landscaped internal courts separating communal and accommodation areas. These spaces provide natural light, ventilation, and visual access to outdoor areas, improving amenity for residents and supporting the transition from more traditional institutional accommodation models toward increasingly independent and community-oriented living arrangements.

The physical layout and functional arrangement of the Betty Willis Wing demonstrate the adaptation of the earlier YWCA hostel model to late twentieth-century accommodation standards, including accessible accommodation and shared community facilities. The wing also evidences the continued operation and evolution of Gowrie House as a women-focused accommodation and support service into the late twentieth century.

## 6. Assessment Against Heritage Criteria

The evidence indicates that the Betty Willis Wing makes a substantial contribution to the cultural heritage significance of Gowrie House. The wing forms part of the physical, functional, and historical evolution of the site and provides important evidence of the continued operation, adaptation, and survival of the YWCA at Gowrie House during the late twentieth and early twenty-first centuries.

<b>Criterion</b>	<b>Assessment</b>
<i>Criterion A – Evolution or Pattern of Queensland’s History</i>	<p><b>Statement of significance:</b></p> <p>Acquired by the Young Women’s Christian Association (YWCA) in 1945, Gowrie House is important in demonstrating the evolution of women’s accommodation, welfare, and community support services in Queensland. The place provided secure accommodation for young women working and studying in Toowoomba and, through subsequent additions and adaptation, reflects changing social conditions and the continuing role of the YWCA in responding to community need.</p> <p>The Betty Willis Wing materially contributes to this significance as the final major phase in the development of Gowrie House.</p>

Constructed in response to identified accommodation and accessibility needs, including provision for semi-independent young people with disabilities, it demonstrates the adaptation of YWCA services in the late twentieth century beyond the traditional supervised hostel model.

Together, Gowrie House and its additions demonstrate the continuity and evolution of YWCA accommodation services in Queensland.

**Analysis:**

Gowrie House, acquired by the Young Women's Christian Association (YWCA) in 1945, is important in demonstrating the evolution of women's accommodation, welfare, and community support services in Queensland. The place initially provided secure accommodation for young women working and studying in Toowoomba and, through successive adaptation and extension, reflects the changing social, policy, and operational conditions influencing the delivery of supported accommodation services over time.

The Betty Willis Wing, constructed in 1991, represents a significant later phase in this evolution. Delivered under the Housing Accommodation Assistance Scheme (HAAS), an early Queensland Government community housing initiative, the Wing provided accessible accommodation for people with disabilities and additional residential capacity. Queensland Cabinet Minutes dated 16 January 1989 confirm the project was selected in the inaugural HAAS funding round, placing it within the earliest phase of implementation of a new state-supported community housing program. The Queensland Heritage Register entry for the place records approximately 42 rooms as an outcome of the site's historical expansion, a figure that corresponds to the accommodation capacity achieved through construction of the Betty Willis Wing and confirms the Wing's material contribution to the accommodation function identified as significant in the existing listing. Together, these records demonstrate the transition of Gowrie House beyond its original supervised hostel function toward a more diversified model of supported accommodation responsive to emerging Queensland housing policy and disability inclusion objectives.

Operational evidence further demonstrates the role of the YWCA Toowoomba branch during this period. Parliamentary records note that in 2002 the organisation delivered more than 4,900 program hours and supported 242 young people in a single year, and in 2005 its long-term contribution to accommodation services was

formally recognised in the Queensland Legislative Assembly. These records confirm the sustained scale and continuity of service delivery from Gowrie House into the early twenty-first century.

Archival records held by the State Library of Queensland confirm that YWCA branches across the state formed part of an interconnected organisational network that adapted in response to changing social conditions, funding arrangements, and service delivery models. Within this broader context, the Toowoomba branch maintained a comparatively strong and sustained operational presence during a period in which other branches experienced contraction or reduced program delivery.

Following its construction, the Betty Willis Wing contributed to the continued functional capacity of Gowrie House by enabling expanded accommodation, including provision for people with disabilities, and supporting diversified housing, training, and community programs. This reinforced the role of the place as an active service delivery centre during a period of broader organisational and structural change within the YWCA network in Queensland, culminating in the 2011 amalgamation of YWCA branches into YWCA Queensland. The Gowrie House complex subsequently served as an important operational centre within the merged YWCA Queensland structure, reflecting the continued strength of the Toowoomba branch's service infrastructure during this period.

In contemporary terms, the continuing role of the organisation is demonstrated by YWCA Queensland's receipt of the 2018 Queensland Training Awards (Darling Downs South West Regional Final) for its "Giving a Hand" program delivered in Toowoomba under the Skilling Queenslanders for Work initiative, confirming the ongoing association of the place with training and community support functions.

Collectively, Gowrie House demonstrates the historical evolution of YWCA accommodation and welfare services in Queensland from mid-twentieth-century hostel accommodation to diversified, policy-linked supported housing and community service delivery. The Betty Willis Wing is integral to this significance as the physical embodiment of the transition in service model, enabling the continued operation and adaptation of the place within changing state housing and welfare frameworks.

The original Gowrie House building can demonstrate the establishment of the YWCA hostel model in Queensland, however, it cannot demonstrate its evolution. Without the Betty

	<p>Willis Wing, the place is reduced to an incomplete and static representation of YWCA accommodation history rather than a demonstrable example of its historical development over time.</p>
<p><i>Criterion B – Rarity</i></p>	<p><b>Statement of significance:</b></p> <p>Gowrie House is recognised in the Queensland Heritage Register as the only YWCA-owned hostel still operating in Queensland, representing a rare surviving example of a purpose-developed women’s accommodation and welfare institution. The listing further recognises that both the original building and subsequent additions collectively demonstrate changing accommodation needs for women and the ongoing role of the YWCA in the community. The Betty Willis Wing is a substantial later addition that forms part of the accommodation infrastructure through which this rare surviving hostel function continues to be expressed.</p> <p><b>Analysis:</b></p> <p>The existing Queensland Heritage Register entry establishes the rarity of Gowrie House as the only surviving YWCA-owned hostel in Queensland. This rarity is associated with the continued operation of the place as a residential accommodation and welfare facility, rather than the survival of the 1945 building alone. The listing explicitly acknowledges that subsequent additions contribute to the expression of changing accommodation needs and the ongoing function of the place.</p> <p>The Betty Willis Wing, constructed in 1991, is a major later addition to the complex. It provided additional residential accommodation, including accessible accommodation for people with disabilities, and expanded the overall capacity of the hostel. In doing so, it forms part of the physical infrastructure that supports the continued operation of the place as a YWCA accommodation facility.</p> <p>Consistent with the existing listing, the Wing is physically and functionally integrated with the hostel complex and contributes to the built fabric through which the rare surviving hostel function is expressed. It demonstrates how the place adapted to changing accommodation requirements while maintaining its core role as a YWCA-operated residential facility.</p> <p>The Betty Willis Wing contributes to the rarity of Gowrie House as the only YWCA-owned hostel still operating in Queensland by forming part of the accommodation infrastructure through which that rare function is expressed. Exclusion of the Wing would</p>

	<p>reduce the completeness and integrity of the physical evidence of this rare institutional type by removing a substantial component of the later development that enables the continued operation and legibility of the hostel function.</p>
<p><i>Criterion H – Association with a Person or Organisation of Importance</i></p>	<p><b>Statement of significance:</b></p> <p>Gowrie House has a strong and continuing association with the Young Women’s Christian Association (YWCA), an organisation of historical importance in Queensland for its longstanding role in women’s accommodation, welfare, education, and social support. The place demonstrates the continuity of YWCA operations from 1945 through to the late twentieth and early twenty-first centuries.</p> <p>The Betty Willis Wing, constructed in 1991, forms part of this association by reflecting a later phase of YWCA adaptation and service delivery at Gowrie House. The wing is named in honour of Betty Willis and is associated with her leadership within YWCA Toowoomba during the period in which the extension was conceived and delivered.</p> <p>Together, the place and its later additions demonstrate the long-term association of Gowrie House with the YWCA and its key personnel during periods of organisational continuity and change.</p> <p><b>Analysis:</b></p> <p>Gowrie House has a strong and continuing association with the Young Women’s Christian Association (YWCA), an organisation of historical importance in Queensland for its longstanding role in women’s accommodation, welfare, education and social support services. The place demonstrates the continuity of YWCA activities at the site from 1945 and the evolution of those activities in response to changing community needs, organisational priorities and funding environments.</p> <p>The Betty Willis Wing, constructed in 1991, forms part of this continuing association. Developed during a period of organisational adaptation, the wing enabled the consolidation of YWCA Toowoomba operations at Gowrie House, expanded accommodation capacity, and supported the diversification of services beyond the site's earlier hostel-based role. As such, it reflects a significant later phase in the YWCA's occupation and use of the place.</p> <p>The wing is also associated with Betty Willis, who served in senior leadership roles within YWCA Toowoomba, including General</p>

	<p>Secretary and President. She was closely involved in the planning and delivery of the extension, which was subsequently named in her honour in recognition of her contribution to the organisation.</p> <p>The wing demonstrates:</p> <ul style="list-style-type: none"> <li>• the continuing association of Gowrie House with the YWCA through a later phase of accommodation, welfare and community service delivery</li> <li>• the ongoing adaptation of the place to support changing YWCA programs and operational requirements</li> <li>• the contribution of YWCA leadership, including Betty Willis, to the planning and development of the 1991 extension.</li> </ul> <p>While the original Gowrie House demonstrates the establishment of YWCA accommodation services, the Betty Willis Wing demonstrates the continuation and evolution of that association during the late twentieth century. Exclusion of the wing would diminish the ability of the place to illustrate the full extent of the YWCA's long-term occupation, service delivery and organisational development at Gowrie House.</p>
--	---

## 7. Conclusion

The evidence demonstrates that the Betty Willis Wing is a significant component of the cultural heritage significance of Gowrie House across multiple criteria.

Its listing ensures:

- Demonstration of the evolution of the YWCA accommodation and hostel model in Queensland (Criterion A)
- Retention of the rarity and integrity of a rare surviving multi-phase YWCA accommodation complex (Criterion B)
- Preservation of the final major phase in the development of a significant women's accommodation and welfare institution (Criterion A)
- Continuity of strong associative significance with the Young Women's Christian Association (Criterion H)
- Physical evidence of the continued operational continuity, adaptation, and diversification of YWCA services at the site (Criterion A / H)

Taken together, these factors demonstrate that the Betty Willis Wing is essential to the understanding and interpretation of Gowrie House as a continuously evolving YWCA accommodation and welfare institution in Queensland.

Exclusion of the Betty Willis Wing would result in a partial and incomplete interpretation of the site's cultural heritage values.

## 8. Photos



Figure 1: Existing Heritage boundary mapping<sup>41</sup>

---

<sup>41</sup> Queensland Government, *State Planning Policy Interactive Mapping System (SPP IMS) and Development Assessment Mapping System (DAMS)*, Environment and Heritage / Cultural Heritage layers. <https://sppims-dams.dsdilgp.qld.gov.au/spp/> (accessed 30 May 2026)

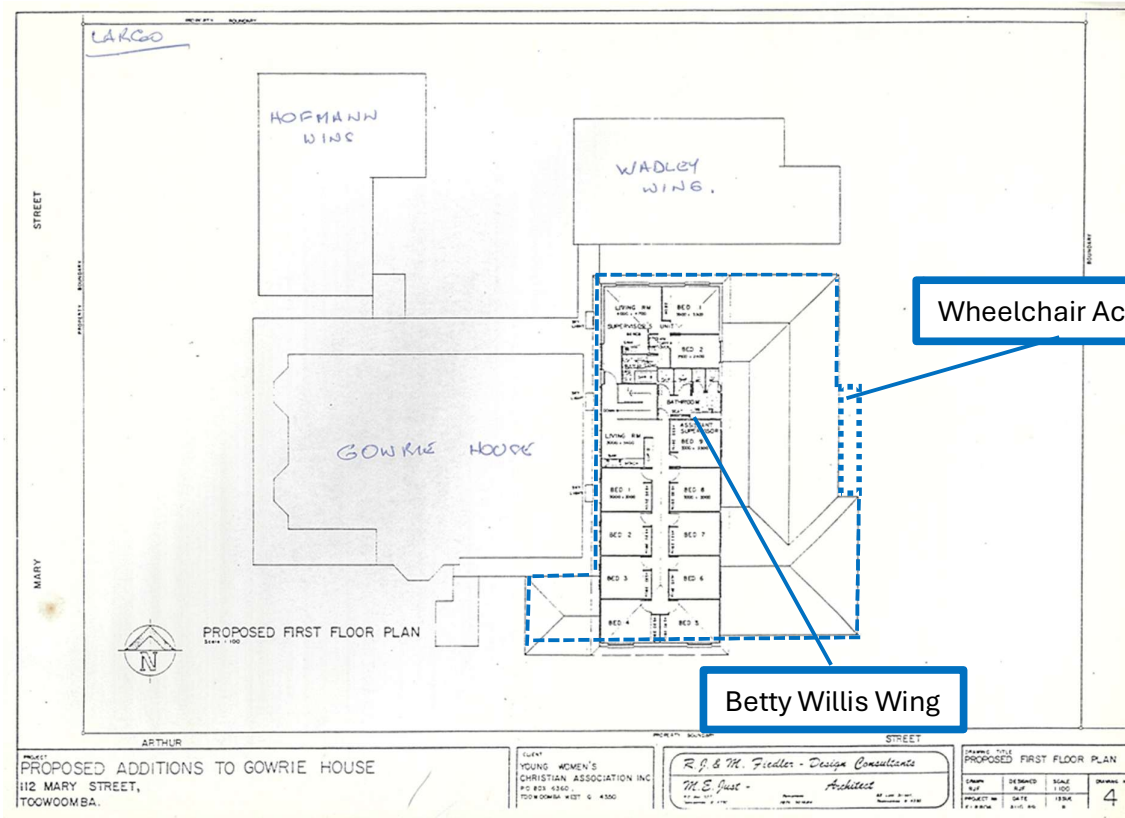


Figure 2: First floor architectural plan of the Betty Willis Wing with respect to Gowrie House, the Hofmann Wing and the Wadley Wing<sup>42</sup>

<sup>42</sup> State Library of Queensland, *Souvenir Program: Official Opening of the Betty Willis Wing.*

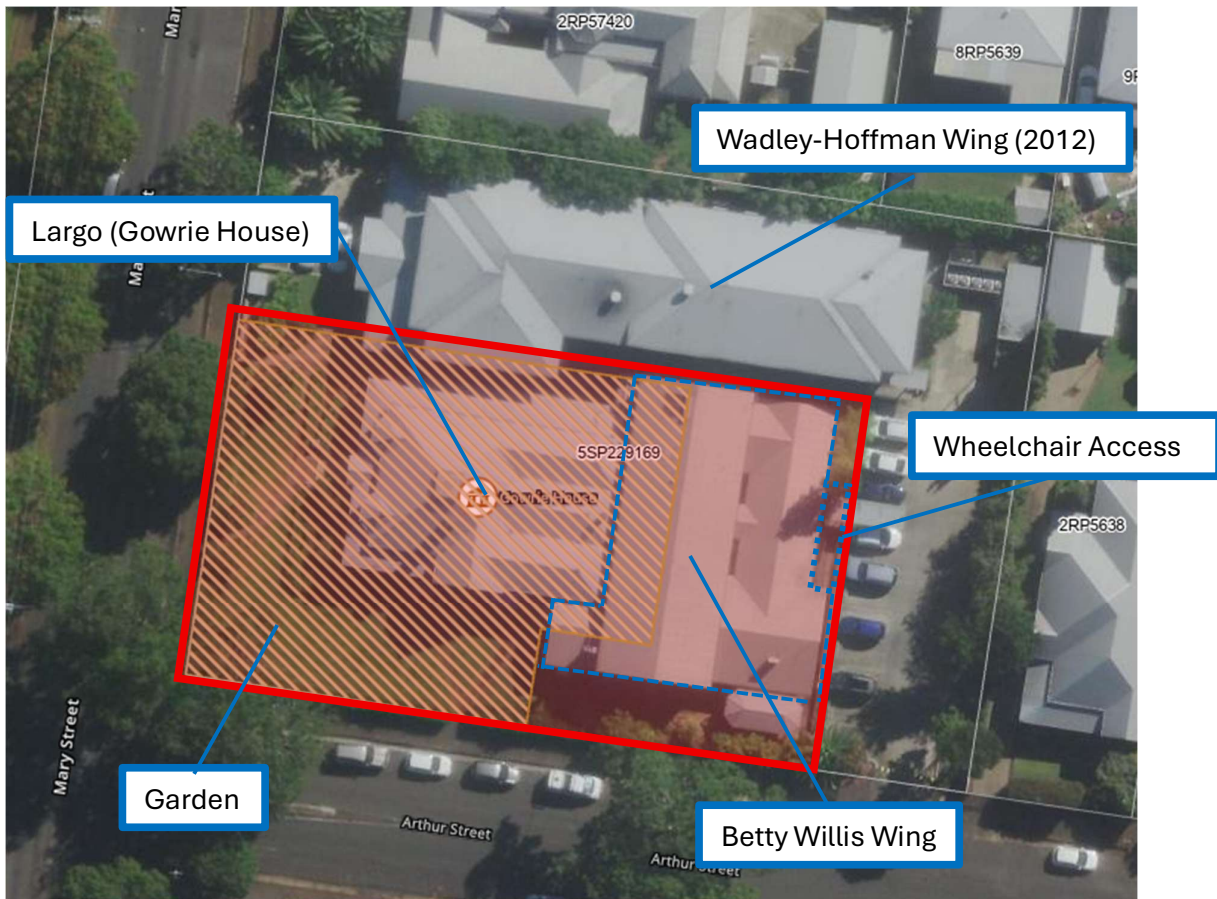


Figure 3: Proposed heritage boundary mapping to include the Betty Willis Wing<sup>43</sup>

<sup>43</sup> Queensland Government, *State Planning Policy Interactive Mapping System (SPP IMS) and Development Assessment Mapping System (DAMS)*, Environment and Heritage / Cultural Heritage layers. <https://sppims-dams.dsdilgp.qld.gov.au/spp/> (accessed 30 May 2026)

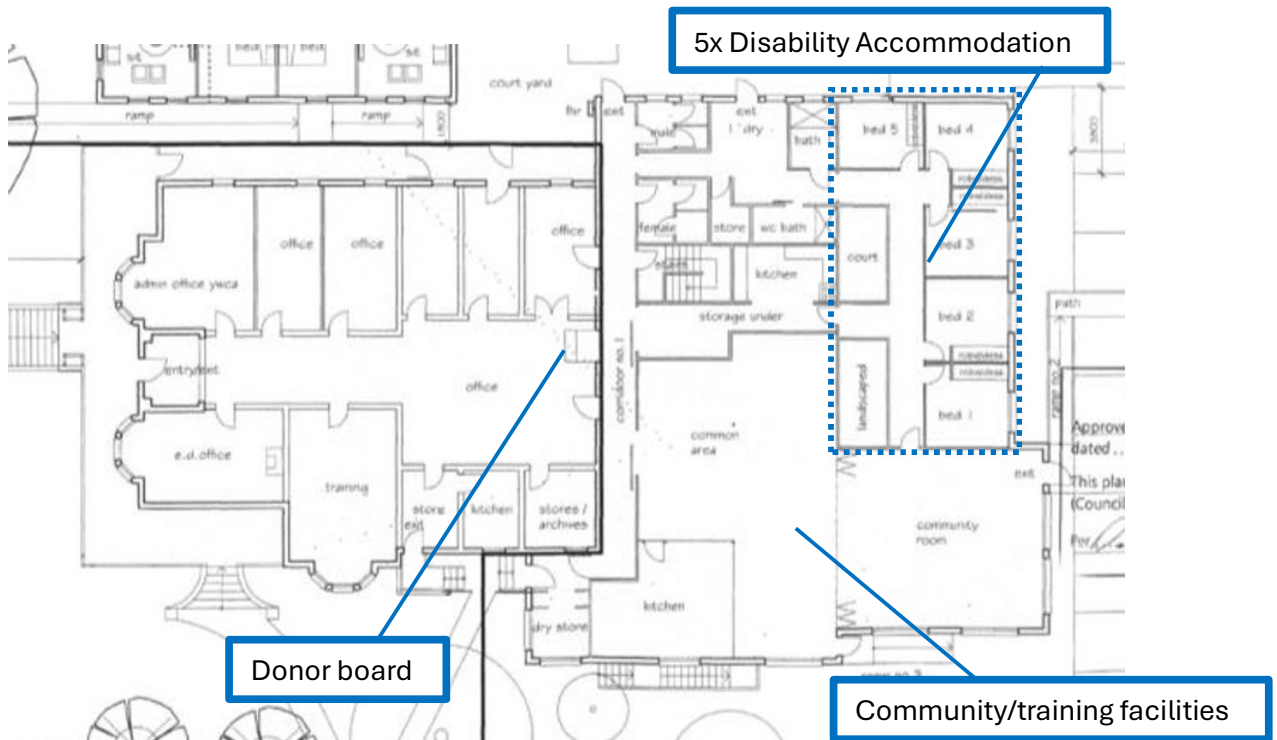
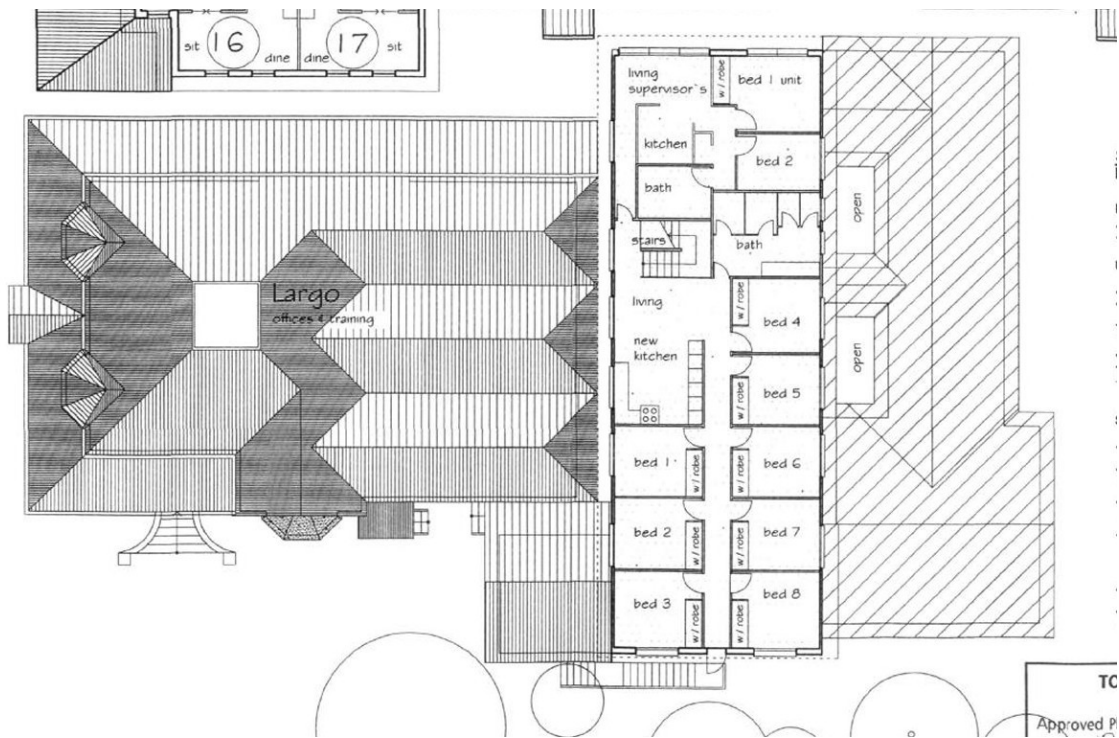


Figure 4: Ground floor layout<sup>44</sup>



<sup>44</sup> Attachment 8 – Ministerial Infrastructure Designation (MID) Planning Assessment Report, 112 Mary Street, East Toowoomba, August 2025, p. 9.

Figure 5: Level 1 layout<sup>45</sup>

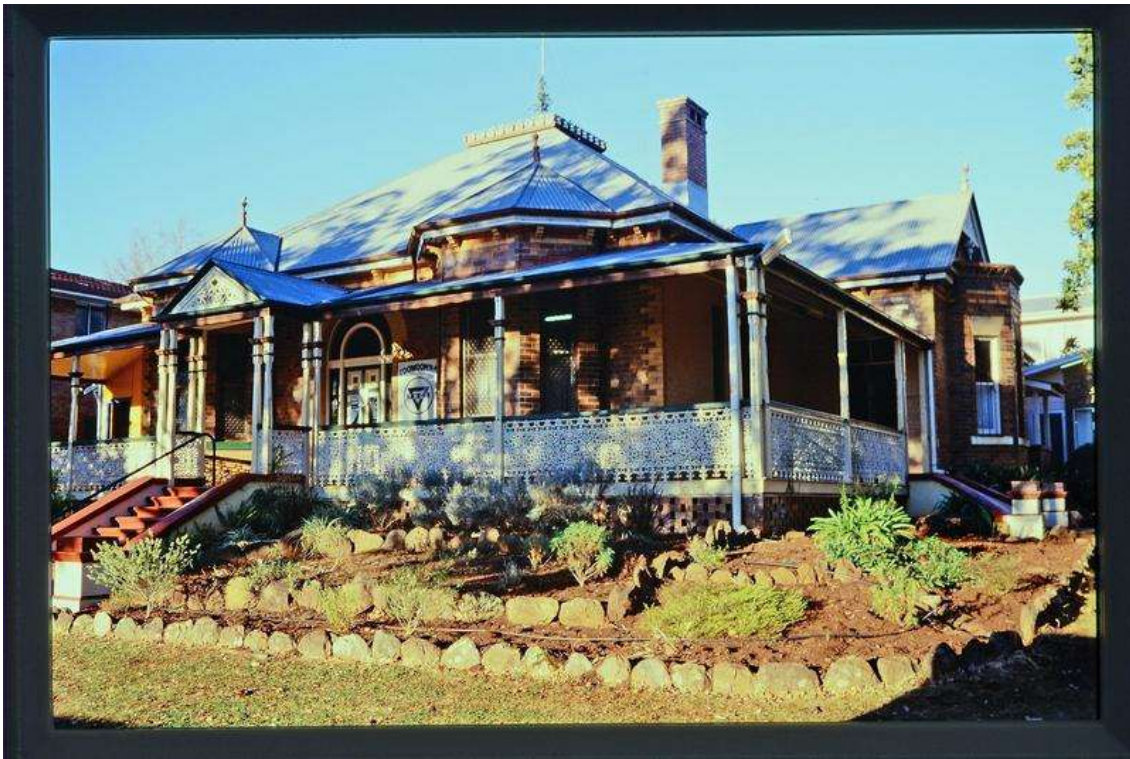


Figure 6: Gowrie House western aspect from Mary street, including the former 2-storey Hofmann Wing (left) and 2-storey Betty Willis Wing (rear-right)<sup>46</sup>

---

<sup>45</sup> Attachment 8 – Ministerial Infrastructure Designation (MID) Planning Assessment Report, 112 Mary Street, East Toowoomba, August 2025, p. 10.

<sup>46</sup> Queensland Heritage Register, Entry QHR 601307 – Gowrie House, Toowoomba (2000). Available at: <https://apps.des.qld.gov.au/heritage-register/detail/?id=601307> (accessed 30 May 2026)



Figure 7: Gowrie House eastern aspect from Arthur Street (showing the “Betty Willis Wing”)<sup>47</sup>

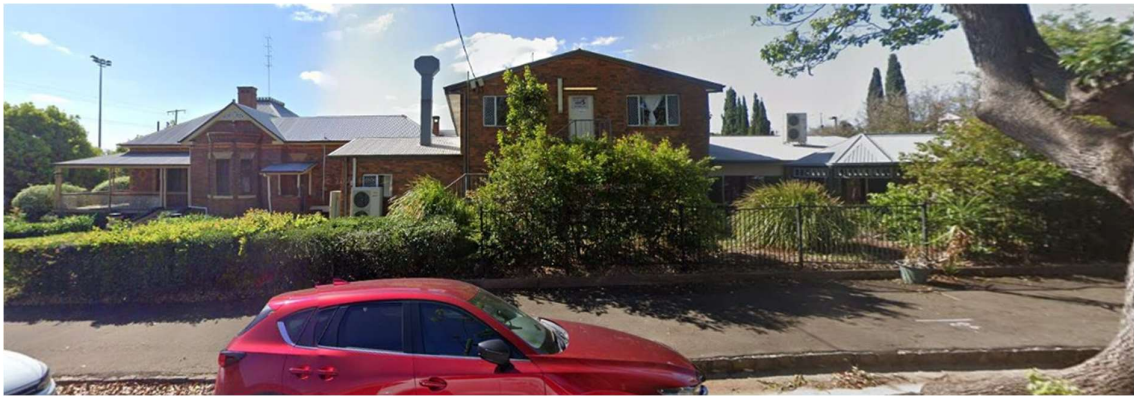
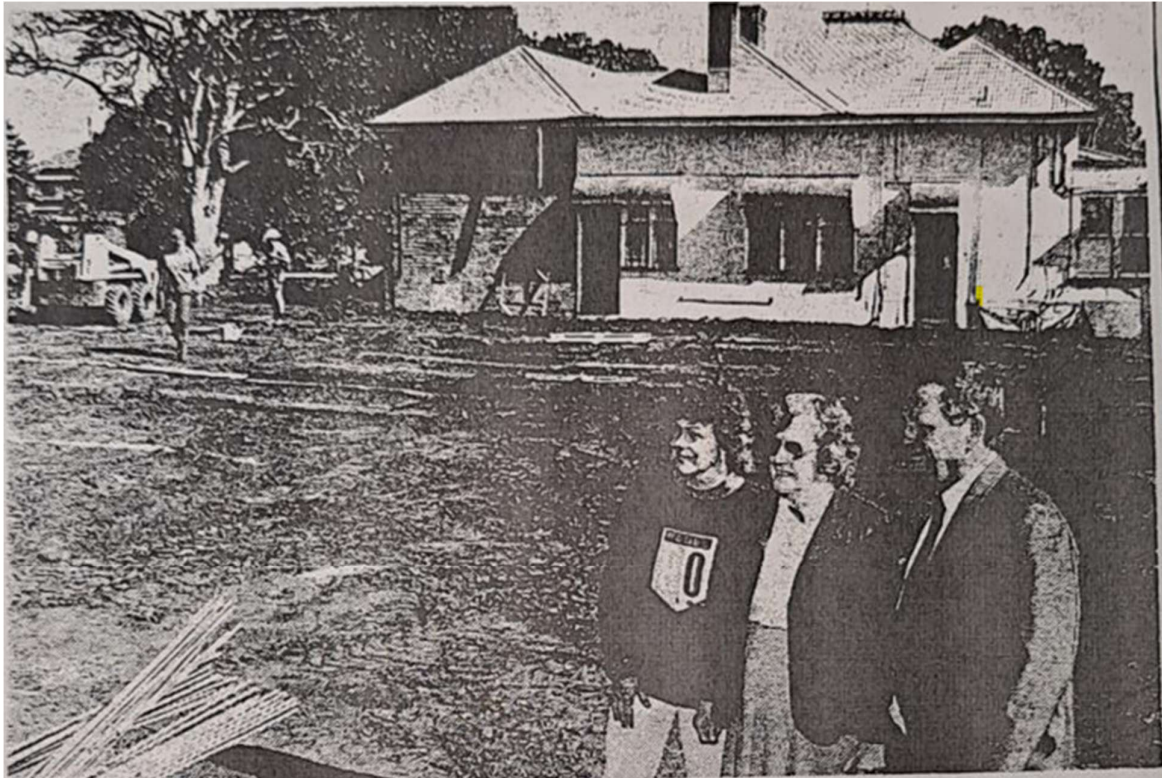


Figure 8: Gowrie House southerly aspect from Arthur Street (showing the “Betty Willis Wing”)<sup>48</sup>

---

<sup>47</sup> Google Street View, imagery dated 2024. (accessed 30 May 2026)

<sup>48</sup> Google Street View, imagery dated 2024. (accessed 30 May 2026)



Mayor Ald Clive Berghofer, MLA, YWCA president Miss Betty Willis (centre) and YWCA executive director Mrs Kerry Tomlinson inspect the building site of the residential extensions to Gowrie House.

*Figure 9: Construction of the Betty Willis Wing at the rear of Gowrie House<sup>49</sup>*

---

<sup>49</sup> Toowoomba Chronicle, 18 August 1990, "YWCA building gets \$5000 boost".



Figure 10: Betty Willis Wing donor board<sup>50</sup>

---

<sup>50</sup> Willis, B. (2007). *Another Turn in the Road: Memoirs of Betty Willis O.A.M.*, Community Books Australia, Darling Heights, QLD, p. 129.



Figure 11: Betty Willis Wing Donor board installed on the rear eastern wall of Gowrie House, next to the door leading into the Betty Willis Wing<sup>51</sup>

---

<sup>51</sup> Urbis, *Heritage Addendum Report*, June 2025, p. 100.



Figure 12: Betty Willis and Tom Burns at the opening of the Betty Willis Wing<sup>52</sup>

---

<sup>52</sup> Toowoomba Chronicle, 20 May 1991, "Disabled Hostel Officially Opened", p. 3.



Figure 13: Betty Willis Wing plaque<sup>53</sup>



Figure 14: Betty Willis Wing dining room<sup>54</sup>

<sup>53</sup> Willis, B. (2007). *Another Turn in the Road: Memoirs of Betty Willis O.A.M.*, Community Books Australia, Darling Heights, QLD, p. 130.

<sup>54</sup> Toowoomba Chronicle, 17 May 1991, "YWCA opens accommodation wing at Gowrie House complex", p. 20.

## 9. References

Footnote	Source
01	Toowoomba Regional Council, <i>Planning Scheme v27.0</i> , Schedule 6, p. 67.
02	Queensland Heritage Register, Entry QHR 601307 – Gowrie House, Toowoomba (2000). Available at: <a href="https://apps.des.qld.gov.au/heritage-register/detail/?id=601307">https://apps.des.qld.gov.au/heritage-register/detail/?id=601307</a> (accessed 30 May 2026)
03	Queensland Cabinet Minutes, The Queensland Housing Commission: Housing Accommodation Assistance Scheme, Mr P.R. McKechnie, 16 January 1989, p 26.
04	Toowoomba Chronicle, 17 May 1991, “YWCA opens accommodation wing at Gowrie House complex”, p. 20.
05	Queensland Heritage Register, Entry QHR 601307 – Gowrie House, Toowoomba (2000). Available at: <a href="https://apps.des.qld.gov.au/heritage-register/detail/?id=601307">https://apps.des.qld.gov.au/heritage-register/detail/?id=601307</a> (accessed 30 May 2026)
06	Queensland Heritage Register, Entry QHR 601307 – Gowrie House, Toowoomba (2000). Available at: <a href="https://apps.des.qld.gov.au/heritage-register/detail/?id=601307">https://apps.des.qld.gov.au/heritage-register/detail/?id=601307</a> (accessed 30 May 2026)
07	Queensland Heritage Register, Entry QHR 601307 – Gowrie House, Toowoomba (2000). Available at: <a href="https://apps.des.qld.gov.au/heritage-register/detail/?id=601307">https://apps.des.qld.gov.au/heritage-register/detail/?id=601307</a> (accessed 30 May 2026)
08	Gillespie, A. (1996). <i>Widening Horizons: The YWCA in Queensland 1888–1988</i> , MA Thesis, University of Queensland, p. 260.
09	Willis, B. (2007). <i>Another Turn in the Road: Memoirs of Betty Willis O.A.M.</i> , Community Books Australia, Darling Heights, QLD, p. 129.
10	Gillespie, A. (1996). <i>Widening Horizons: The YWCA in Queensland 1888–1988</i> , MA Thesis, University of Queensland, p. 275-276.
11	Willis, B. (2007). <i>Another Turn in the Road: Memoirs of Betty Willis O.A.M.</i> , Community Books Australia, Darling Heights, QLD, p. 129.
12	YWCA Toowoomba, <i>President’s Report 1988</i> , p. 1–2.
13	Willis, B. (2007). <i>Another Turn in the Road: Memoirs of Betty Willis O.A.M.</i> , Community Books Australia, Darling Heights, QLD, p. 129.
14	YWCA Toowoomba, <i>President’s Report 1988</i> , p. 2.
15	Willis, B. (2007). <i>Another Turn in the Road: Memoirs of Betty Willis O.A.M.</i> , Community Books Australia, Darling Heights, QLD, p. 129.
16	Toowoomba Chronicle, 17 May 1991, “YWCA opens accommodation wing at Gowrie House complex”, p. 20.
17	Willis, B. (2007). <i>Another Turn in the Road: Memoirs of Betty Willis O.A.M.</i> , Community Books Australia, Darling Heights, QLD, p. 129.

18	Queensland Housing Commission. (1989). Annual Report 1988–89. Specific Assistance Objectives and Highlights. P. 20.
19	Queensland Cabinet Minutes, The Queensland Housing Commission: Housing Accommodation Assistance Scheme, Mr P.R. McKechnie, 16 January 1989, p 26.
20	Research Service, <i>Research Brief: Housing Accommodation Assistance Scheme – YWCA Toowoomba – 1988–92</i> , 27 May 2026, p. 4.
21	Queensland Department of Housing and Local Government. (1991). Annual Report 1990–91. Specific Assistance Program highlights: ‘Expansion of funding under the Housing Accommodation Assistance Scheme (renamed the Community Housing Partnership at the end of the year following a review).’ P. 22.
22	Queensland Department of Housing and Local Government. (1990). Annual Report 1989–90. Brisbane: Queensland Government. Specific Assistance Program highlights: ‘Introduced joint ventures with community groups and local governments.’ P. 26-28.
23	Willis, B. (2007). <i>Another Turn in the Road: Memoirs of Betty Willis O.A.M.</i> , Community Books Australia, Darling Heights, QLD, p. 129.
24	Queensland Cabinet Minutes, The Queensland Housing Commission: Housing Accommodation Assistance Scheme, Mr P.R. McKechnie, 16 January 1989, p 26.
25	Toowoomba Chronicle, 17 May 1991, “YWCA opens accommodation wing at Gowrie House complex”, p. 20.
26	Toowoomba Chronicle, 20 May 1991, “Disabled Hostel Officially Opened”, p. 3.
27	State Library of Queensland, <i>Souvenir Program: Official Opening of the Betty Willis Wing</i> .
28	Toowoomba Chronicle, 18 August 1990, “YWCA building gets \$5000 boost”.
29	Urbis, <i>Heritage Addendum Report</i> , June 2025, p. 100.
30	Toowoomba Chronicle, 20 May 1991, “Disabled Hostel Officially Opened”, p. 3.
31	Toowoomba Chronicle, 17 May 1991, “YWCA opens accommodation wing at Gowrie House complex”, p. 20.
32	Toowoomba Chronicle, 20 May 1991, “Disabled Hostel Officially Opened”, p. 3.
33	Willis, B. (2007). <i>Another Turn in the Road: Memoirs of Betty Willis O.A.M.</i> , Community Books Australia, Darling Heights, QLD, p. 130.
34	Toowoomba Chronicle, 17 May 1991, “YWCA opens accommodation wing at Gowrie House complex”, p. 20.

35	Toowoomba Chronicle, 17 May 1991, “YWCA opens accommodation wing at Gowrie House complex”, p. 20.
36	Queensland Legislative Assembly, Hansard, 9 May 2002 (Mr Shine, Member for Toowoomba North).
37	Queensland Legislative Assembly, Hansard, 9 June 2005 (Mr Horan, Member for Toowoomba South).
38	<i>YWCA of Queensland (1924–2004), Young Women’s Christian Association of Queensland Records</i> , Collection 7821, John Oxley Library, State Library of Queensland, Brisbane.
39	Wiltshire, K., Malhotra, A., Axelsen, M. (2018). <i>Leadership in Practice: YWCA Queensland</i> , Routledge, pp. 116–121
40	Media Statement 04-08-2018 No 85227. Queensland Government Media Statements. <a href="https://statements.qld.gov.au/statements/85227">https://statements.qld.gov.au/statements/85227</a> (accessed 30 May 2026)
41	Queensland Government, <i>State Planning Policy Interactive Mapping System (SPP IMS) and Development Assessment Mapping System (DAMS)</i> , Environment and Heritage / Cultural Heritage layers. <a href="https://sppims-dams.dsdilgp.qld.gov.au/spp/">https://sppims-dams.dsdilgp.qld.gov.au/spp/</a> (accessed 30 May 2026)
42	State Library of Queensland, <i>Souvenir Program: Official Opening of the Betty Willis Wing</i> .
43	Queensland Government, <i>State Planning Policy Interactive Mapping System (SPP IMS) and Development Assessment Mapping System (DAMS)</i> , Environment and Heritage / Cultural Heritage layers. <a href="https://sppims-dams.dsdilgp.qld.gov.au/spp/">https://sppims-dams.dsdilgp.qld.gov.au/spp/</a> (accessed 30 May 2026)
44	Attachment 8 – Ministerial Infrastructure Designation (MID) Planning Assessment Report, 112 Mary Street, East Toowoomba, August 2025, p. 9.
45	Attachment 8 – Ministerial Infrastructure Designation (MID) Planning Assessment Report, 112 Mary Street, East Toowoomba, August 2025, p. 10.
46	Queensland Heritage Register, Entry QHR 601307 – Gowrie House, Toowoomba (2000). Available at: <a href="https://apps.des.qld.gov.au/heritage-register/detail/?id=601307">https://apps.des.qld.gov.au/heritage-register/detail/?id=601307</a> (accessed 30 May 2026)
47	<i>Google Street View</i> , imagery dated 2024. (accessed 30 May 2026)
48	<i>Google Street View</i> , imagery dated 2024. (accessed 30 May 2026)
49	Toowoomba Chronicle, 18 August 1990, “YWCA building gets \$5000 boost”.
50	Willis, B. (2007). <i>Another Turn in the Road: Memoirs of Betty Willis O.A.M.</i> , Community Books Australia, Darling Heights, QLD, p. 129.
51	Urbis, <i>Heritage Addendum Report</i> , June 2025, p. 100.
52	Toowoomba Chronicle, 20 May 1991, “Disabled Hostel Officially Opened”, p. 3.

53	Willis, B. (2007). <i>Another Turn in the Road: Memoirs of Betty Willis O.A.M.</i> , Community Books Australia, Darling Heights, QLD, p. 130.
54	Toowoomba Chronicle, 17 May 1991, “YWCA opens accommodation wing at Gowrie House complex”, p. 20.

## 10. Image schedule

Figure number	Description	Source/photographer	Date	Copyright
1	Existing Heritage boundary mapping	Queensland Government, <i>State Planning Policy Interactive Mapping System (SPP IMS) and Development Assessment Mapping System (DAMS)</i> , Environment and Heritage / Cultural Heritage layers. <a href="https://sppims-dams.dsdilgp.qld.gov.au/spp/">https://sppims-dams.dsdilgp.qld.gov.au/spp/</a> (accessed 30 May 2026)	May-26	© State of Queensland (Department of State Development, Infrastructure and Planning), Crown Copyright
2	First floor architectural plan of the Betty Willis Wing with respect to Gowrie House, the Hofmann Wing and the Wadley Wing	State Library of Queensland, <i>Souvenir Program: Official Opening of the Betty Willis Wing</i> .	1991 (reproduced May 2026)	Copyright status unknown – likely © original creator/publisher; reproduced from State Library of Queensland collection
3	Proposed heritage boundary mapping to include the Betty Willis Wing	Queensland Government, <i>State Planning Policy Interactive Mapping System (SPP IMS) and Development Assessment Mapping System (DAMS)</i> , Environment and Heritage / Cultural Heritage layers. <a href="https://sppims-dams.dsdilgp.qld.gov.au/spp/">https://sppims-dams.dsdilgp.qld.gov.au/spp/</a> (accessed 30 May 2026)	May-26	© State of Queensland (Department of State Development, Infrastructure and Planning), Crown Copyright
4	Ground floor layout	Attachment 8 – Ministerial Infrastructure Designation (MID)	Aug-25	© State of Queensland

		Planning Assessment Report, 112 Mary Street, East Toowoomba, August 2025, p. 9.		and/or report author (copyright owner uncertain)
5	Level 1 layout	Attachment 8 – Ministerial Infrastructure Designation (MID) Planning Assessment Report, 112 Mary Street, East Toowoomba, August 2025, p. 10.	Aug-25	© State of Queensland and/or report author (copyright owner uncertain)
6	Gowrie House western aspect from Mary street, including the former 2-storey Hofmann Wing (left) and 2-storey Betty Willis Wing (rear-right)	Queensland Heritage Register, Entry QHR 601307 – Gowrie House, Toowoomba (2000). Available at: <a href="https://apps.des.qld.gov.au/heritage-register/detail/?id=601307">https://apps.des.qld.gov.au/heritage-register/detail/?id=601307</a> (accessed 30 May 2026)	May-26	© State of Queensland (Department of Environment, Tourism, Science and Innovation), Crown Copyright
7	Gowrie House eastern aspect from Arthur Street (showing the “Betty Willis Wing”)	<i>Google Street View</i> , imagery dated 2024. (accessed 30 May 2026)	2026	© Google / Google Street View and data providers
8	Gowrie House southerly aspect from Arthur Street (showing the “Betty	<i>Google Street View</i> , imagery dated 2024. (accessed 30 May 2026)	2026	© Google / Google Street View and data providers

	Willis Wing”)			
9	Construction of the Betty Willis Wing at the rear of Gowrie House	Toowoomba Chronicle, 18 August 1990, “YWCA building gets \$5000 boost”.	18-Aug-90	© publisher of the <i>Toowoomba Chronicle</i>
10	Betty Willis Wing donor board	Willis, B. (2007). <i>Another Turn in the Road: Memoirs of Betty Willis O.A.M.</i> , Community Books Australia, Darling Heights, QLD, p. 129.	2007	© Betty Willis and/or publisher, Community Books Australia
11	Betty Willis Wing Donor board installed on the rear eastern wall of Gowrie House, next to the door leading into the Betty Willis Wing	Urbis, <i>Heritage Addendum Report</i> , June 2025, p. 100.	Jun-25	© Urbis Pty Ltd
12	Betty Willis and Tom Burns at the opening of the Betty Willis Wing	Toowoomba Chronicle, 20 May 1991, “Disabled Hostel Officially Opened”, p. 3.	20-May-91	© publisher of the <i>Toowoomba Chronicle</i>
13	Betty Willis Wing plaque	Willis, B. (2007). <i>Another Turn in the Road: Memoirs of Betty Willis O.A.M.</i> , Community Books Australia, Darling Heights, QLD, p. 130.	2007	© Betty Willis and/or publisher, Community Books Australia
14	Betty Willis Wing	Toowoomba Chronicle, 17 May 1991, “YWCA opens	17-May-91	© publisher of the

	dining room	accommodation wing at Gowrie House complex”, p. 20.		<i>Toowoomba Chronicle</i>
--	----------------	--	--	--------------------------------