

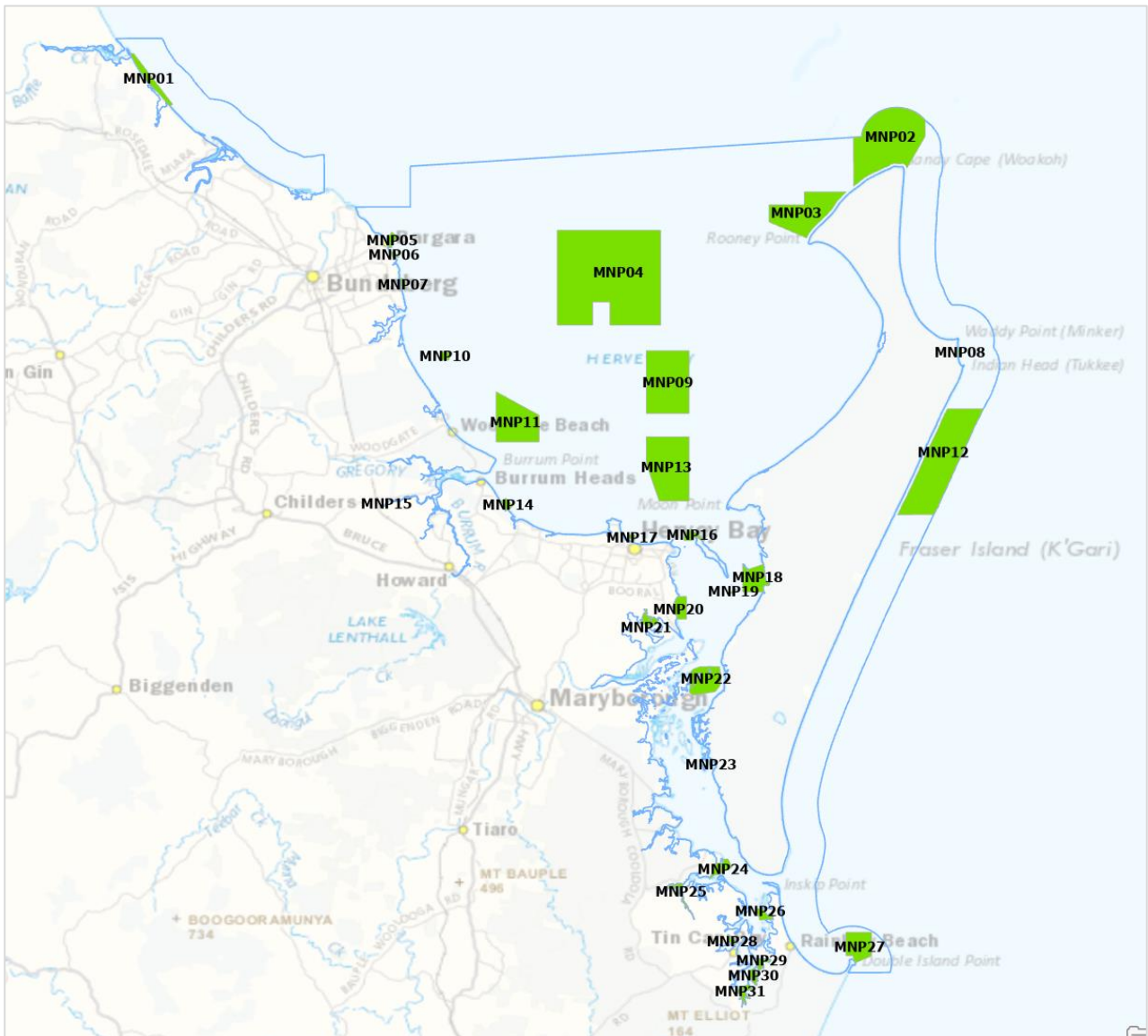
Great Sandy Marine Park

Zones to be included in Final Zoning Plan

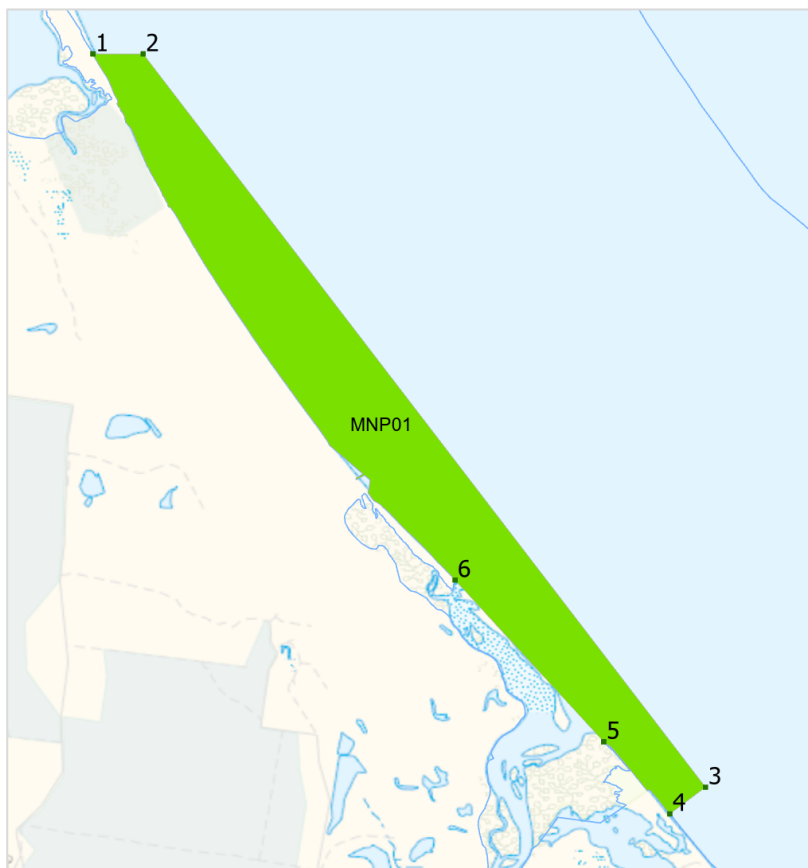
2023

Marine National Park Zone (MNP) coordinates

Coordinates are listed in a clockwise direction, starting at the north-west coordinate (top left) of each zone/area where practical.



MNP01: Littabella



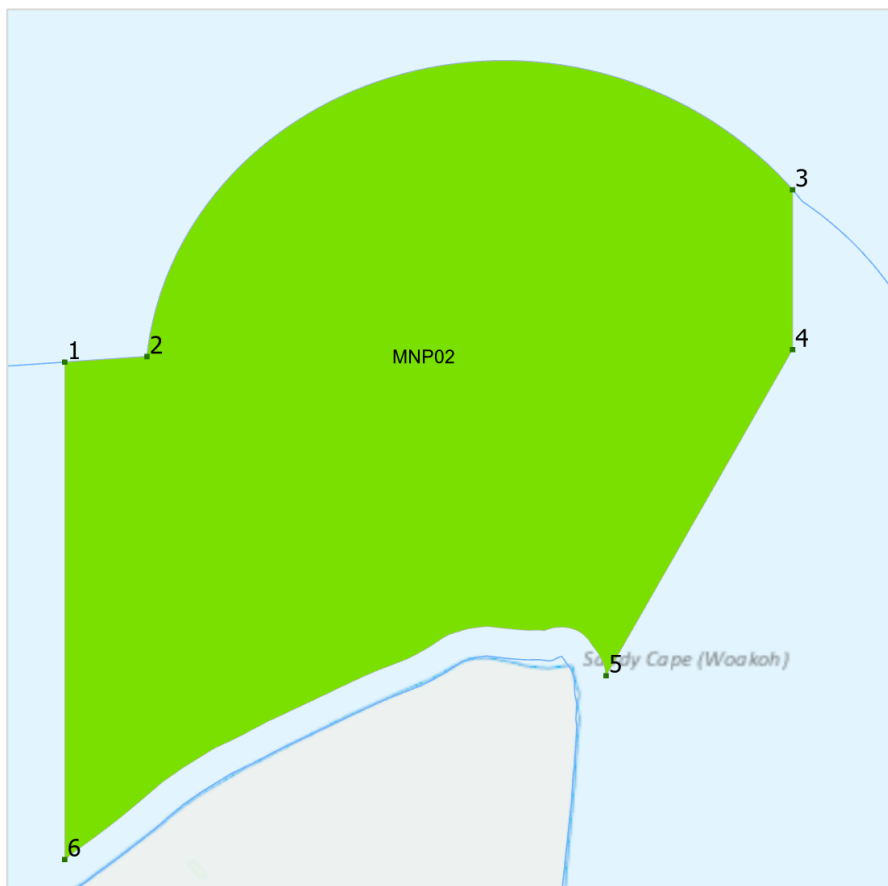
Coord inate	Zone	Zone name	Latitude (DDM)	Longitude (DDM)	Latitude (DD)	Longitude (DD)
1	MNP01	Littabella	24°31.315'S	152°3.913'E	-24.521917	152.06522
2	MNP01	Littabella	24°31.315'S	152°4.237'E	-24.521917	152.070617
3	MNP01	Littabella	24°36.045'S	152°7.864'E	-24.60075	152.131067
4	MNP01	Littabella	24°36.217'S	152°7.634'E	-24.603617	152.127227
5	MNP01	Littabella	24°35.752'S	152°7.207'E	-24.595862	152.120123
6	MNP01	Littabella	24°34.709'S	152°6.249'E	-24.578483	152.104147

Note:

Between points 4 and 5, the boundary is the marine park outer boundary.

Between points 6 and 1, the boundary is the marine park outer boundary.

MNP02: Breaksea Spit



Coordinate	Zone	Zone name	Latitude (DDM)	Longitude (DDM)	Latitude (DD)	Longitude (DD)
1	MNP02	Breaksea Spit	24°39.115'S	153°11.3'E	-24.651923	153.188333
2	MNP02	Breaksea Spit	24°39.064'S	153°12.057'E	-24.65107	153.200953
3	MNP02	Breaksea Spit	24°37.53'S	153°18.0'E	-24.625506	153.3
4	MNP02	Breaksea Spit	24°39.0'S	153°18.0'E	-24.65	153.3
5	MNP02	Breaksea Spit	24°42.0'S	153°16.283'E	-24.7	153.271384
6	MNP02	Breaksea Spit	24°43.691'S	153°11.3'E	-24.728182	153.188333

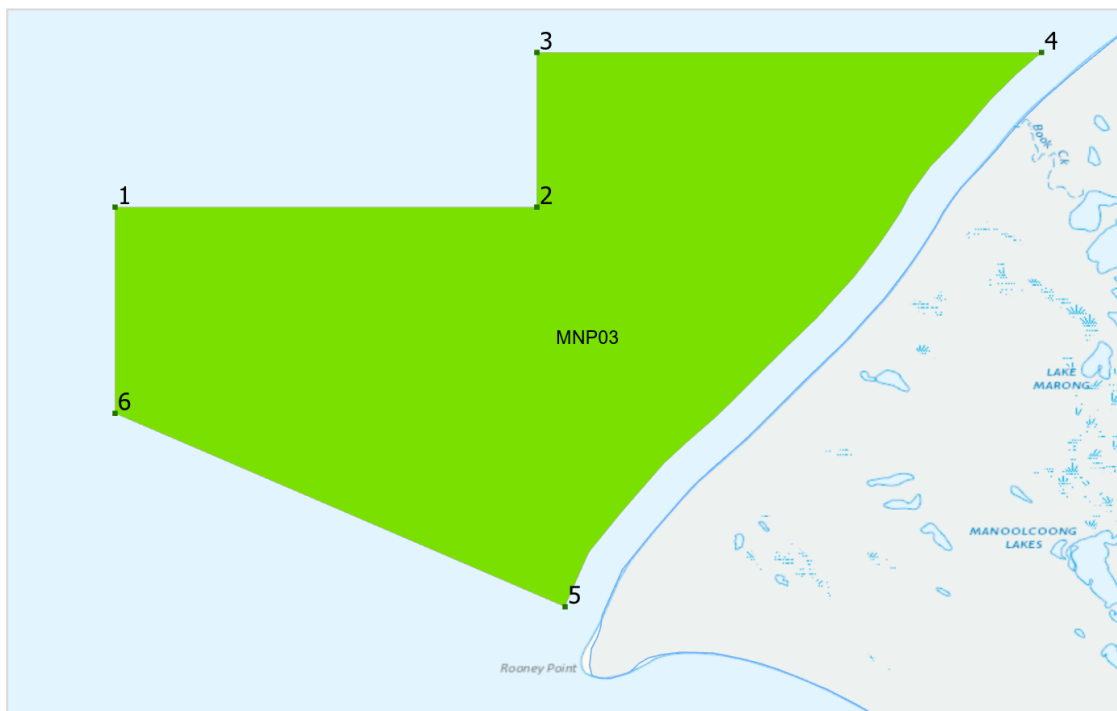
Note:

Between points 1 and 3, the boundary is the limit of Queensland Coastal Waters.

Points 3 to 5 align with the proposed revision of the Fraser Island declared Fish Habitat Area.

Between points 5 and 6, the boundary is defined by a 500m coastal line, which is the imaginary line, every point of which is 500m seaward from the marine park boundary.

MNP03: Rooney Point

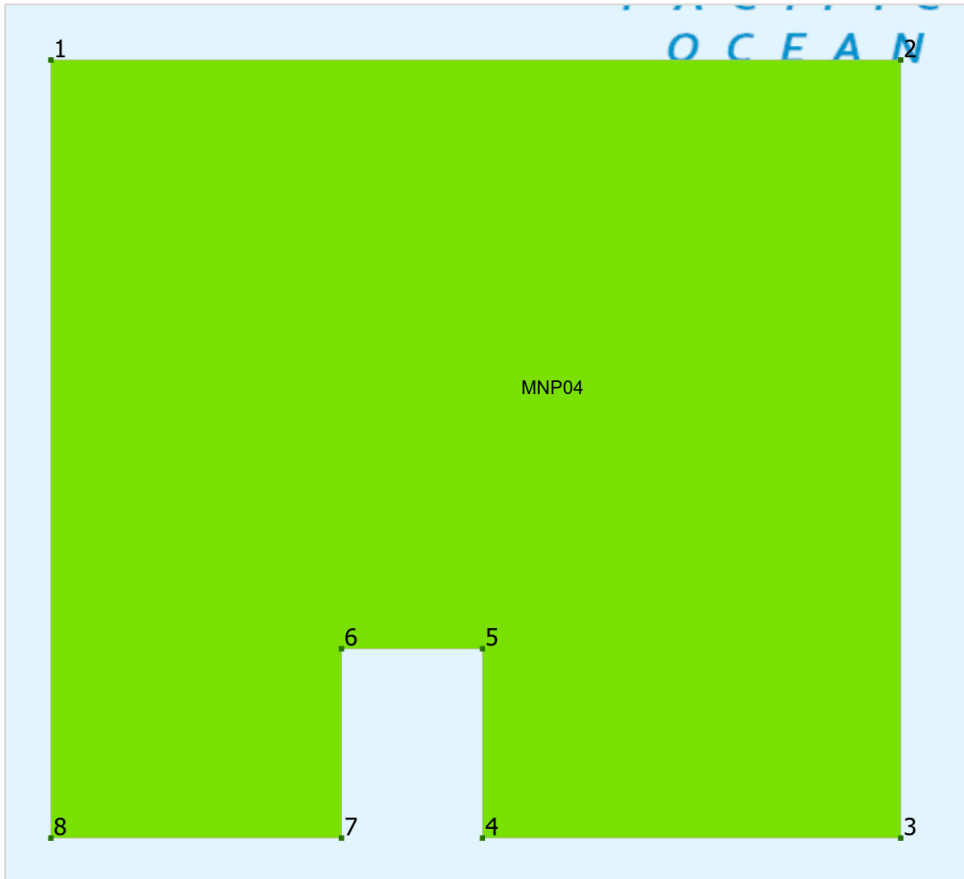


Coord inate	Zone	Zone name	Latitude (DDM)	Longitude (DDM)	Latitude (DD)	Longitude (DD)
1	MNP03	Rooney Point	24°45.4'S	153°3.45'E	-24.756667	153.0575
2	MNP03	Rooney Point	24°45.4'S	153°6.726'E	-24.756667	153.1121
3	MNP03	Rooney Point	24°44.2'S	153°6.726'E	-24.736667	153.1121
4	MNP03	Rooney Point	24°44.2'S	153°10.645'E	-24.736667	153.177421
5	MNP03	Rooney Point	24°48.501'S	153°6.945'E	-24.80835	153.115751
6	MNP03	Rooney Point	24°47.0'S	153°3.45'E	-24.783333	153.0575

Note:

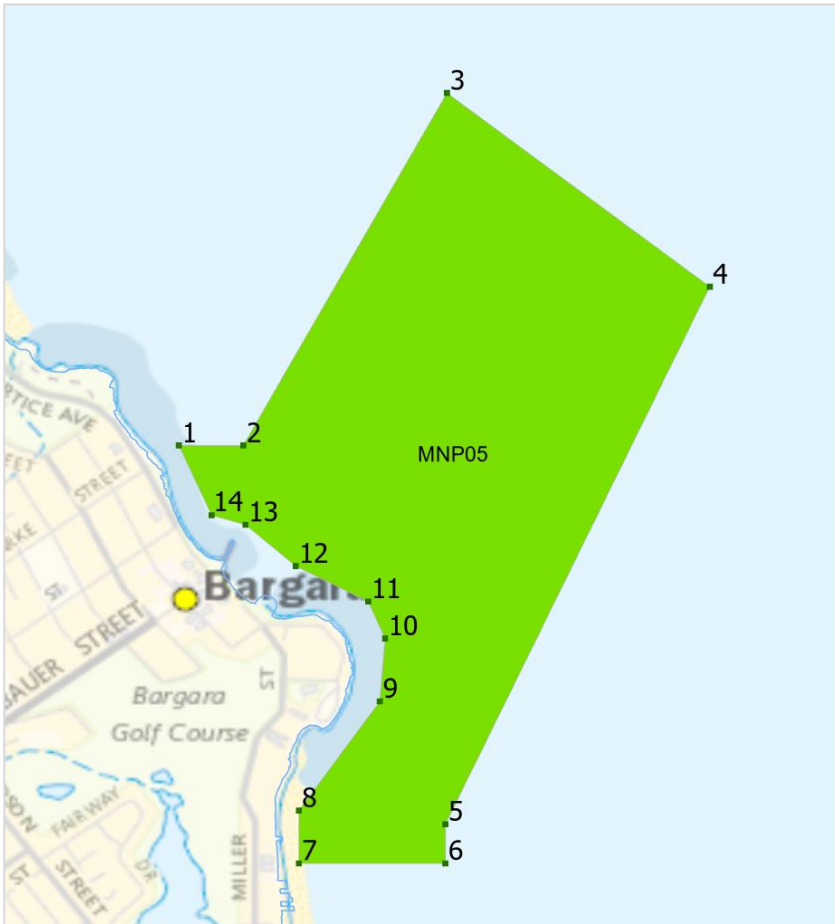
Between points 4 and 5, the boundary is defined by a 500m coastal line, which is the imaginary line, every point of which is 500m seaward from the marine park boundary.

MNP04: Central Hervey Bay



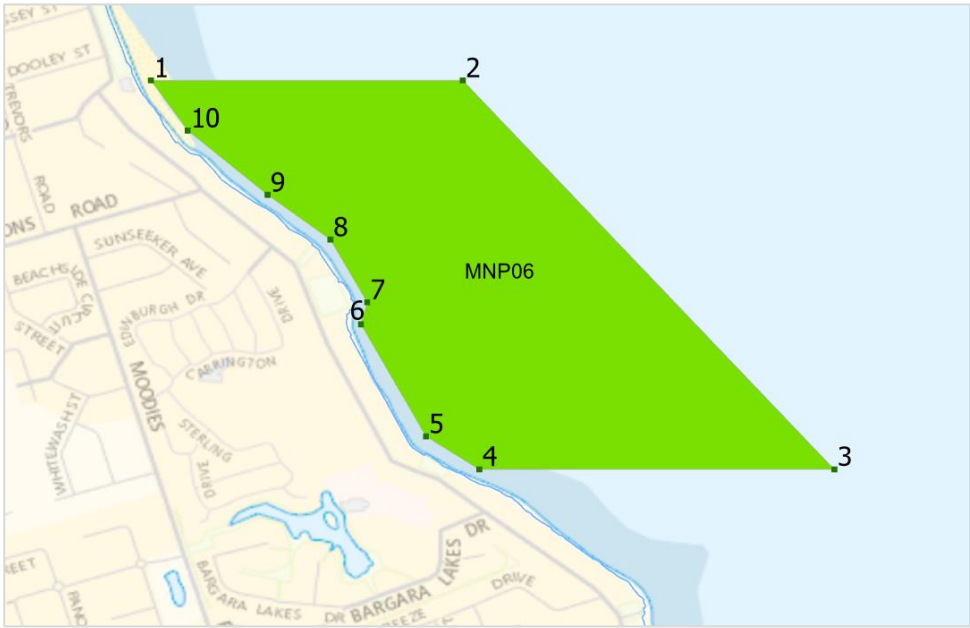
Coordinate	Zone	Zone name	Latitude (DDM)	Longitude (DDM)	Latitude (DD)	Longitude (DD)
1	MNP04	Central Hervey Bay	24°47.77'S	152°43.7'E	-24.796167	152.728333
2	MNP04	Central Hervey Bay	24°47.77'S	152°53.35'E	-24.796167	152.889167
3	MNP04	Central Hervey Bay	24°56.605'S	152°53.35'E	-24.943417	152.889167
4	MNP04	Central Hervey Bay	24°56.605'S	152°48.6'E	-24.943417	152.81
5	MNP04	Central Hervey Bay	24°54.456'S	152°48.6'E	-24.9076	152.81
6	MNP04	Central Hervey Bay	24°54.456'S	152°47.0'E	-24.9076	152.783333
7	MNP04	Central Hervey Bay	24°56.605'S	152°47.0'E	-24.943417	152.783333
8	MNP04	Central Hervey Bay	24°56.605'S	152°43.7'E	-24.943417	152.728333

MNP05: Burkitts Reef



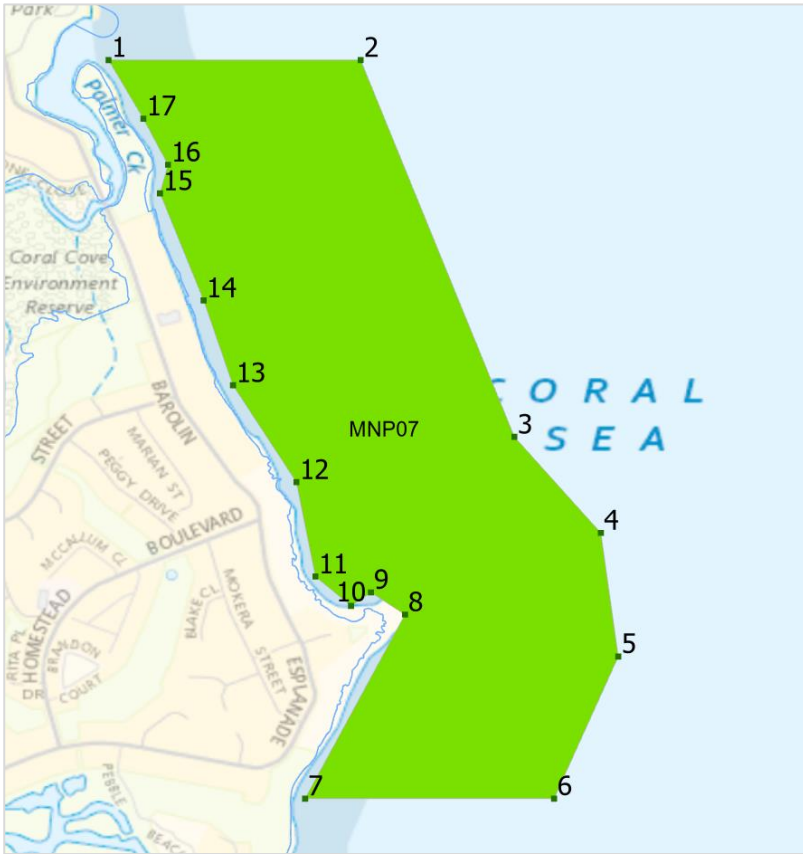
Coord inate	Zone	Zone name	Latitude (DDM)	Longitude (DDM)	Latitude (DD)	Longitude (DD)
1	MNP05	Burkitts Reef	24°48.604'S	152°27.767'E	-24.810067	152.462783
2	MNP05	Burkitts Reef	24°48.604'S	152°27.889'E	-24.810067	152.464817
3	MNP05	Burkitts Reef	24°47.938'S	152°28.274'E	-24.798967	152.471233
4	MNP05	Burkitts Reef	24°48.304'S	152°28.771'E	-24.805067	152.479517
5	MNP05	Burkitts Reef	24°49.32'S	152°28.271'E	-24.822	152.471183
6	MNP05	Burkitts Reef	24°49.394'S	152°28.271'E	-24.823233	152.471183
7	MNP05	Burkitts Reef	24°49.394'S	152°27.994'E	-24.823233	152.466567
8	MNP05	Burkitts Reef	24°49.294'S	152°27.994'E	-24.821567	152.466567
9	MNP05	Burkitts Reef	24°49.088'S	152°28.147'E	-24.818128	152.469117
10	MNP05	Burkitts Reef	24°48.969'S	152°28.157'E	-24.81615	152.469283
11	MNP05	Burkitts Reef	24°48.899'S	152°28.125'E	-24.814983	152.46875
12	MNP05	Burkitts Reef	24°48.832'S	152°27.988'E	-24.813867	152.466467
13	MNP05	Burkitts Reef	24°48.754'S	152°27.893'E	-24.812567	152.464883
14	MNP05	Burkitts Reef	24°48.736'S	152°27.829'E	-24.812267	152.463817

MNP06: Hoffmans Rocks



Coord inate	Zone	Zone name	Latitude (DDM)	Longitude (DDM)	Latitude (DD)	Longitude (DD)
1	MNP06	Hoffmans Rocks	24°49.765'S	152°28.092'E	-24.829417	152.4682
2	MNP06	Hoffmans Rocks	24°49.765'S	152°28.49'E	-24.829417	152.474833
3	MNP06	Hoffmans Rocks	24°50.261'S	152°28.964'E	-24.837683	152.482733
4	MNP06	Hoffmans Rocks	24°50.261'S	152°28.511'E	-24.837683	152.475183
5	MNP06	Hoffmans Rocks	24°50.219'S	152°28.443'E	-24.836983	152.47405
6	MNP06	Hoffmans Rocks	24°50.076'S	152°28.36'E	-24.8346	152.472667
7	MNP06	Hoffmans Rocks	24°50.048'S	152°28.368'E	-24.834133	152.4728
8	MNP06	Hoffmans Rocks	24°49.968'S	152°28.321'E	-24.8328	152.472017
9	MNP06	Hoffmans Rocks	24°49.911'S	152°28.241'E	-24.83185	152.470683
10	MNP06	Hoffmans Rocks	24°49.829'S	152°28.139'E	-24.830483	152.468983

MNP07: Barolin Rock



Coord inate	Zone	Zone name	Latitude (DDM)	Longitude (DDM)	Latitude (DD)	Longitude (DD)
1	MNP07	Barolin Rock	24°52.271'S	152°29.012'E	-24.871183	152.483533
2	MNP07	Barolin Rock	24°52.271'S	152°29.33'E	-24.871183	152.488833
3	MNP07	Barolin Rock	24°52.746'S	152°29.524'E	-24.8791	152.492067
4	MNP07	Barolin Rock	24°52.867'S	152°29.633'E	-24.881117	152.493883
5	MNP07	Barolin Rock	24°53.023'S	152°29.655'E	-24.883717	152.49425
6	MNP07	Barolin Rock	24°53.202'S	152°29.574'E	-24.8867	152.4929
7	MNP07	Barolin Rock	24°53.202'S	152°29.26'E	-24.8867	152.487667
8	MNP07	Barolin Rock	24°52.97'S	152°29.386'E	-24.882833	152.489767
9	MNP07	Barolin Rock	24°52.942'S	152°29.343'E	-24.882367	152.48905
10	MNP07	Barolin Rock	24°52.959'S	152°29.318'E	-24.88265	152.488633
11	MNP07	Barolin Rock	24°52.922'S	152°29.273'E	-24.882033	152.487883
12	MNP07	Barolin Rock	24°52.803'S	152°29.249'E	-24.88005	152.487483
13	MNP07	Barolin Rock	24°52.681'S	152°29.169'E	-24.878017	152.48615
14	MNP07	Barolin Rock	24°52.574'S	152°29.132'E	-24.876233	152.485533
15	MNP07	Barolin Rock	24°52.439'S	152°29.077'E	-24.873983	152.484617
16	MNP07	Barolin Rock	24°52.403'S	152°29.087'E	-24.873383	152.484783
17	MNP07	Barolin Rock	24°52.345'S	152°29.056'E	-24.872417	152.484267

MNP08: Champagne Pools



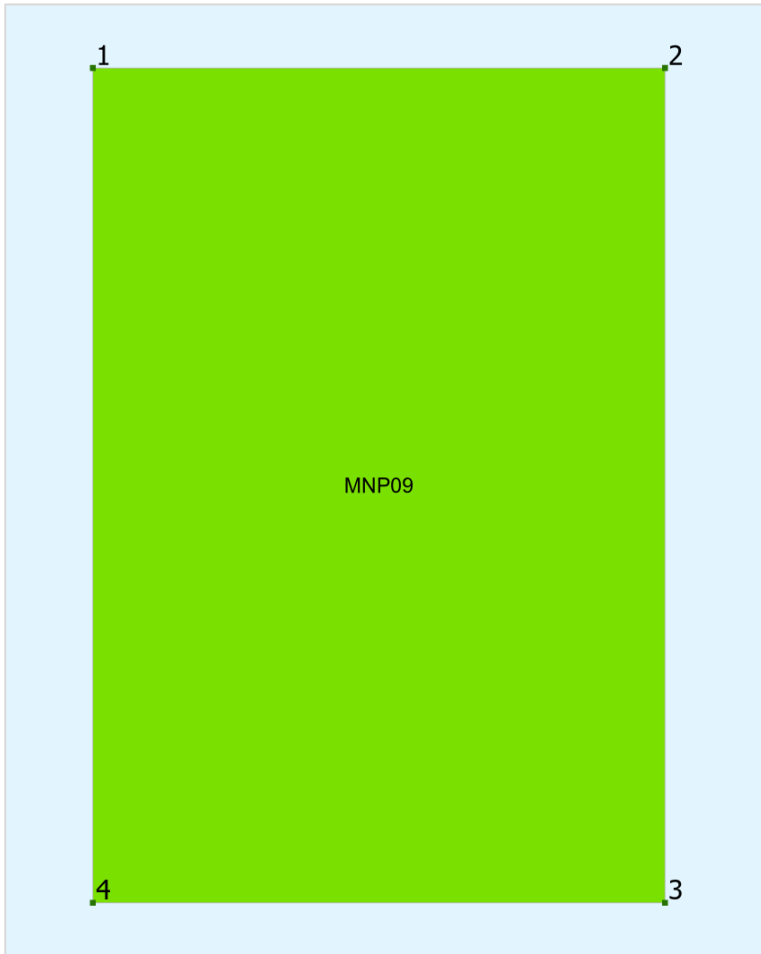
Coord inate	Zone	Zone name	Latitude (DDM)	Longitude (DDM)	Latitude (DD)	Longitude (DD)
1	MNP08	Champagne Pools	24°58.84'S	153°21.023'E	-24.980667	153.35039
2	MNP08	Champagne Pools	24°58.84'S	153°21.364'E	-24.980667	153.356066
3	MNP08	Champagne Pools	24°59.436'S	153°21.425'E	-24.9906	153.357082
4	MNP08	Champagne Pools	24°59.436'S	153°21.094'E	-24.9906	153.351568

Note:

Between points 2 and 3, the boundary is defined by a 500m coastal line, which is the imaginary line, every point of which is 500m seaward from the marine park boundary.

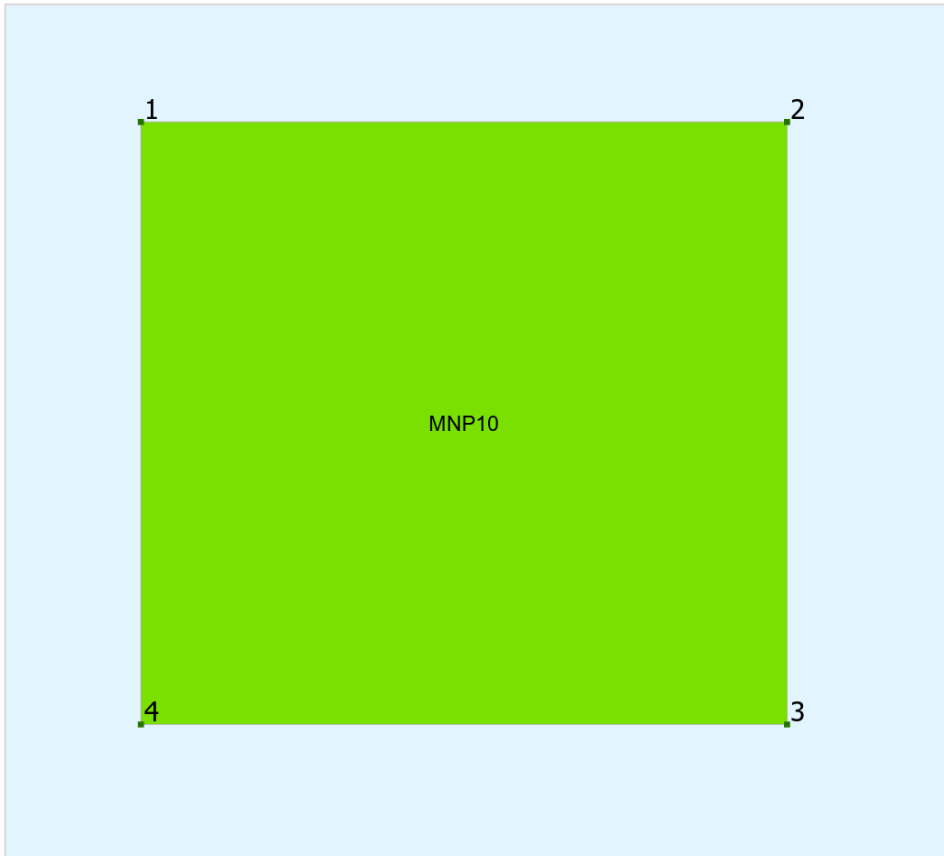
Between points 4 and 1, the boundary is the marine park outer boundary.

MNP09: Southern Hervey Bay



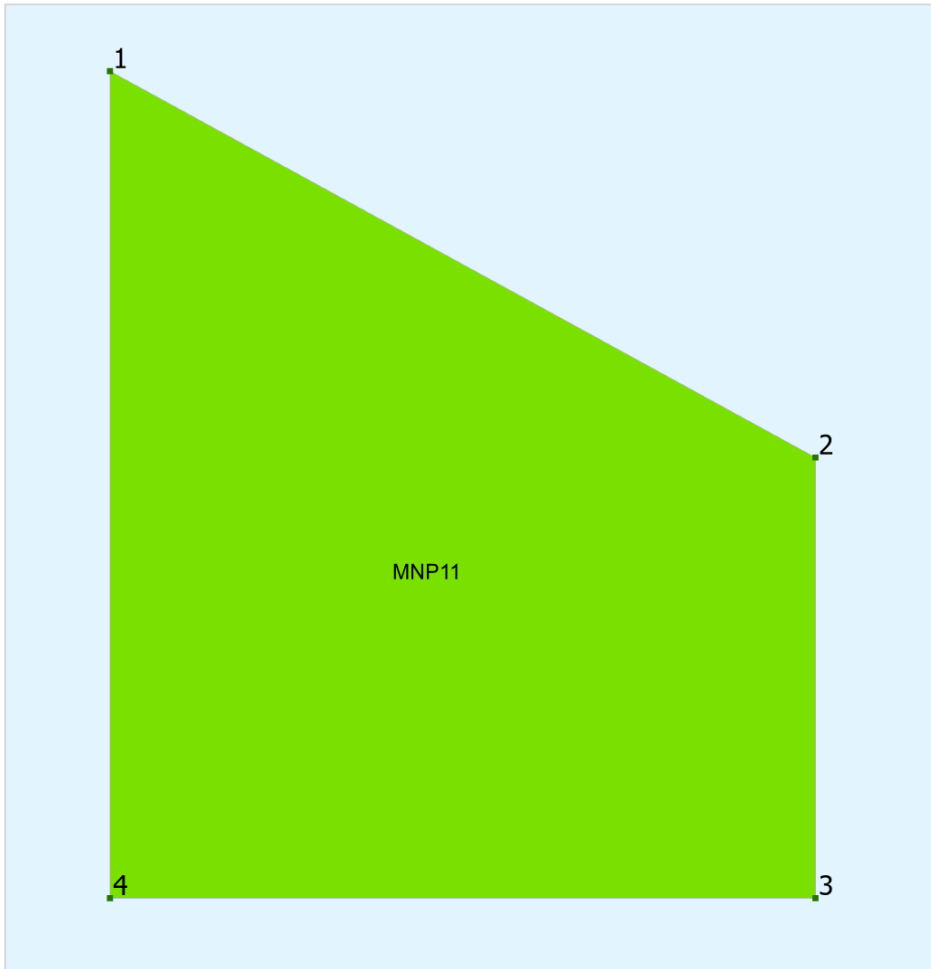
Coordinate	Zone	Zone name	Latitude (DDM)	Longitude (DDM)	Latitude (DD)	Longitude (DD)
1	MNP09	Southern Hervey Bay	24°59.0'S	152°52.0'E	-24.983333	152.866667
2	MNP09	Southern Hervey Bay	24°59.0'S	152°56.0'E	-24.983333	152.933333
3	MNP09	Southern Hervey Bay	25°4.833'S	152°56.0'E	-25.08055	152.933333
4	MNP09	Southern Hervey Bay	25°4.833'S	152°52.0'E	-25.08055	152.866667

MNP10: Four Mile Reef



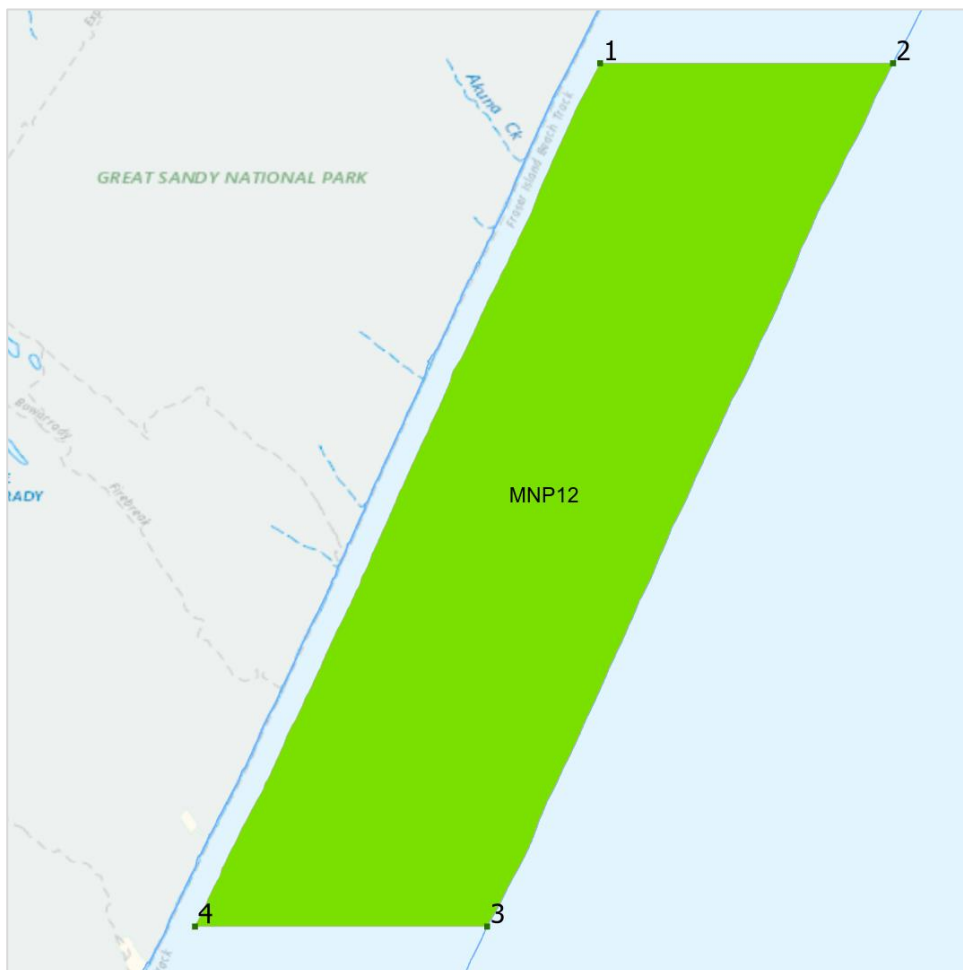
Coordinate	Zone	Zone name	Latitude (DDM)	Longitude (DDM)	Latitude (DD)	Longitude (DD)
1	MNP10	Four Mile Reef	24°59.094'S	152°32.83'E	-24.9849	152.547167
2	MNP10	Four Mile Reef	24°59.094'S	152°33.645'E	-24.9849	152.56075
3	MNP10	Four Mile Reef	24°59.854'S	152°33.645'E	-24.997567	152.56075
4	MNP10	Four Mile Reef	24°59.854'S	152°32.83'E	-24.997567	152.547167

MNP11: Offshore Woodgate



Coordinate	Zone	Zone name	Latitude (DDM)	Longitude (DDM)	Latitude (DD)	Longitude (DD)
1	MNP11	Offshore Woodgate	25°2.806'S	152°37.998'E	-25.046767	152.6333
2	MNP11	Offshore Woodgate	25°4.999'S	152°42.0'E	-25.083317	152.7
3	MNP11	Offshore Woodgate	25°7.5'S	152°42.0'E	-25.125	152.7
4	MNP11	Offshore Woodgate	25°7.5'S	152°37.998'E	-25.125	152.6333

MNP12: Offshore Dundubara



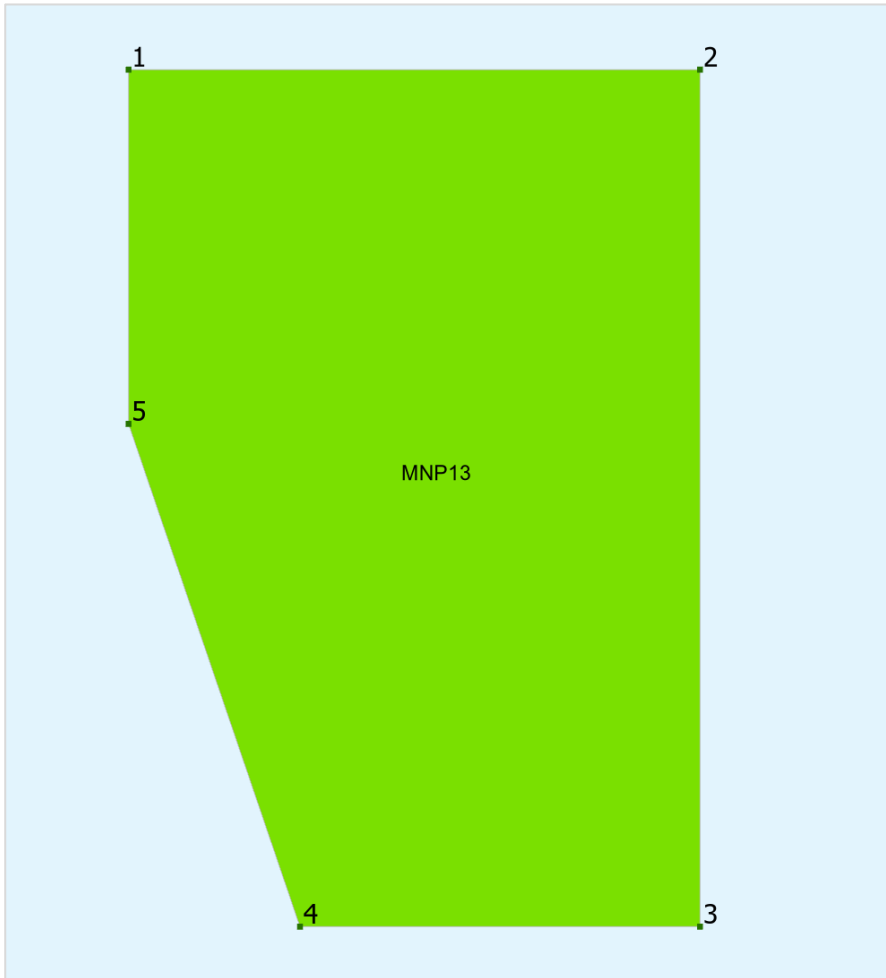
Coord inate	Zone	Zone name	Latitude (DDM)	Longitude (DDM)	Latitude (DD)	Longitude (DD)
1	MNP12	Offshore Dundubara	25°4.395'S	153°20.063'E	-25.07325	153.33438
2	MNP12	Offshore Dundubara	25°4.395'S	153°23.416'E	-25.07325	153.390268
3	MNP12	Offshore Dundubara	25°14.278'S	153°18.769'E	-25.237967	153.312822
4	MNP12	Offshore Dundubara	25°14.278'S	153°15.424'E	-25.237967	153.257073

Note:

Between points 2 and 3, the boundary is the limit of Queensland Coastal Waters.

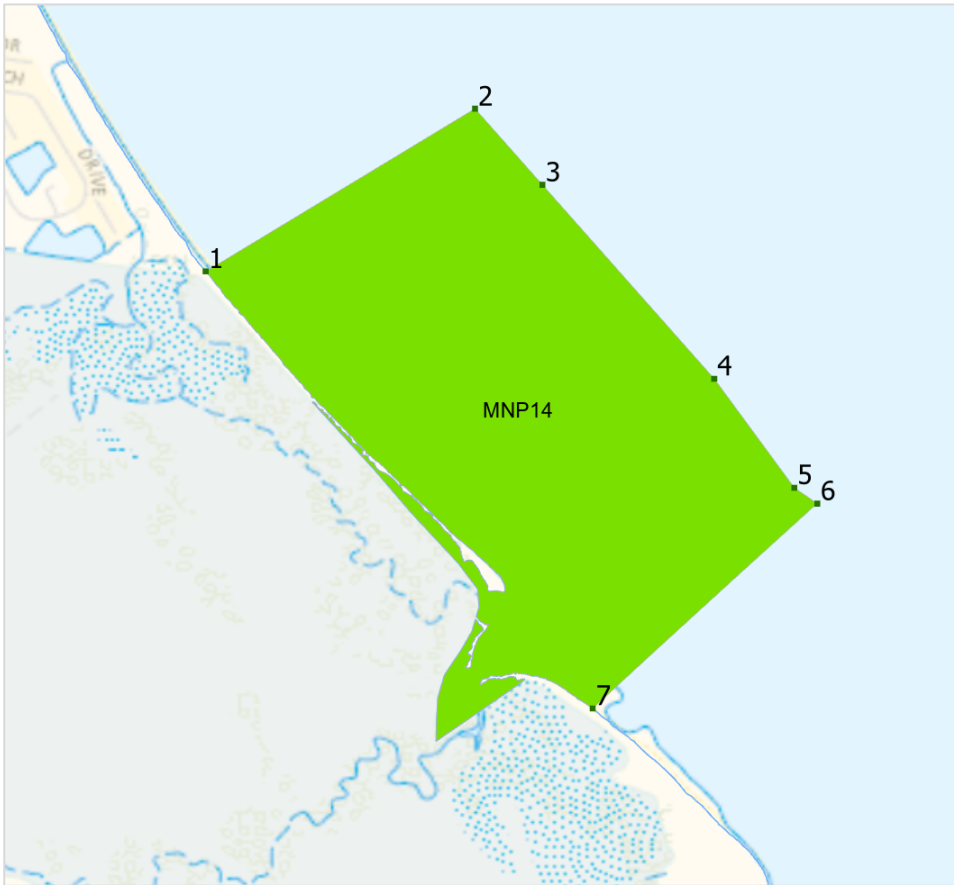
Between points 4 and 1, the boundary is defined by a 500m coastal line, which is the imaginary line, every point of which is 500m seaward from the marine park boundary.

MNP13: Fork Bank



Coord inate	Zone	Zone name	Latitude (DDM)	Longitude (DDM)	Latitude (DD)	Longitude (DD)
1	MNP13	Fork Bank	25°7.0'S	152°52.0'E	-25.116667	152.866667
2	MNP13	Fork Bank	25°7.0'S	152°56.0'E	-25.116667	152.933333
3	MNP13	Fork Bank	25°13.0'S	152°56.0'E	-25.216667	152.933333
4	MNP13	Fork Bank	25°13.0'S	152°53.2'E	-25.216667	152.886667
5	MNP13	Fork Bank	25°9.48'S	152°52.0'E	-25.158	152.866667

MNP14: Marsh Creek



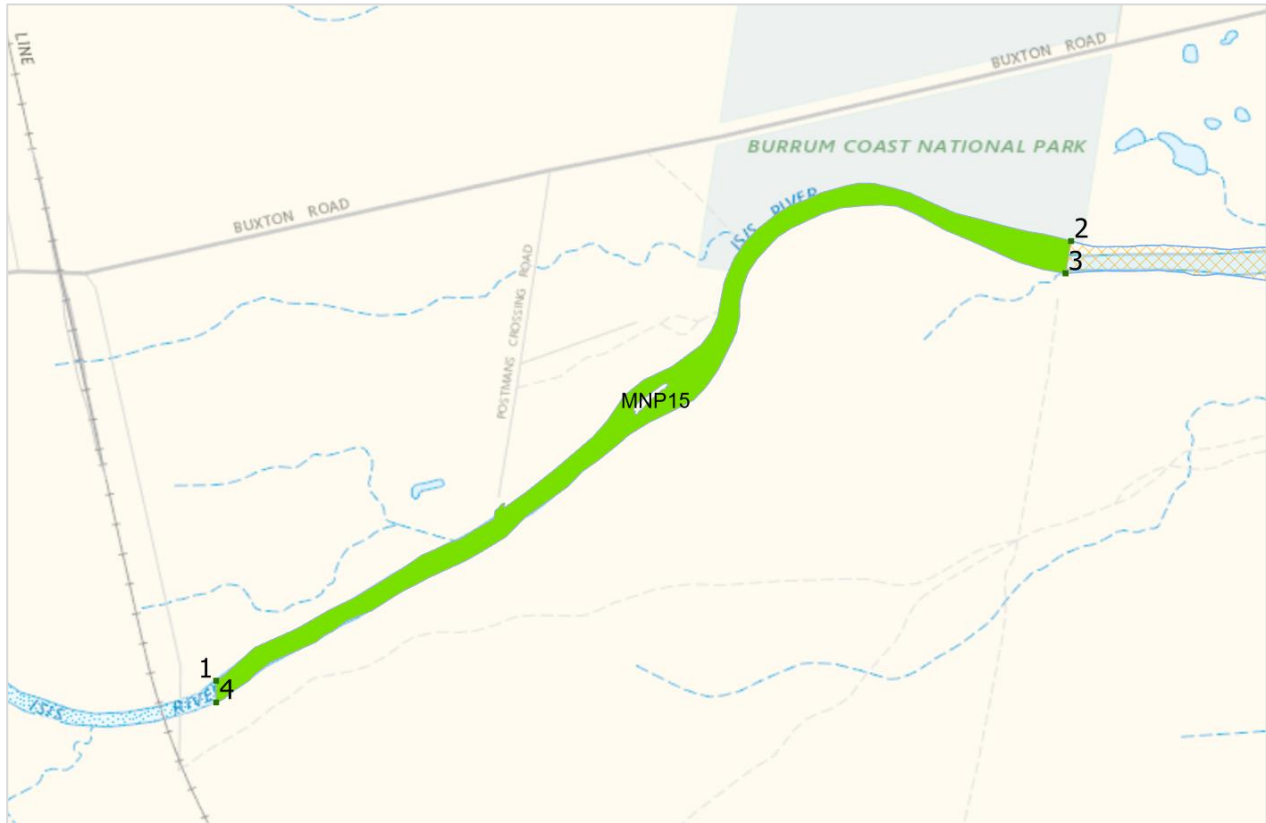
Coord inate	Zone	Zone name	Latitude (DDM)	Longitude (DDM)	Latitude (DD)	Longitude (DD)
1	MNP14	Marsh Creek	25°13.032'S	152°38.405'E	-25.217194	152.640089
2	MNP14	Marsh Creek	25°12.723'S	152°38.917'E	-25.212042	152.648611
3	MNP14	Marsh Creek	25°12.867'S	152°39.045'E	-25.214451	152.650744
4	MNP14	Marsh Creek	25°13.236'S	152°39.371'E	-25.220595	152.656183
5	MNP14	Marsh Creek	25°13.443'S	152°39.523'E	-25.224046	152.658716
6	MNP14	Marsh Creek	25°13.473'S	152°39.567'E	-25.224556	152.65945
7	MNP14	Marsh Creek	25°13.862'S	152°39.14'E	-25.231033	152.652334

Note:

Points 1 to 6 align with the proposed revision of the Beelbi declared Fish Habitat Area.

Between points 7 and 1, the boundary is the marine park outer boundary.

MNP15: Isis River



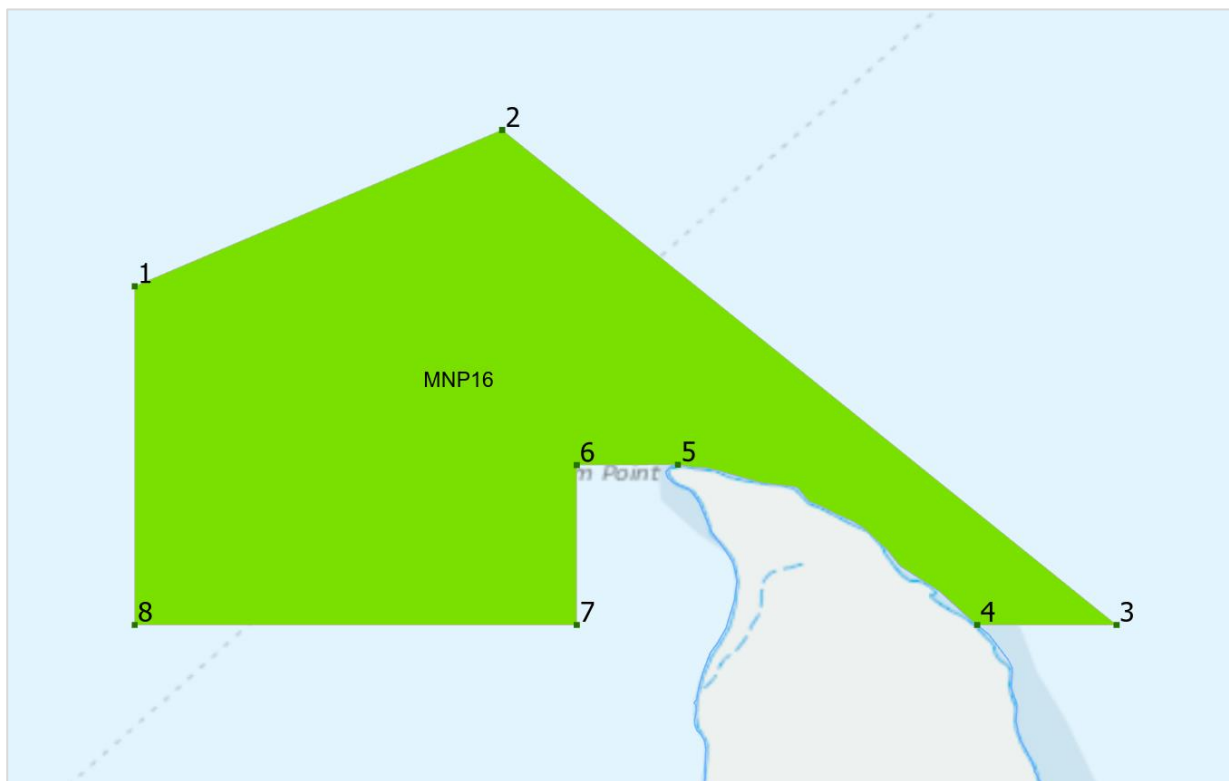
Coord inate	Zone	Zone name	Latitude (DDM)	Longitude (DDM)	Latitude (DD)	Longitude (DD)
1	MNP15	Isis River	25°13.653'S	152°27.135'E	-25.227551	152.45225
2	MNP15	Isis River	25°12.98'S	152°28.445'E	-25.216327	152.474082
3	MNP15	Isis River	25°13.029'S	152°28.436'E	-25.217151	152.473941
4	MNP15	Isis River	25°13.686'S	152°27.135'E	-25.228103	152.45225

Note:

Between points 1 and 2 and points 3 and 4, the boundary is the marine park outer boundary.

Between points 2 and 3, the boundary aligns with the Burrum declared Fish Habitat Area.

MNP16: Woody Island

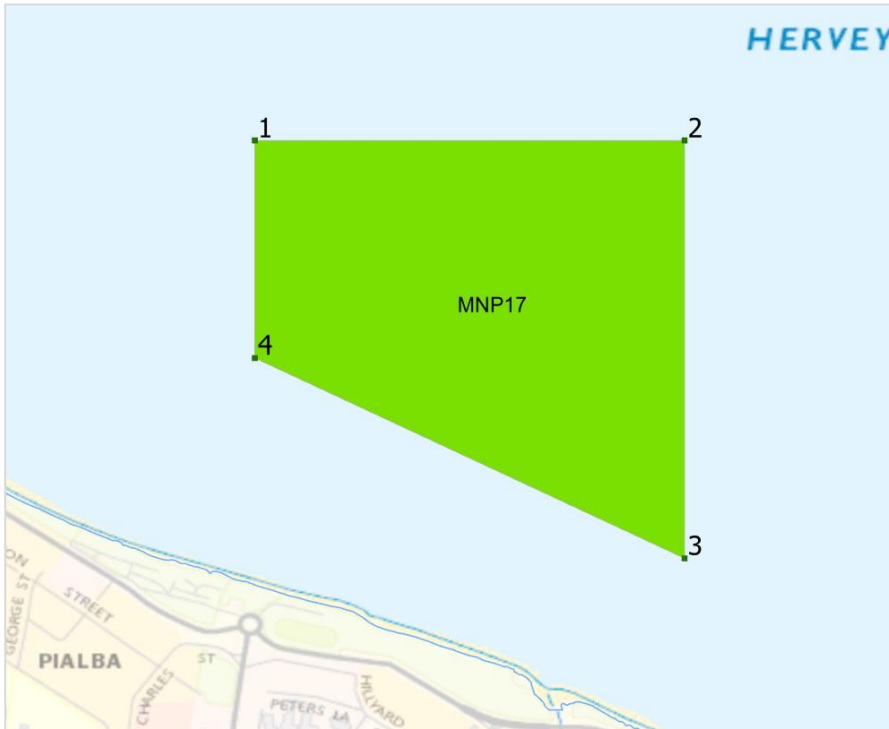


Coordinate	Zone	Zone name	Latitude (DDM)	Longitude (DDM)	Latitude (DD)	Longitude (DD)
1	MNP16	Woody Island	25°16.0'S	152°55.5'E	-25.266667	152.925
2	MNP16	Woody Island	25°15.685'S	152°56.24'E	-25.261417	152.937333
3	MNP16	Woody Island	25°16.682'S	152°57.477'E	-25.278033	152.95795
4	MNP16	Woody Island	25°16.682'S	152°57.196'E	-25.278033	152.953273
5	MNP16	Woody Island	25°16.359'S	152°56.594'E	-25.272658	152.943231
6	MNP16	Woody Island	25°16.36'S	152°56.39'E	-25.272667	152.939833
7	MNP16	Woody Island	25°16.682'S	152°56.39'E	-25.278033	152.939833
8	MNP16	Woody Island	25°16.682'S	152°55.5'E	-25.278033	152.925

Note:

Between points 4 and 5, the boundary is the marine park outer boundary.

MNP17: Pialba Reef



Coord inate	Zone	Zone name	Latitude (DDM)	Longitude (DDM)	Latitude (DD)	Longitude (DD)
1	MNP17	Pialba Reef	25°16.136'S	152°50.385'E	-25.268933	152.83975
2	MNP17	Pialba Reef	25°16.136'S	152°50.932'E	-25.268933	152.848867
3	MNP17	Pialba Reef	25°16.668'S	152°50.932'E	-25.2778	152.848867
4	MNP17	Pialba Reef	25°16.413'S	152°50.385'E	-25.27355	152.83975

MNP18: Little Woody Island



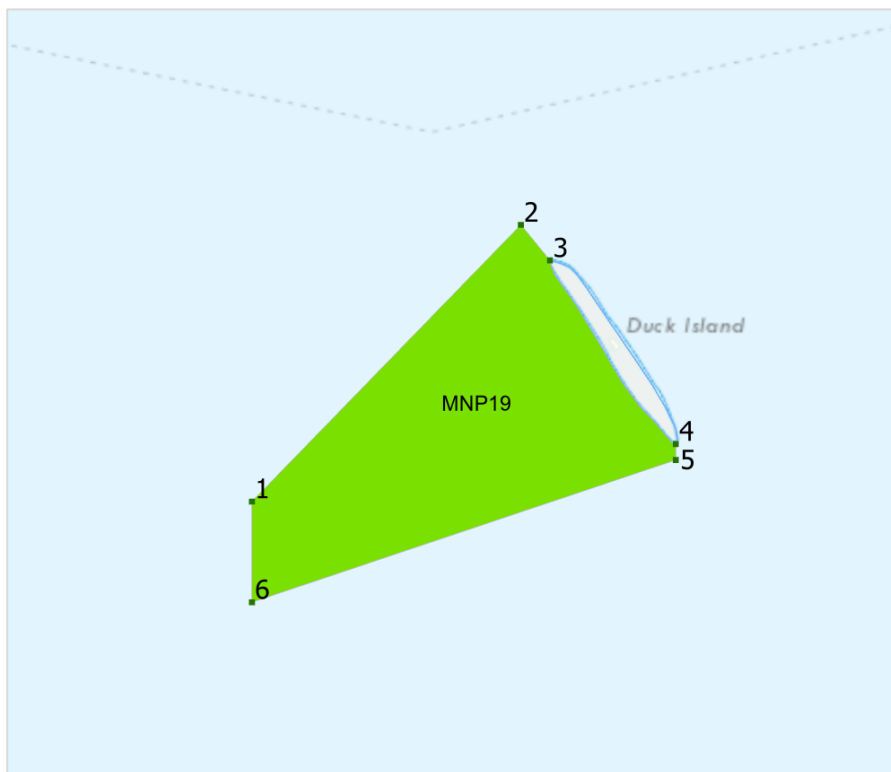
Coord inate	Zone	Zone name	Latitude (DDM)	Longitude (DDM)	Latitude (DD)	Longitude (DD)
1	MNP18	Little Woody Island	25°18.832'S	153°0.99'E	-25.31386	153.0165
2	MNP18	Little Woody Island	25°19.348'S	153°1.484'E	-25.322467	153.024731
3	MNP18	Little Woody Island	25°18.893'S	153°2.909'E	-25.314883	153.04848
4	MNP18	Little Woody Island	25°21.483'S	153°2.948'E	-25.35805	153.049137
5	MNP18	Little Woody Island	25°21.483'S	153°0.99'E	-25.35805	153.0165

Note:

Between points 1 and 2, the boundary is the marine park outer boundary.

Between points 3 and 4, the boundary is the marine park outer boundary.

MNP19: Duck Island

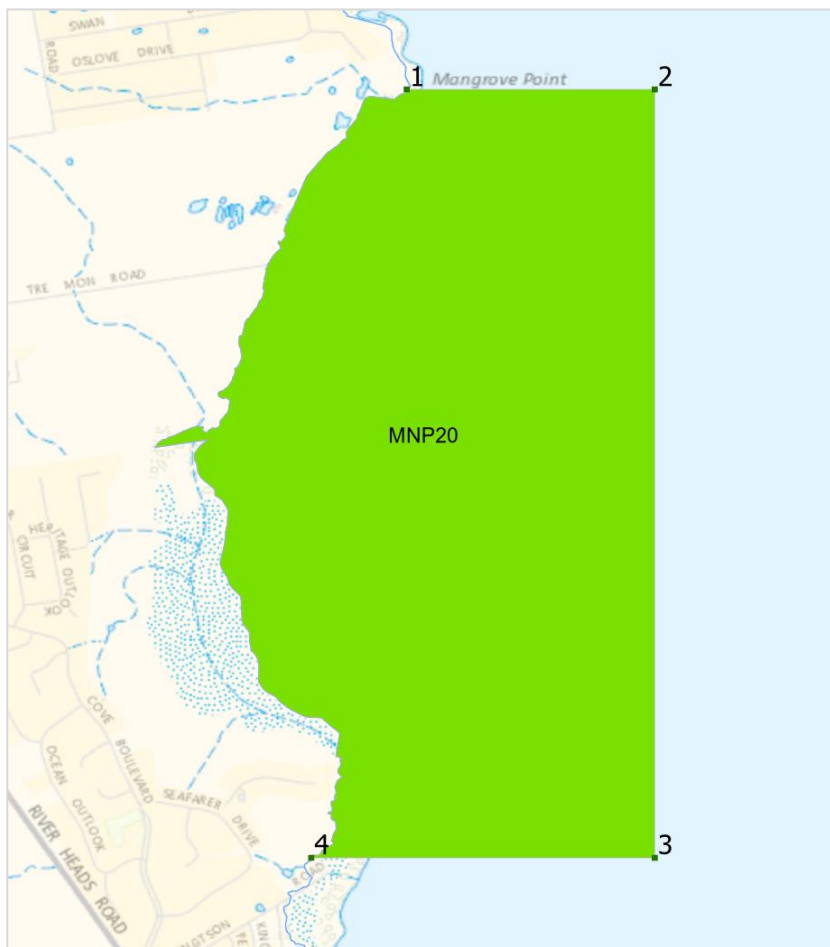


Coord inate	Zone	Zone name	Latitude (DDM)	Longitude (DDM)	Latitude (DD)	Longitude (DD)
1	MNP19	Duck Island	25°21.499'S	152°59.875'E	-25.358317	152.997917
2	MNP19	Duck Island	25°21.147'S	153°0.217'E	-25.35245	153.003617
3	MNP19	Duck Island	25°21.192'S	153°0.254'E	-25.353204	153.004233
4	MNP19	Duck Island	25°21.426'S	153°0.414'E	-25.357098	153.0069
5	MNP19	Duck Island	25°21.446'S	153°0.414'E	-25.357433	153.0069
6	MNP19	Duck Island	25°21.627'S	152°59.875'E	-25.36045	152.997917

Note:

Between points 3 and 4, the boundary is the marine park outer boundary.

MNP20: Mangrove Point

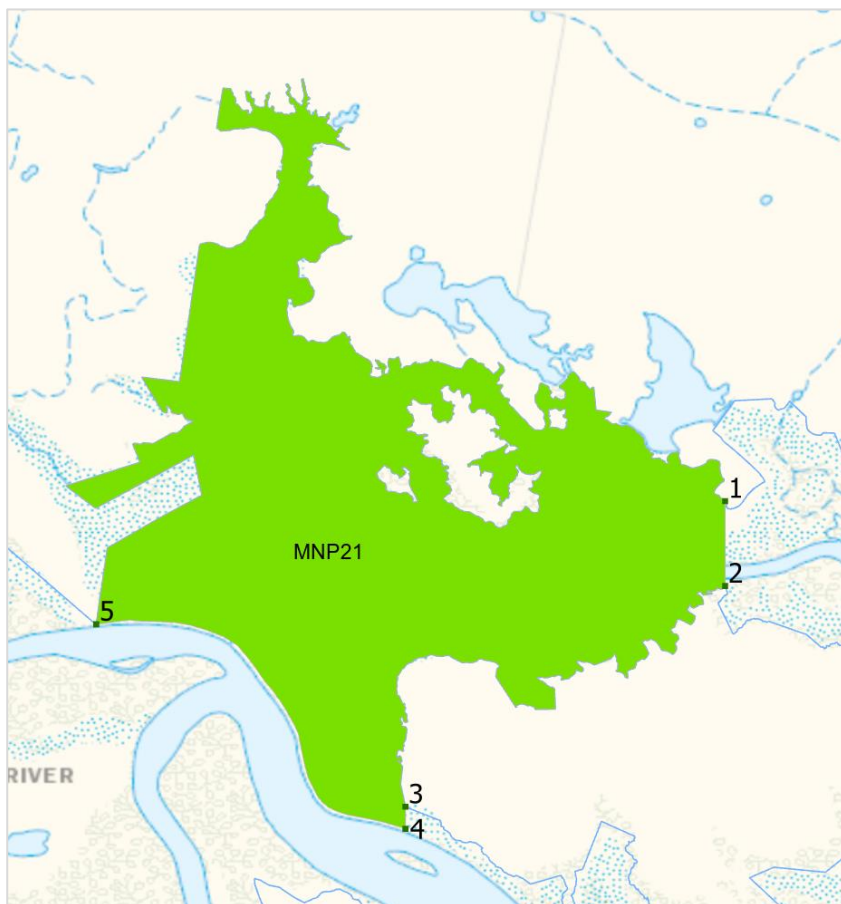


Coord inate	Zone	Zone name	Latitude (DDM)	Longitude (DDM)	Latitude (DD)	Longitude (DD)
1	MNP20	Mangrove Point	25°21.864'S	152°55.061'E	-25.3644	152.917689
2	MNP20	Mangrove Point	25°21.864'S	152°55.751'E	-25.3644	152.929183
3	MNP20	Mangrove Point	25°24.0'S	152°55.751'E	-25.4	152.929183
4	MNP20	Mangrove Point	25°24.0'S	152°54.796'E	-25.4	152.913268

Note:

Between points 4 and 1, the boundary is the marine park outer boundary.

MNP21: Susan River



Coord inate	Zone	Zone name	Latitude (DDM)	Longitude (DDM)	Latitude (DD)	Longitude (DD)
1	MNP21	Susan River	25°24.101'S	152°53.062'E	-25.401687	152.884367
2	MNP21	Susan River	25°24.315'S	152°53.062'E	-25.405248	152.884367
3	MNP21	Susan River	25°24.871'S	152°52.257'E	-25.414514	152.87095
4	MNP21	Susan River	25°24.926'S	152°52.257'E	-25.415441	152.87095
5	MNP21	Susan River	25°24.411'S	152°51.478'E	-25.406858	152.857971

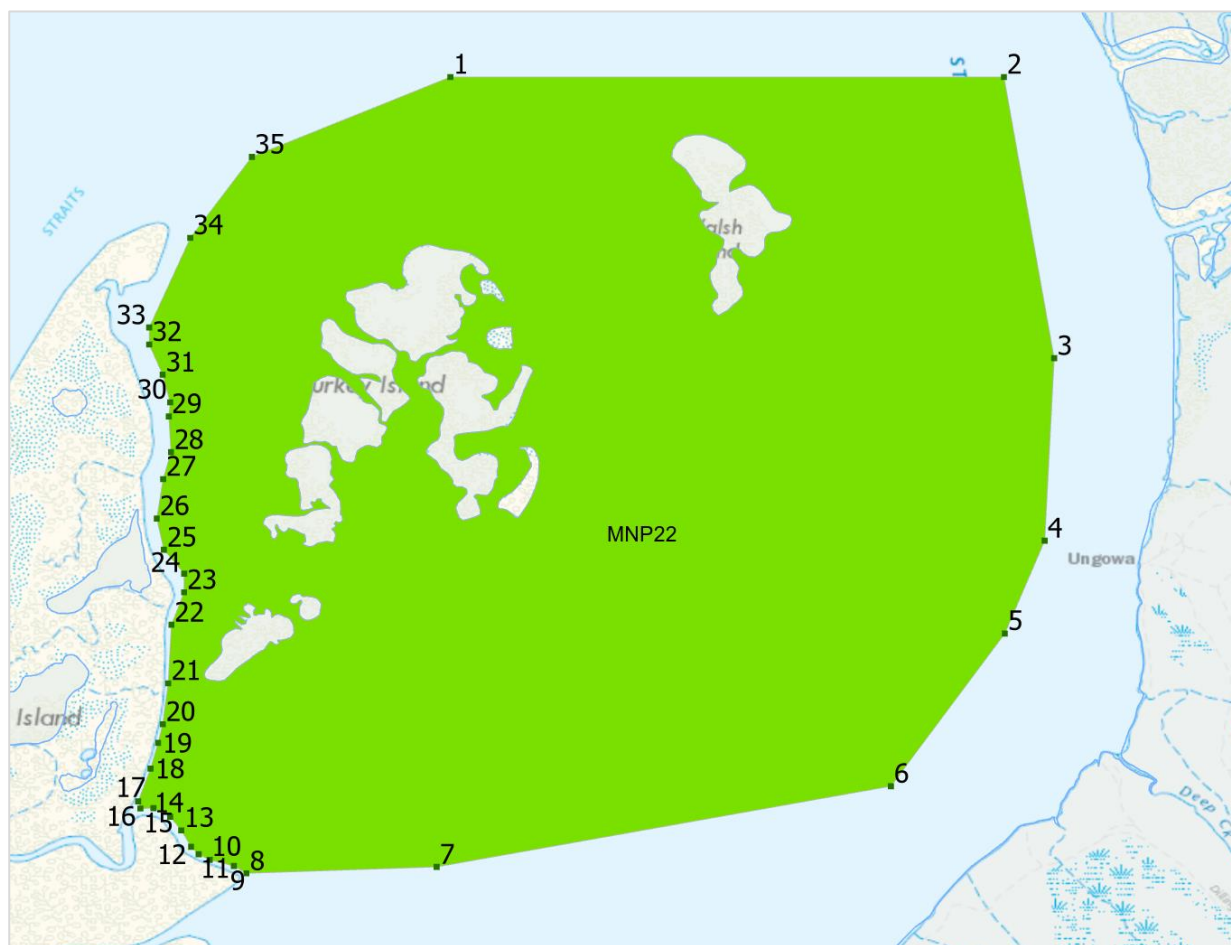
Note:

Between points 2 and 3, the boundary is the marine park outer boundary.

Between points 4 and 5, the boundary follows a line that is approximately 10m inside the mangrove forest from the north banks of Bunya Creek and Susan River.

Between points 5 and 1, the boundary is the marine park outer boundary.

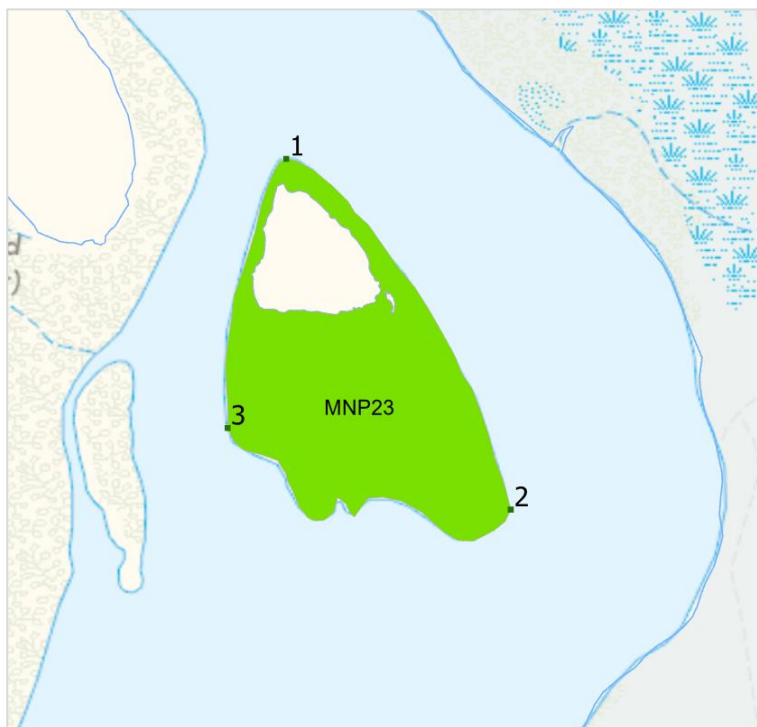
MNP22: Turkey, Bookar, Walsh Islands



Coord inate	Zone	Zone name	Latitude (DDM)	Longitude (DDM)	Latitude (DD)	Longitude (DD)
1	MNP22	Turkey, Bookar, Walsh Islands	25°28.41'S	152°57.0'E	-25.4735	152.95
2	MNP22	Turkey, Bookar, Walsh Islands	25°28.41'S	152°58.818'E	-25.4735	152.9803
3	MNP22	Turkey, Bookar, Walsh Islands	25°29.333'S	152°58.983'E	-25.488883	152.98305
4	MNP22	Turkey, Bookar, Walsh Islands	25°29.932'S	152°58.952'E	-25.498867	152.982533
5	MNP22	Turkey, Bookar, Walsh Islands	25°30.237'S	152°58.821'E	-25.50395	152.98035
6	MNP22	Turkey, Bookar, Walsh Islands	25°30.738'S	152°58.447'E	-25.5123	152.974117
7	MNP22	Turkey, Bookar, Walsh Islands	25°31.003'S	152°56.955'E	-25.516717	152.94925
8	MNP22	Turkey, Bookar, Walsh Islands	25°31.024'S	152°56.33'E	-25.517067	152.938833
9	MNP22	Turkey, Bookar, Walsh Islands	25°31.0'S	152°56.289'E	-25.516667	152.93815
10	MNP22	Turkey, Bookar, Walsh Islands	25°30.98'S	152°56.209'E	-25.516333	152.936817
11	MNP22	Turkey, Bookar, Walsh Islands	25°30.962'S	152°56.173'E	-25.516033	152.936217
12	MNP22	Turkey, Bookar, Walsh Islands	25°30.937'S	152°56.148'E	-25.515617	152.9358
13	MNP22	Turkey, Bookar, Walsh Islands	25°30.883'S	152°56.116'E	-25.514717	152.935267
14	MNP22	Turkey, Bookar, Walsh Islands	25°30.838'S	152°56.078'E	-25.513967	152.934633
15	MNP22	Turkey, Bookar, Walsh Islands	25°30.81'S	152°56.025'E	-25.5135	152.93375
16	MNP22	Turkey, Bookar, Walsh Islands	25°30.811'S	152°55.982'E	-25.513517	152.933033
17	MNP22	Turkey, Bookar, Walsh Islands	25°30.788'S	152°55.975'E	-25.513133	152.932917
18	MNP22	Turkey, Bookar, Walsh Islands	25°30.68'S	152°56.015'E	-25.511333	152.933583
19	MNP22	Turkey, Bookar, Walsh Islands	25°30.596'S	152°56.04'E	-25.509933	152.934

Coordinate	Zone	Zone name	Latitude (DDM)	Longitude (DDM)	Latitude (DD)	Longitude (DD)
20	MNP22	Turkey, Bookar, Walsh Islands	25°30.535'S	152°56.055'E	-25.508917	152.93425
21	MNP22	Turkey, Bookar, Walsh Islands	25°30.4'S	152°56.073'E	-25.506667	152.93455
22	MNP22	Turkey, Bookar, Walsh Islands	25°30.208'S	152°56.084'E	-25.503467	152.934733
23	MNP22	Turkey, Bookar, Walsh Islands	25°30.102'S	152°56.125'E	-25.5017	152.935417
24	MNP22	Turkey, Bookar, Walsh Islands	25°30.04'S	152°56.126'E	-25.500667	152.935433
25	MNP22	Turkey, Bookar, Walsh Islands	25°29.962'S	152°56.059'E	-25.499367	152.934317
26	MNP22	Turkey, Bookar, Walsh Islands	25°29.86'S	152°56.036'E	-25.497667	152.933933
27	MNP22	Turkey, Bookar, Walsh Islands	25°29.73'S	152°56.057'E	-25.4955	152.934283
28	MNP22	Turkey, Bookar, Walsh Islands	25°29.642'S	152°56.082'E	-25.494033	152.9347
29	MNP22	Turkey, Bookar, Walsh Islands	25°29.524'S	152°56.075'E	-25.492067	152.934583
30	MNP22	Turkey, Bookar, Walsh Islands	25°29.478'S	152°56.08'E	-25.4913	152.934667
31	MNP22	Turkey, Bookar, Walsh Islands	25°29.387'S	152°56.055'E	-25.489783	152.93425
32	MNP22	Turkey, Bookar, Walsh Islands	25°29.288'S	152°56.011'E	-25.488133	152.933517
33	MNP22	Turkey, Bookar, Walsh Islands	25°29.232'S	152°56.011'E	-25.4872	152.933517
34	MNP22	Turkey, Bookar, Walsh Islands	25°28.938'S	152°56.146'E	-25.4823	152.935767
35	MNP22	Turkey, Bookar, Walsh Islands	25°28.672'S	152°56.348'E	-25.477867	152.939133

MNP23: Garrys Anchorage

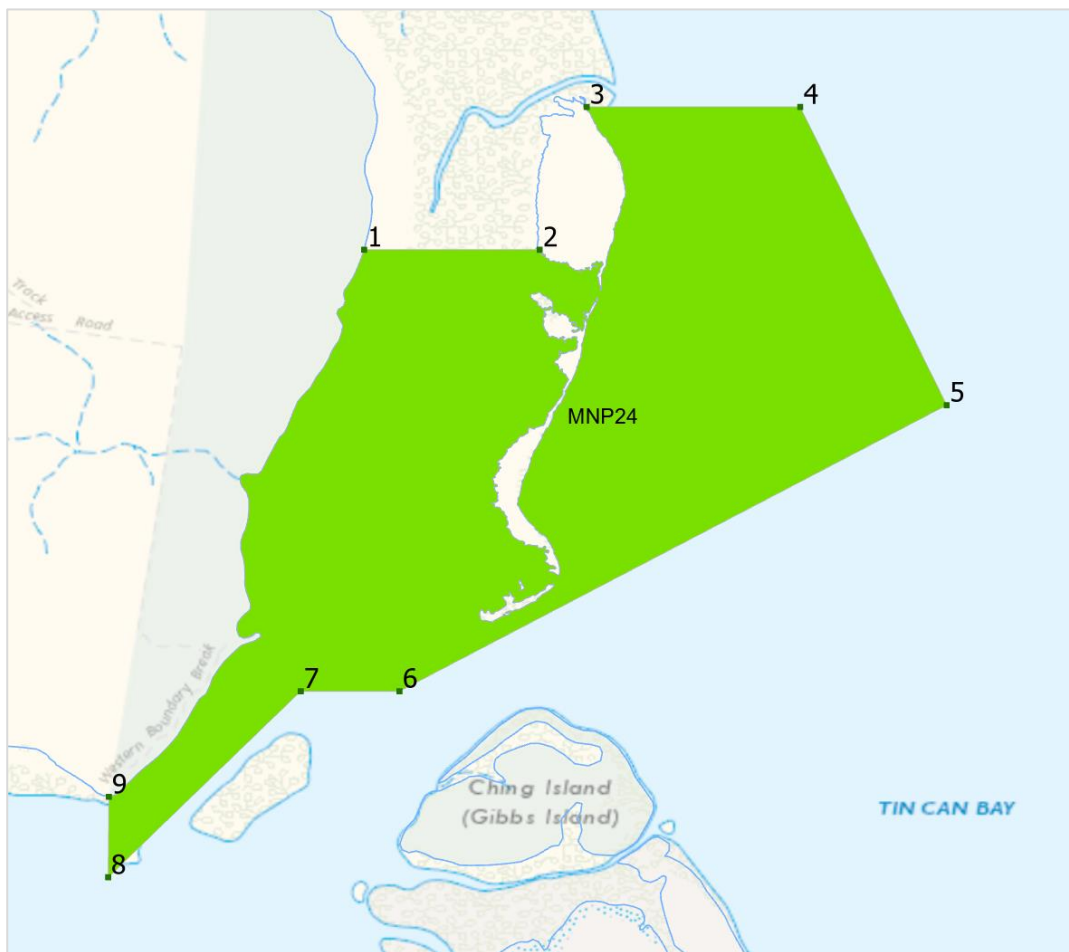


Coord inate	Zone	Zone name	Latitude (DDM)	Longitude (DDM)	Latitude (DD)	Longitude (DD)
1	MNP23	Garrys Anchorage	25°37.228'S	152°57.959'E	-25.620467	152.965981
2	MNP23	Garrys Anchorage	25°37.671'S	152°58.243'E	-25.627856	152.97071
3	MNP23	Garrys Anchorage	25°37.568'S	152°57.885'E	-25.626138	152.964745

Note:

The boundary of zone MNP23 follows the mangrove line of the unnamed mangrove island that lies east of Stewart Island (Coonangoor). The points listed are provided as an indicative location of the zone.

MNP24: Cowra Point



Coord inate	Zone	Zone name	Latitude (DDM)	Longitude (DDM)	Latitude (DD)	Longitude (DD)
1	MNP24	Cowra Point	25°46.69'S	152°58.515'E	-25.778167	152.975251
2	MNP24	Cowra Point	25°46.69'S	152°58.957'E	-25.778167	152.982624
3	MNP24	Cowra Point	25°46.33'S	152°59.076'E	-25.772167	152.984595
4	MNP24	Cowra Point	25°46.33'S	152°59.614'E	-25.772167	152.993567
5	MNP24	Cowra Point	25°47.082'S	152°59.983'E	-25.7847	152.999717
6	MNP24	Cowra Point	25°47.803'S	152°58.604'E	-25.796717	152.976733
7	MNP24	Cowra Point	25°47.803'S	152°58.355'E	-25.796717	152.972583
8	MNP24	Cowra Point	25°48.272'S	152°57.87'E	-25.804533	152.9645
9	MNP24	Cowra Point	25°48.069'S	152°57.872'E	-25.801152	152.964529

Note:

Between points 2 and 3, the boundary is the marine park outer boundary.

Between points 9 and 1, the boundary is the marine park outer boundary.

MNP25: Kauri Creek

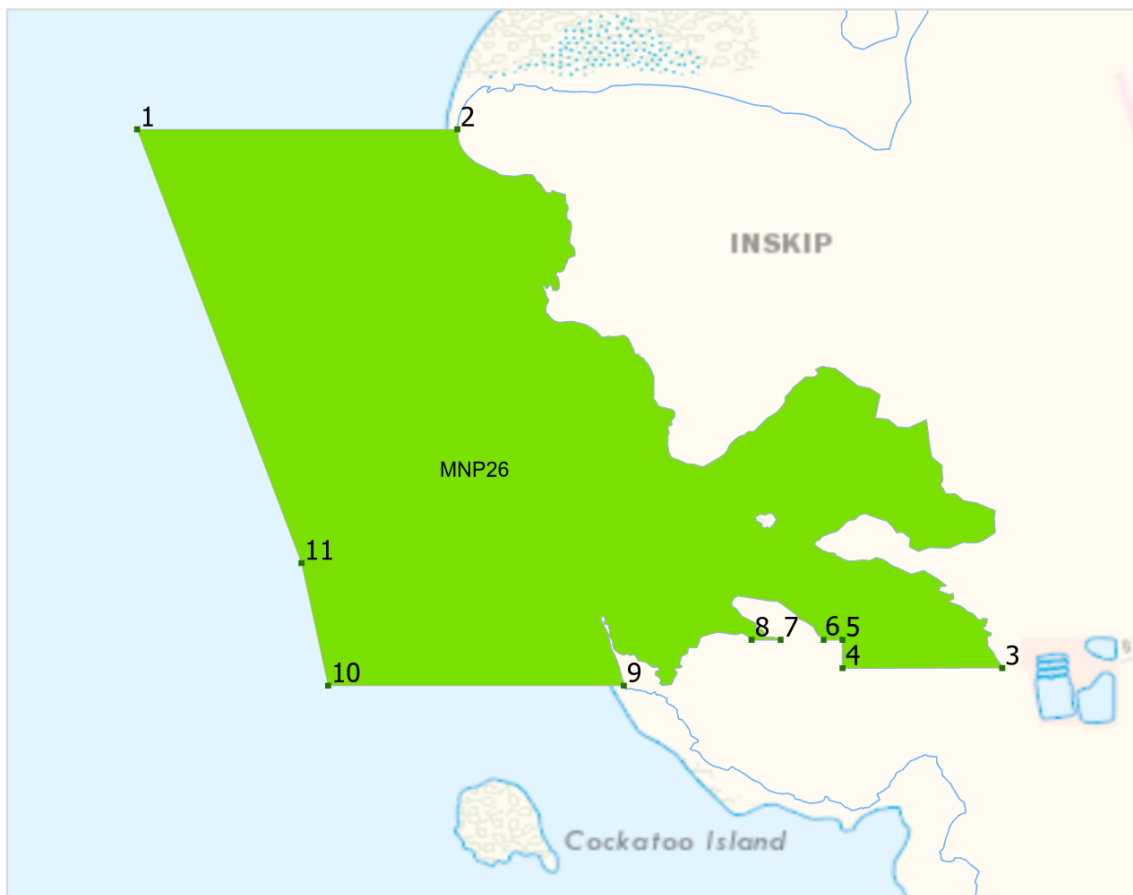


Coordinate	Zone	Zone name	Latitude (DDM)	Longitude (DDM)	Latitude (DD)	Longitude (DD)
1	MNP25	Kauri Creek	25°48.663'S	152°55.455'E	-25.811052	152.92425
2	MNP25	Kauri Creek	25°48.92'S	152°55.455'E	-25.815326	152.92425

Note:

Between points 2 and 1, the boundary is the marine park outer boundary.

MNP26: Myers Creek

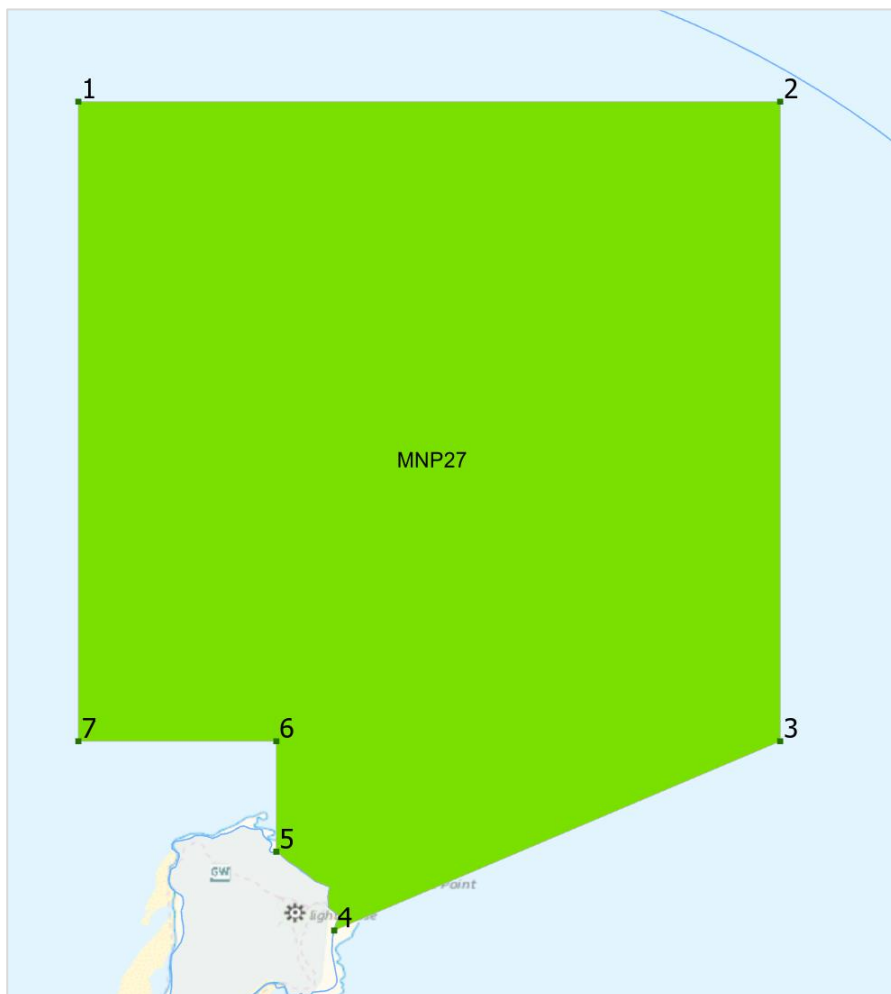


Coord inate	Zone	Zone name	Latitude (DDM)	Longitude (DDM)	Latitude (DD)	Longitude (DD)
1	MNP26	Myers Creek	25°50.97'S	153°2.2'E	-25.8495	153.036667
2	MNP26	Myers Creek	25°50.97'S	153°2.812'E	-25.8495	153.046862
3	MNP26	Myers Creek	25°51.999'S	153°3.853'E	-25.866642	153.064209
4	MNP26	Myers Creek	25°51.999'S	153°3.547'E	-25.866645	153.059124
5	MNP26	Myers Creek	25°51.944'S	153°3.547'E	-25.865742	153.059124
6	MNP26	Myers Creek	25°51.945'S	153°3.511'E	-25.865742	153.058523
7	MNP26	Myers Creek	25°51.945'S	153°3.429'E	-25.865742	153.057156
8	MNP26	Myers Creek	25°51.945'S	153°3.374'E	-25.865743	153.056232
9	MNP26	Myers Creek	25°52.032'S	153°3.13'E	-25.8672	153.052162
10	MNP26	Myers Creek	25°52.032'S	153°2.565'E	-25.8672	153.04275
11	MNP26	Myers Creek	25°51.798'S	153°2.514'E	-25.8633	153.0419

Note:

Between points 2 and 9, the boundary is the marine park outer boundary.

MNP27: Wolf Rock

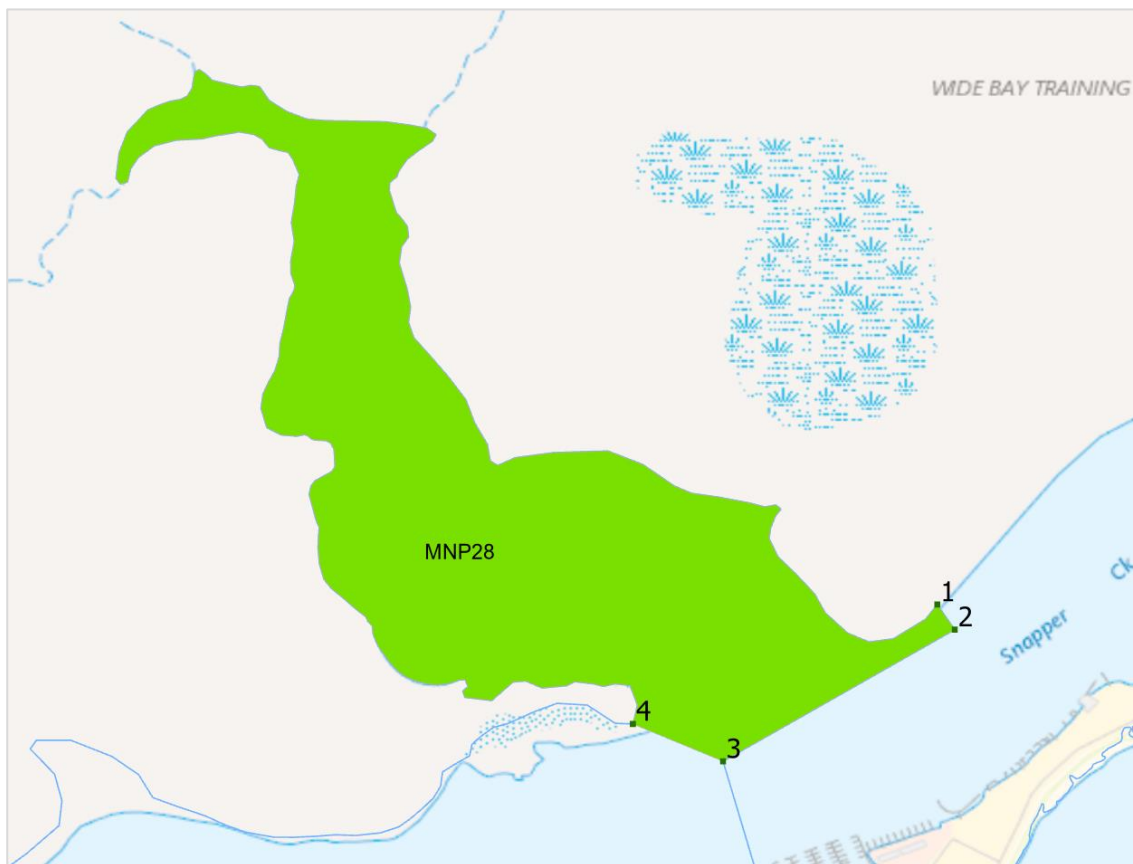


Coord inate	Zone	Zone name	Latitude (DDM)	Longitude (DDM)	Latitude (DD)	Longitude (DD)
1	MNP27	Wolf Rock	25°53.166'S	153°10.6'E	-25.8861	153.176667
2	MNP27	Wolf Rock	25°53.166'S	153°13.0'E	-25.8861	153.216667
3	MNP27	Wolf Rock	25°55.353'S	153°13.0'E	-25.92255	153.216667
4	MNP27	Wolf Rock	25°56.0'S	153°11.475'E	-25.933333	153.191246
5	MNP27	Wolf Rock	25°55.731'S	153°11.277'E	-25.928844	153.18795
6	MNP27	Wolf Rock	25°55.353'S	153°11.277'E	-25.92255	153.18795
7	MNP27	Wolf Rock	25°55.353'S	153°10.6'E	-25.92255	153.176667

Note:

Between points 4 and 5, the boundary is the marine park outer boundary.

MNP28: Griffen Creek



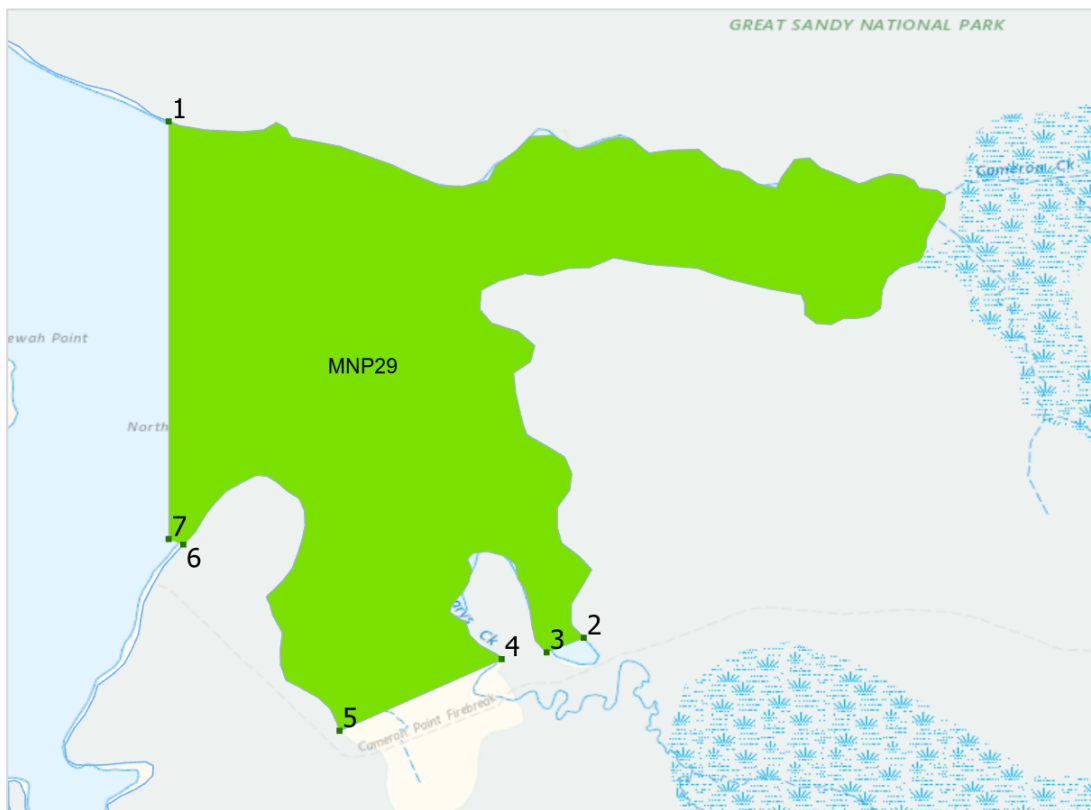
Coord inate	Zone	Zone name	Latitude (DDM)	Longitude (DDM)	Latitude (DD)	Longitude (DD)
1	MNP28	Griffen Creek	25°54.065'S	153°0.514'E	-25.901081	153.008563
2	MNP28	Griffen Creek	25°54.096'S	153°0.536'E	-25.901608	153.00893
3	MNP28	Griffen Creek	25°54.262'S	153°0.244'E	-25.904372	153.004063
4	MNP28	Griffen Creek	25°54.215'S	153°0.13'E	-25.903589	153.002167

Note:

Points 1 to 3 align with Snapper Creek Boat Harbour (a State managed boat harbour under the Transport Infrastructure Act 1994).

Between points 4 and 1, the boundary is the marine park outer boundary.

MNP29: Searys Creek

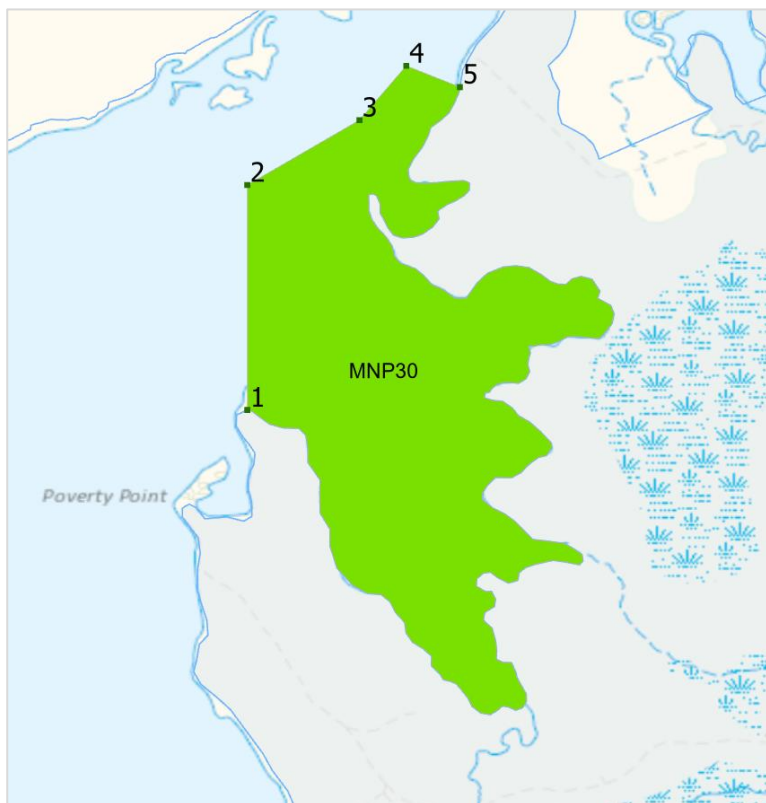


Coord inate	Zone	Zone name	Latitude (DDM)	Longitude (DDM)	Latitude (DD)	Longitude (DD)
1	MNP29	Searys Creek	25°55.6'S	153°2.22'E	-25.926663	153.037
2	MNP29	Searys Creek	25°56.515'S	153°2.955'E	-25.941917	153.049252
3	MNP29	Searys Creek	25°56.541'S	153°2.889'E	-25.94235	153.048156
4	MNP29	Searys Creek	25°56.553'S	153°2.81'E	-25.94255	153.046829
5	MNP29	Searys Creek	25°56.68'S	153°2.523'E	-25.944667	153.042044
6	MNP29	Searys Creek	25°56.35'S	153°2.246'E	-25.939167	153.03743
7	MNP29	Searys Creek	25°56.34'S	153°2.22'E	-25.939	153.037

Note:

Between points 1 and 6, the boundary is the marine park outer boundary.

MNP30: Cooloola Creek

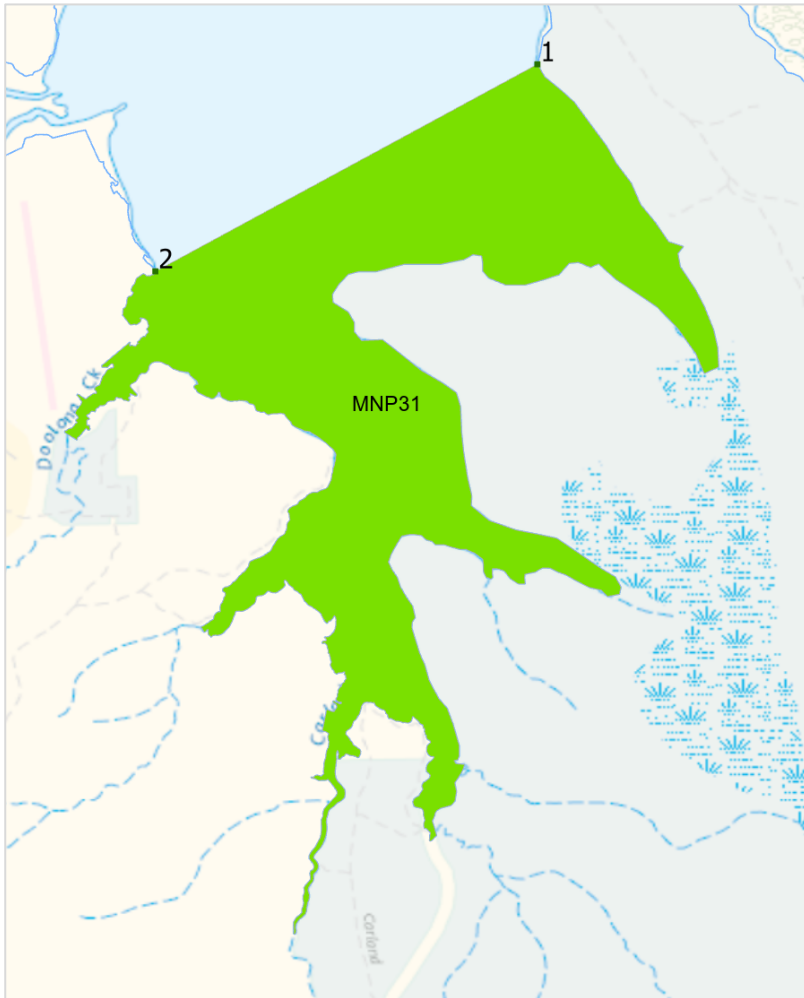


Coord inate	Zone	Zone name	Latitude (DDM)	Longitude (DDM)	Latitude (DD)	Longitude (DD)
1	MNP30	Cooloola Creek	25°57.318'S	153°1.628'E	-25.955298	153.027133
2	MNP30	Cooloola Creek	25°56.746'S	153°1.628'E	-25.945767	153.027133
3	MNP30	Cooloola Creek	25°56.581'S	153°1.913'E	-25.943017	153.031883
4	MNP30	Cooloola Creek	25°56.443'S	153°2.032'E	-25.940717	153.033867
5	MNP30	Cooloola Creek	25°56.497'S	153°2.168'E	-25.941617	153.036138

Note:

Between points 5 and 1, the boundary is the marine park outer boundary.

MNP31: Carland Creek



Coordinate	Zone	Zone name	Latitude (DDM)	Longitude (DDM)	Latitude (DD)	Longitude (DD)
1	MNP31	Carland Creek	25°57.983'S	153°1.492'E	-25.966383	153.024859
2	MNP31	Carland Creek	25°58.51'S	153°0.519'E	-25.975167	153.008652

Note:

Between points 1 and 2, the boundary is the marine park outer boundary.
