

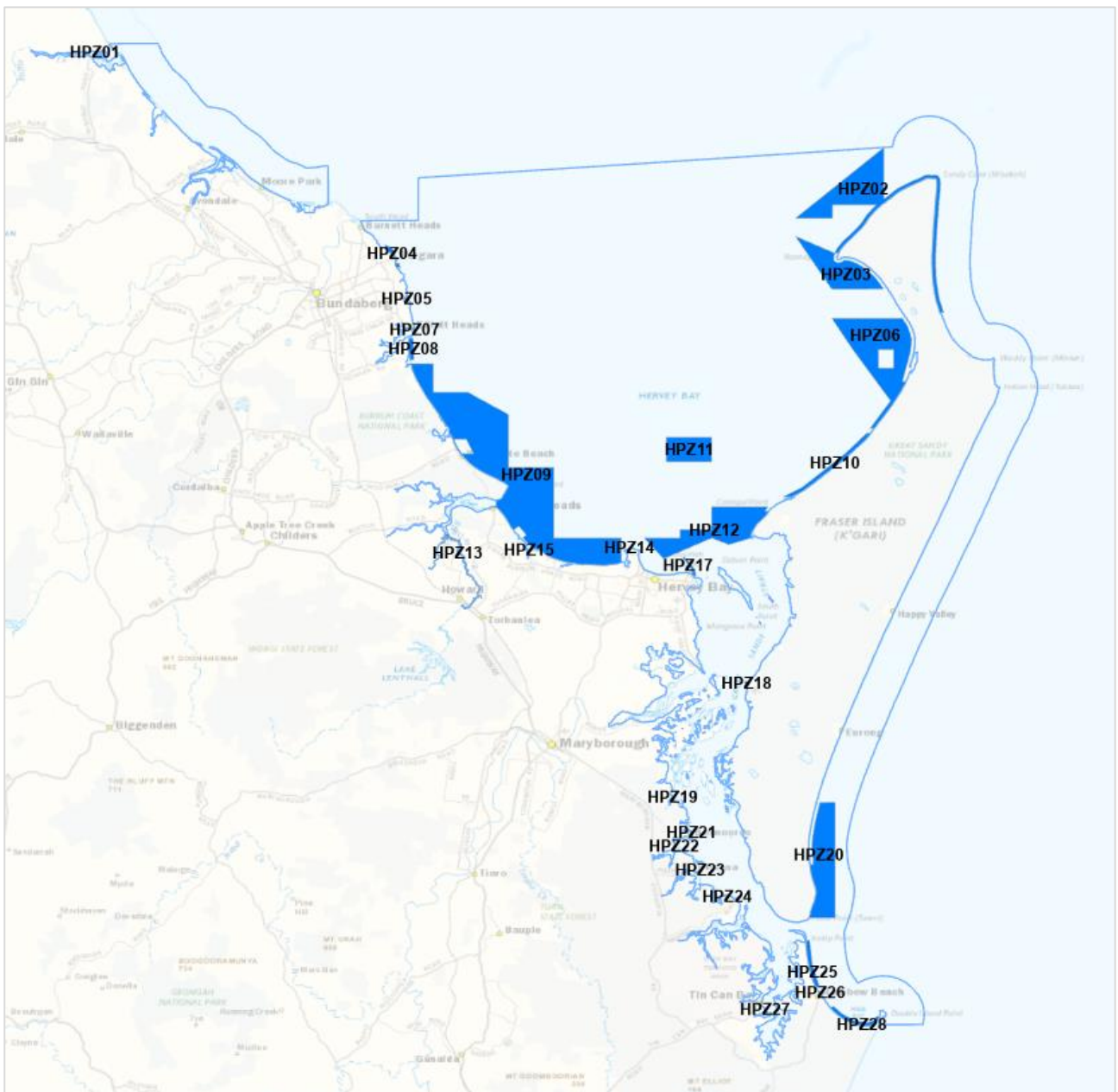
# Great Sandy Marine Park

## Zones to be included in Final Zoning Plan

2023

### Habitat Protection Zone (HPZ) coordinates

Coordinates are listed in a clockwise direction, starting at the north-west coordinate (top left) of each zone/area where practical.



## HPZ01: Flat Rock



Coord inate	Zone	Zone name	Latitude (DDM)	Longitude (DDM)	Latitude (DD)	Longitude (DD)
1	HPZ01	Flat Rock	24°30.653'S	152°1.277'E	-24.510876	152.021283
2	HPZ01	Flat Rock	24°30.674'S	152°1.326'E	-24.511234	152.0221
3	HPZ01	Flat Rock	24°30.708'S	152°1.326'E	-24.5118	152.0221
4	HPZ01	Flat Rock	24°30.708'S	152°1.277'E	-24.5118	152.021283

### Note:

Between points 1 and 2, the boundary is the marine park outer boundary.

Points 2 to 4 and points 4 to 1 align with the proposed revision of the Baffle Creek declared Fish Habitat Area.

## HPZ02: Sandy Cape



Coord inate	Zone	Zone name	Latitude (DDM)	Longitude (DDM)	Latitude (DD)	Longitude (DD)
1	HPZ02	Sandy Cape	24°39.115'S	153°11.3'E	-24.651923	153.188333
2	HPZ02	Sandy Cape	24°43.691'S	153°11.3'E	-24.728182	153.188333
3	HPZ02	Sandy Cape	24°53.777'S	153°16.634'E	-24.896283	153.277238
4	HPZ02	Sandy Cape	24°53.777'S	153°16.28'E	-24.896283	153.27133
5	HPZ02	Sandy Cape	24°48.501'S	153°7.262'E	-24.80835	153.121032
6	HPZ02	Sandy Cape	24°48.501'S	153°6.945'E	-24.80835	153.115751
7	HPZ02	Sandy Cape	24°44.2'S	153°10.645'E	-24.736667	153.177421
8	HPZ02	Sandy Cape	24°44.2'S	153°6.726'E	-24.736667	153.1121
9	HPZ02	Sandy Cape	24°45.4'S	153°6.726'E	-24.756667	153.1121
10	HPZ02	Sandy Cape	24°45.4'S	153°3.45'E	-24.756667	153.0575

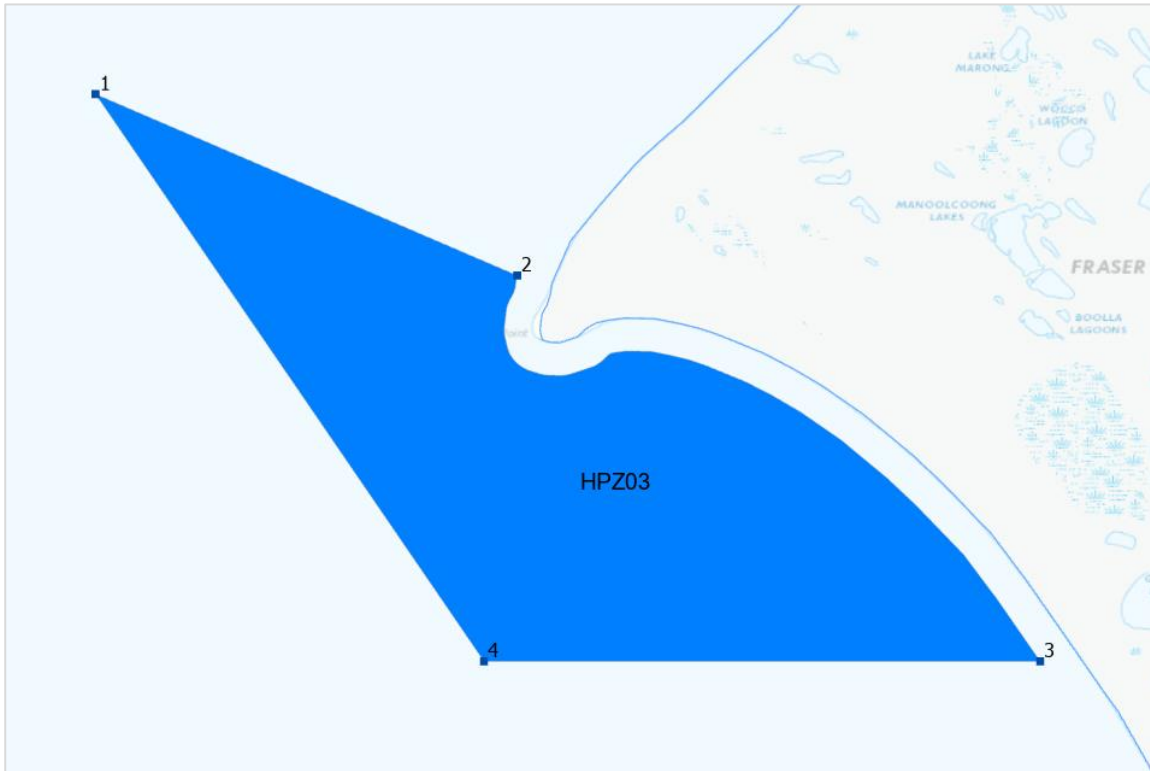
### Note:

Between points 2 and 3, the boundary is defined by a 500m coastal line, which is the imaginary line, every point of which is 500m seaward from the marine park boundary.

Between points 4 and 5, the boundary is the marine park outer boundary.

Between points 6 and 7, the boundary is defined by a 500m coastal line, which is the imaginary line, every point of which is 500m seaward from the marine park boundary.

## HPZ03: Rooney Point

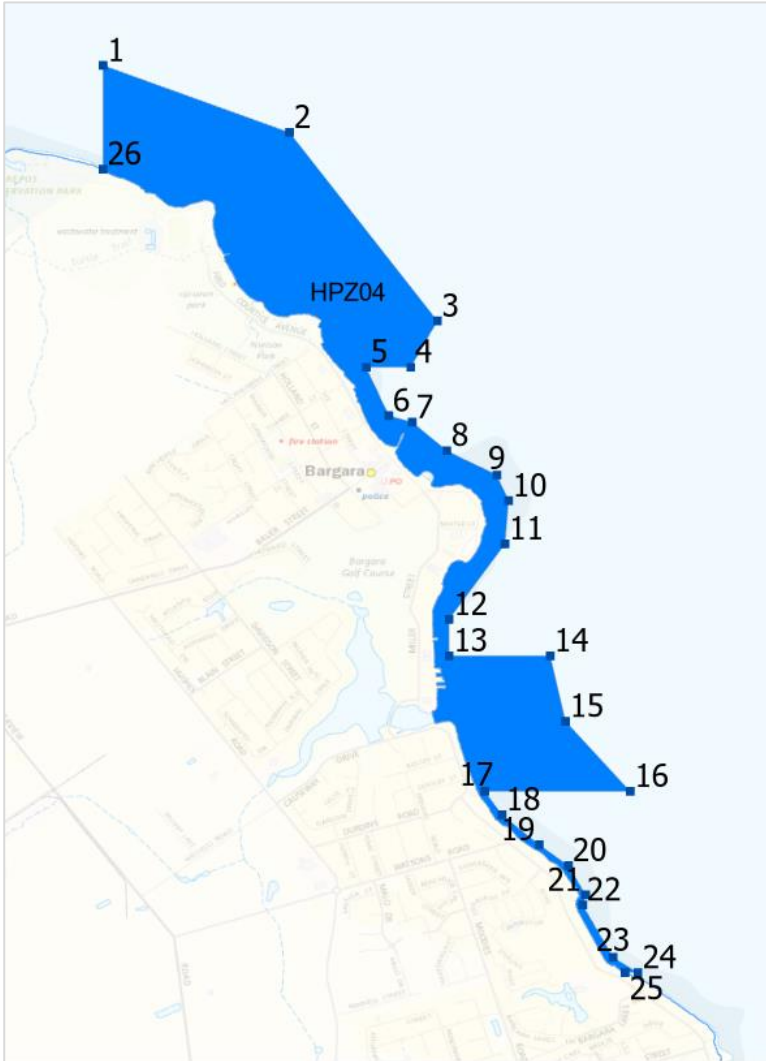


Coord inate	Zone	Zone name	Latitude (DDM)	Longitude (DDM)	Latitude (DD)	Longitude (DD)
1	HPZ03	Rooney Point	24°47.0'S	153°3.45'E	-24.783333	153.0575
2	HPZ03	Rooney Point	24°48.501'S	153°6.945'E	-24.80835	153.115751
3	HPZ03	Rooney Point	24°51.696'S	153°11.282'E	-24.8616	153.18803
4	HPZ03	Rooney Point	24°51.696'S	153°6.67'E	-24.8616	153.111167

### Note:

Between points 2 and 3, the boundary is defined by a 500m coastal line, which is the imaginary line, every point of which is 500m seaward from the marine park boundary.

HPZ04: Bargara



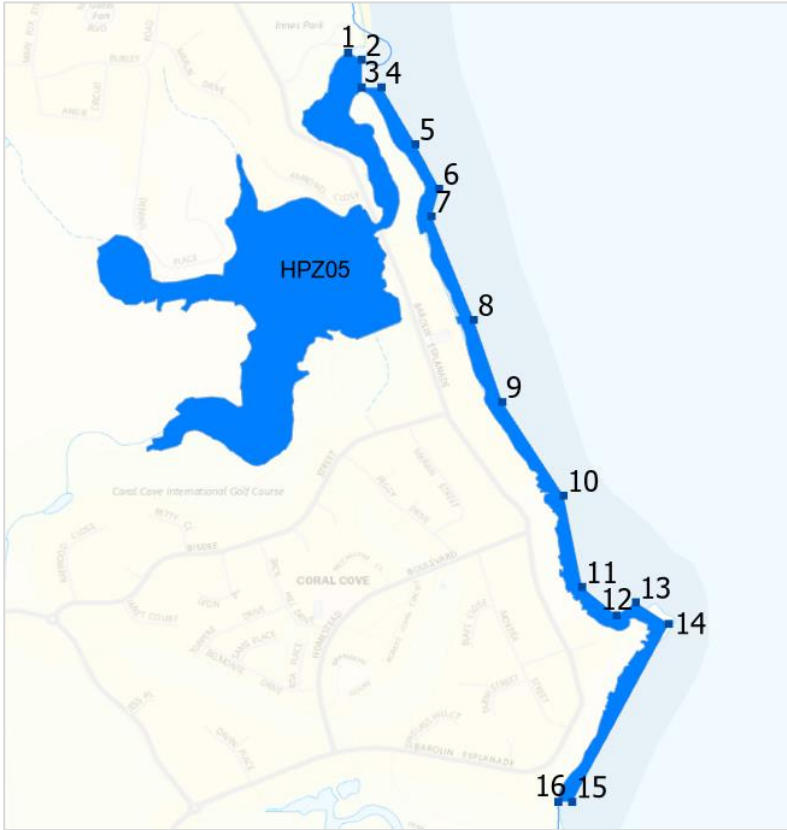
Coord inate	Zone	Zone name	Latitude (DDM)	Longitude (DDM)	Latitude (DD)	Longitude (DD)
1	HPZ04	Bargara	24°47.777'S	152°27.046'E	-24.796283	152.450767
2	HPZ04	Bargara	24°47.961'S	152°27.557'E	-24.79935	152.459283
3	HPZ04	Bargara	24°48.477'S	152°27.962'E	-24.80795	152.466033
4	HPZ04	Bargara	24°48.604'S	152°27.889'E	-24.810067	152.464817
5	HPZ04	Bargara	24°48.604'S	152°27.767'E	-24.810067	152.462783
6	HPZ04	Bargara	24°48.736'S	152°27.829'E	-24.812267	152.463817
7	HPZ04	Bargara	24°48.754'S	152°27.893'E	-24.812567	152.464883
8	HPZ04	Bargara	24°48.832'S	152°27.988'E	-24.813867	152.466467
9	HPZ04	Bargara	24°48.899'S	152°28.125'E	-24.814983	152.46875
10	HPZ04	Bargara	24°48.969'S	152°28.157'E	-24.81615	152.469283
11	HPZ04	Bargara	24°49.088'S	152°28.147'E	-24.818128	152.469117
12	HPZ04	Bargara	24°49.294'S	152°27.994'E	-24.821567	152.466567
13	HPZ04	Bargara	24°49.394'S	152°27.994'E	-24.823233	152.466567
14	HPZ04	Bargara	24°49.394'S	152°28.271'E	-24.823233	152.471183
15	HPZ04	Bargara	24°49.573'S	152°28.313'E	-24.826217	152.471883
16	HPZ04	Bargara	24°49.765'S	152°28.49'E	-24.829417	152.474833
17	HPZ04	Bargara	24°49.765'S	152°28.092'E	-24.829417	152.4682

Coordinate	Zone	Zone name	Latitude (DDM)	Longitude (DDM)	Latitude (DD)	Longitude (DD)
18	HPZ04	Bargara	24°49.829'S	152°28.139'E	-24.830483	152.468983
19	HPZ04	Bargara	24°49.911'S	152°28.241'E	-24.83185	152.470683
20	HPZ04	Bargara	24°49.968'S	152°28.321'E	-24.8328	152.472017
21	HPZ04	Bargara	24°50.048'S	152°28.368'E	-24.834133	152.4728
22	HPZ04	Bargara	24°50.076'S	152°28.36'E	-24.8346	152.472667
23	HPZ04	Bargara	24°50.219'S	152°28.443'E	-24.836983	152.47405
24	HPZ04	Bargara	24°50.261'S	152°28.511'E	-24.837683	152.475183
25	HPZ04	Bargara	24°50.261'S	152°28.476'E	-24.837683	152.474594
26	HPZ04	Bargara	24°48.061'S	152°27.046'E	-24.801022	152.450767

Note:

Between points 25 and 26, the boundary is the marine park outer boundary.

**HPZ05: Coral Cove**



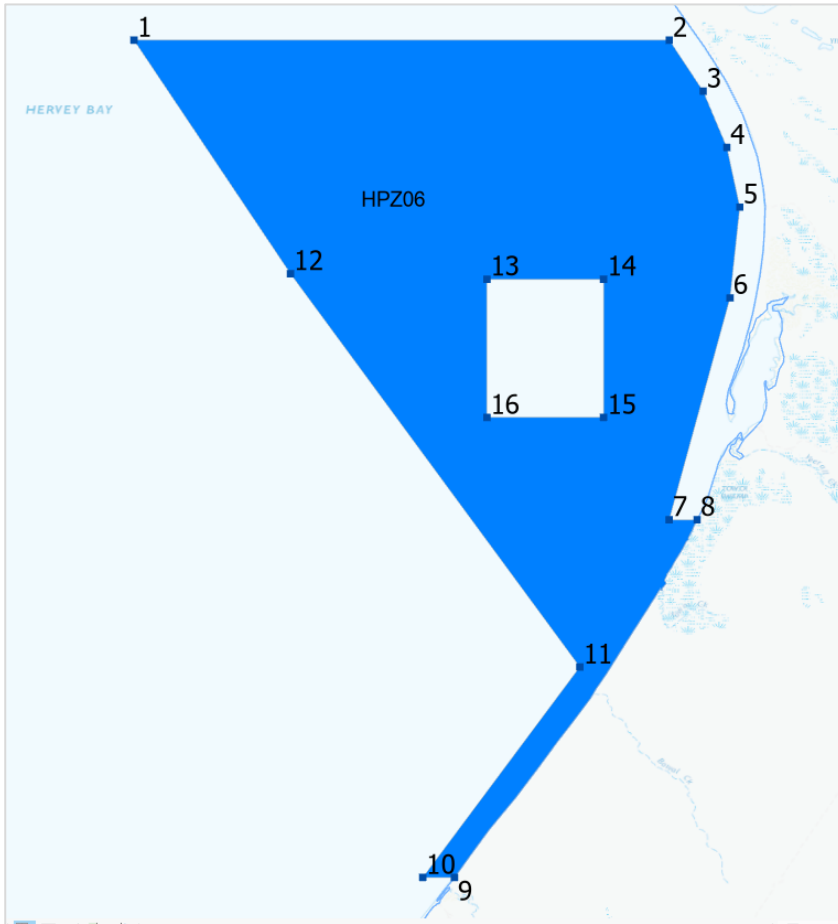
Coord inate	Zone	Zone name	Latitude (DDM)	Longitude (DDM)	Latitude (DD)	Longitude (DD)
1	HPZ05	Coral Cove	24°52.226'S	152°28.968'E	-24.870431	152.482804
2	HPZ05	Coral Cove	24°52.235'S	152°28.986'E	-24.870581	152.4831
3	HPZ05	Coral Cove	24°52.271'S	152°28.986'E	-24.871183	152.4831
4	HPZ05	Coral Cove	24°52.271'S	152°29.012'E	-24.871183	152.483533
5	HPZ05	Coral Cove	24°52.345'S	152°29.056'E	-24.872417	152.484267
6	HPZ05	Coral Cove	24°52.403'S	152°29.087'E	-24.873383	152.484783
7	HPZ05	Coral Cove	24°52.439'S	152°29.077'E	-24.873983	152.484617
8	HPZ05	Coral Cove	24°52.574'S	152°29.132'E	-24.876233	152.485533
9	HPZ05	Coral Cove	24°52.681'S	152°29.169'E	-24.878017	152.48615
10	HPZ05	Coral Cove	24°52.803'S	152°29.249'E	-24.88005	152.487483
11	HPZ05	Coral Cove	24°52.922'S	152°29.273'E	-24.882033	152.487883
12	HPZ05	Coral Cove	24°52.959'S	152°29.318'E	-24.88265	152.488633
13	HPZ05	Coral Cove	24°52.942'S	152°29.343'E	-24.882367	152.48905
14	HPZ05	Coral Cove	24°52.97'S	152°29.386'E	-24.882833	152.489767
15	HPZ05	Coral Cove	24°53.202'S	152°29.26'E	-24.8867	152.487667
16	HPZ05	Coral Cove	24°53.202'S	152°29.242'E	-24.8867	152.487366

Note:

Between points 1 and 2, the boundary is the marine park outer boundary.

Between points 16 and 1, the boundary is the marine park outer boundary.

## HPZ06: Platypus Bay



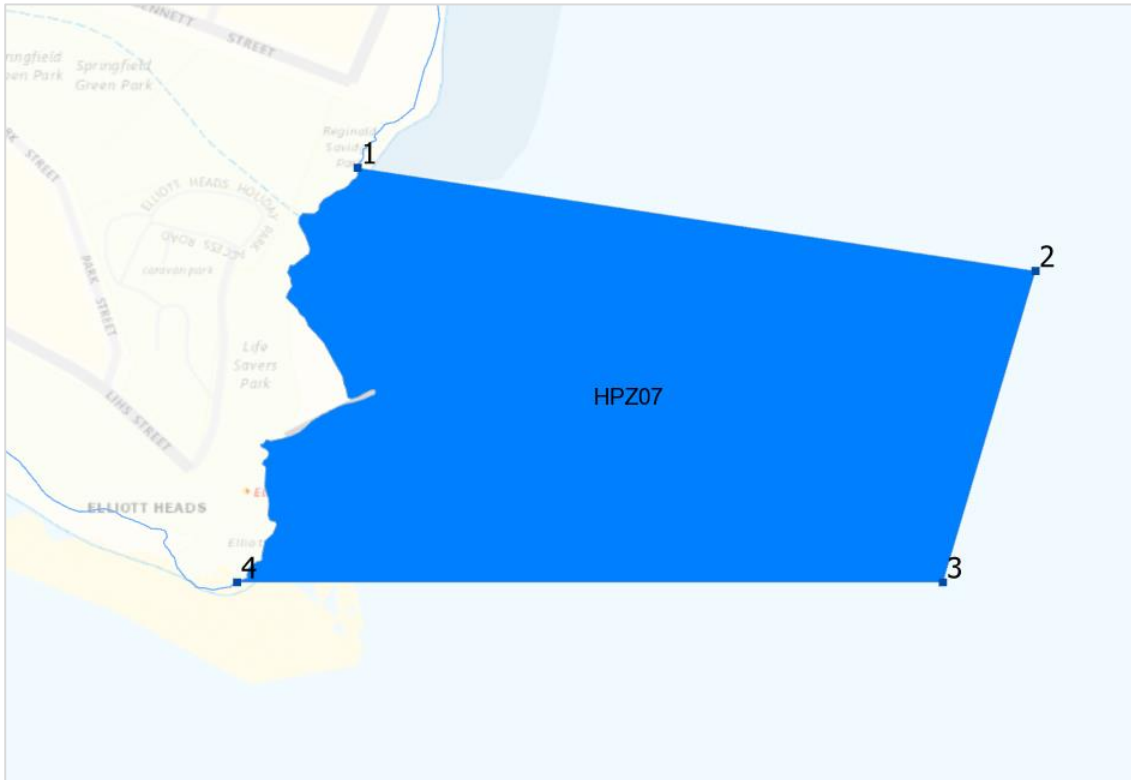
Coord inate	Zone	Zone name	Latitude (DDM)	Longitude (DDM)	Latitude (DD)	Longitude (DD)
1	HPZ06	Platypus Bay	24°54.27'S	153°6.67'E	-24.9045	153.111167
2	HPZ06	Platypus Bay	24°54.27'S	153°12.93'E	-24.9045	153.2155
3	HPZ06	Platypus Bay	24°54.867'S	153°13.326'E	-24.91445	153.2221
4	HPZ06	Platypus Bay	24°55.524'S	153°13.603'E	-24.9254	153.226717
5	HPZ06	Platypus Bay	24°56.222'S	153°13.754'E	-24.937033	153.229233
6	HPZ06	Platypus Bay	24°57.282'S	153°13.64'E	-24.9547	153.227333
7	HPZ06	Platypus Bay	24°59.875'S	153°12.928'E	-24.997917	153.215467
8	HPZ06	Platypus Bay	24°59.875'S	153°13.255'E	-24.997917	153.220921
9	HPZ06	Platypus Bay	25°4.054'S	153°10.417'E	-25.067567	153.173613
10	HPZ06	Platypus Bay	25°4.054'S	153°10.048'E	-25.067567	153.167467
11	HPZ06	Platypus Bay	25°1.594'S	153°11.884'E	-25.026567	153.198067
12	HPZ06	Platypus Bay	24°57.0'S	153°8.501'E	-24.95	153.141683
13	HPZ06	Platypus Bay	24°57.065'S	153°10.797'E	-24.951083	153.17995
14	HPZ06	Platypus Bay	24°57.065'S	153°12.162'E	-24.951083	153.2027
15	HPZ06	Platypus Bay	24°58.678'S	153°12.162'E	-24.977967	153.2027
16	HPZ06	Platypus Bay	24°58.678'S	153°10.797'E	-24.977967	153.17995

Note:

Between points 8 and 9, the boundary is the marine park outer boundary.



## HPZ07: Elliott Heads

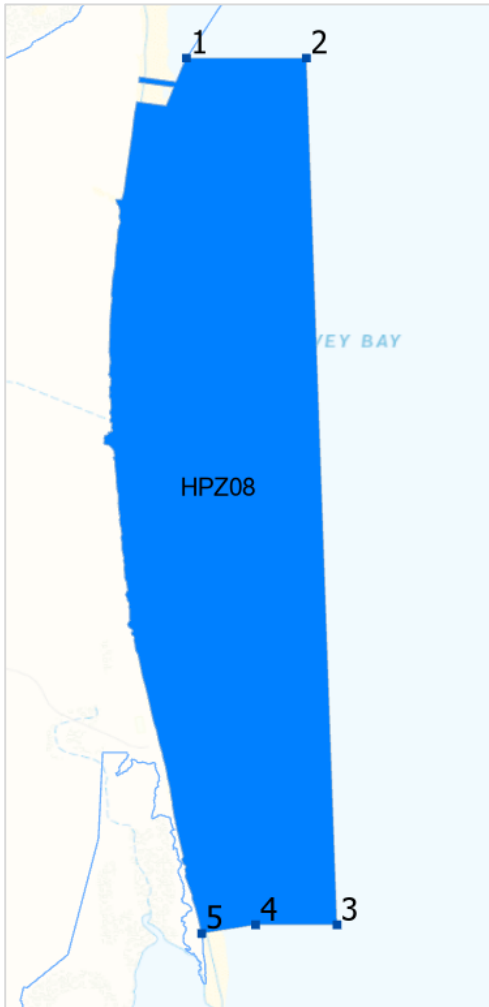


Coord inate	Zone	Zone name	Latitude (DDM)	Longitude (DDM)	Latitude (DD)	Longitude (DD)
1	HPZ07	Elliott Heads	24°55.15'S	152°29.552'E	-24.919167	152.492528
2	HPZ07	Elliott Heads	24°55.199'S	152°29.874'E	-24.919983	152.4979
3	HPZ07	Elliott Heads	24°55.347'S	152°29.83'E	-24.92245	152.497167
4	HPZ07	Elliott Heads	24°55.347'S	152°29.494'E	-24.92245	152.491573

Note:

Between points 4 and 1, the boundary is the marine park outer boundary.

**HPZ08: Kinkuna**



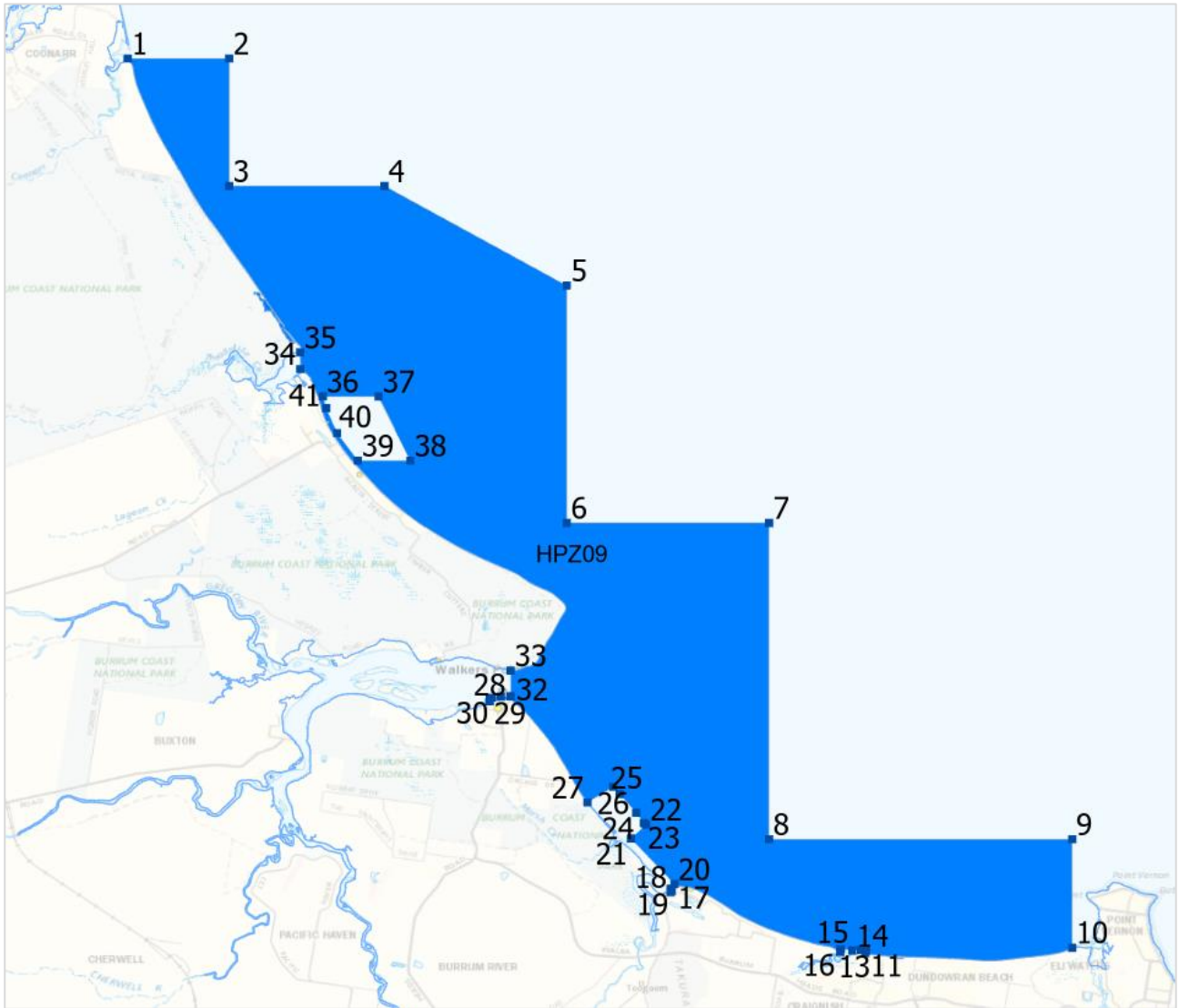
Coord inate	Zone	Zone name	Latitude (DDM)	Longitude (DDM)	Latitude (DD)	Longitude (DD)
1	HPZ08	Kinkuna	24°56.044'S	152°29.278'E	-24.934067	152.487966
2	HPZ08	Kinkuna	24°56.044'S	152°29.54'E	-24.934067	152.492333
3	HPZ08	Kinkuna	24°57.942'S	152°29.607'E	-24.965694	152.49345
4	HPZ08	Kinkuna	24°57.942'S	152°29.429'E	-24.965694	152.490486
5	HPZ08	Kinkuna	24°57.961'S	152°29.311'E	-24.966011	152.488518

**Note:**

Points 3 to 5 align with the proposed revision of the Kinkuna declared Fish Habitat Area.

Between points 5 and 1, the boundary is the marine park outer boundary.

HPZ09: Southwestern Hervey Bay



Coord inate	Zone	Zone name	Latitude (DDM)	Longitude (DDM)	Latitude (DD)	Longitude (DD)
1	HPZ09	Southwestern Hervey Bay	24°58.31'S	152°29.31'E	-24.971833	152.488507
2	HPZ09	Southwestern Hervey Bay	24°58.31'S	152°31.316'E	-24.971833	152.521933
3	HPZ09	Southwestern Hervey Bay	25°0.834'S	152°31.316'E	-25.0139	152.521933
4	HPZ09	Southwestern Hervey Bay	25°0.834'S	152°34.389'E	-25.0139	152.57315
5	HPZ09	Southwestern Hervey Bay	25°2.806'S	152°37.998'E	-25.046767	152.6333
6	HPZ09	Southwestern Hervey Bay	25°7.5'S	152°37.998'E	-25.125	152.6333
7	HPZ09	Southwestern Hervey Bay	25°7.5'S	152°42.0'E	-25.125	152.7
8	HPZ09	Southwestern Hervey Bay	25°13.76'S	152°42.0'E	-25.229333	152.7
9	HPZ09	Southwestern Hervey Bay	25°13.76'S	152°48.0'E	-25.229333	152.8
10	HPZ09	Southwestern Hervey Bay	25°15.906'S	152°48.0'E	-25.265105	152.8
11	HPZ09	Southwestern Hervey Bay	25°16.014'S	152°43.904'E	-25.266907	152.731733
12	HPZ09	Southwestern Hervey Bay	25°15.962'S	152°43.92'E	-25.266033	152.732
13	HPZ09	Southwestern Hervey Bay	25°15.951'S	152°43.819'E	-25.26585	152.730317
14	HPZ09	Southwestern Hervey Bay	25°15.962'S	152°43.647'E	-25.266033	152.72745
15	HPZ09	Southwestern Hervey Bay	25°15.929'S	152°43.419'E	-25.265483	152.723653
16	HPZ09	Southwestern Hervey Bay	25°15.987'S	152°43.405'E	-25.266458	152.723417

Coordinate	Zone	Zone name	Latitude (DDM)	Longitude (DDM)	Latitude (DD)	Longitude (DD)
17	HPZ09	Southwestern Hervey Bay	25°14.783'S	152°40.073'E	-25.246384	152.667883
18	HPZ09	Southwestern Hervey Bay	25°14.806'S	152°40.048'E	-25.246765	152.667467
19	HPZ09	Southwestern Hervey Bay	25°14.741'S	152°40.048'E	-25.245675	152.667467
20	HPZ09	Southwestern Hervey Bay	25°14.646'S	152°40.127'E	-25.244103	152.668778
21	HPZ09	Southwestern Hervey Bay	25°13.746'S	152°39.266'E	-25.2291	152.654433
22	HPZ09	Southwestern Hervey Bay	25°13.473'S	152°39.567'E	-25.224556	152.65945
23	HPZ09	Southwestern Hervey Bay	25°13.443'S	152°39.523'E	-25.224046	152.658716
24	HPZ09	Southwestern Hervey Bay	25°13.236'S	152°39.371'E	-25.220595	152.656183
25	HPZ09	Southwestern Hervey Bay	25°12.867'S	152°39.045'E	-25.214451	152.650744
26	HPZ09	Southwestern Hervey Bay	25°12.723'S	152°38.917'E	-25.212042	152.648611
27	HPZ09	Southwestern Hervey Bay	25°13.032'S	152°38.405'E	-25.217194	152.640089
28	HPZ09	Southwestern Hervey Bay	25°11.033'S	152°36.472'E	-25.18388	152.607858
29	HPZ09	Southwestern Hervey Bay	25°10.982'S	152°36.472'E	-25.183027	152.60787
30	HPZ09	Southwestern Hervey Bay	25°10.961'S	152°36.519'E	-25.182676	152.608643
31	HPZ09	Southwestern Hervey Bay	25°10.939'S	152°36.691'E	-25.182314	152.611515
32	HPZ09	Southwestern Hervey Bay	25°10.933'S	152°36.886'E	-25.182222	152.614767
33	HPZ09	Southwestern Hervey Bay	25°10.425'S	152°36.886'E	-25.173743	152.614767
34	HPZ09	Southwestern Hervey Bay	25°4.457'S	152°32.72'E	-25.074285	152.545333
35	HPZ09	Southwestern Hervey Bay	25°4.128'S	152°32.72'E	-25.068797	152.545333
36	HPZ09	Southwestern Hervey Bay	25°5.0'S	152°33.169'E	-25.083333	152.552817
37	HPZ09	Southwestern Hervey Bay	25°5.0'S	152°34.27'E	-25.083333	152.571167
38	HPZ09	Southwestern Hervey Bay	25°6.269'S	152°34.9'E	-25.104483	152.581667
39	HPZ09	Southwestern Hervey Bay	25°6.269'S	152°33.863'E	-25.104483	152.564383
40	HPZ09	Southwestern Hervey Bay	25°5.723'S	152°33.451'E	-25.095383	152.557517
41	HPZ09	Southwestern Hervey Bay	25°5.23'S	152°33.236'E	-25.087167	152.553933

**Note:**

Between points 10 and 11, points 16 and 18, points 27 and 29, points 33 and 34, points 35 and 1, the boundary is the marine park outer boundary.

Points 15 to 16, points 18 to 20 and points 22 to 27 align with the proposed revision of the Beelbi declared Fish Habitat Area.

Points 26 to 27 and points 29 to 32 align with the proposed revision of the Burrum declared Fish Habitat Area.

HPZ10: Woralie



Coord inate	Zone	Zone name	Latitude (DDM)	Longitude (DDM)	Latitude (DD)	Longitude (DD)
1	HPZ10	Woralie	25°4.481'S	153°9.741'E	-25.074683	153.16235
2	HPZ10	Woralie	25°4.481'S	153°10.106'E	-25.074683	153.168435
3	HPZ10	Woralie	25°10.138'S	153°3.009'E	-25.168967	153.05015
4	HPZ10	Woralie	25°10.138'S	153°2.325'E	-25.168967	153.03875
5	HPZ10	Woralie	25°9.291'S	153°4.002'E	-25.15485	153.0667
6	HPZ10	Woralie	25°6.264'S	153°7.868'E	-25.1044	153.131133

Note:

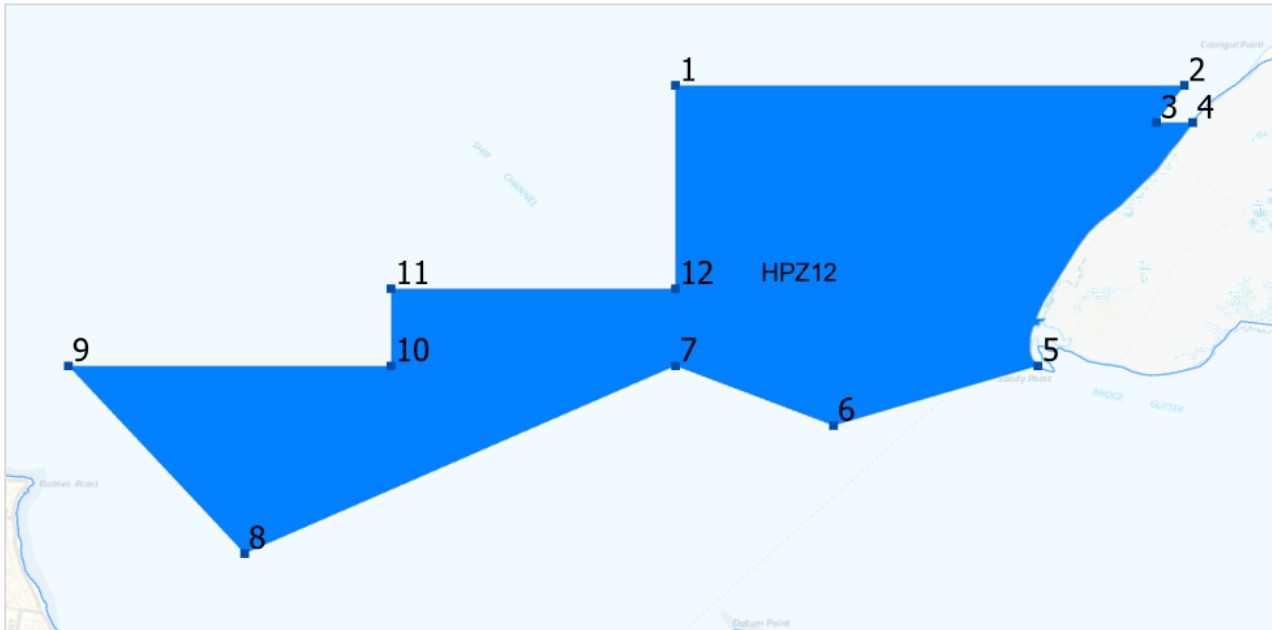
Between points 2 and 3, the boundary is the marine park outer boundary.

**HPZ11: Northern Fork Bank**



Coord inate	Zone	Zone name	Latitude (DDM)	Longitude (DDM)	Latitude (DD)	Longitude (DD)
1	HPZ11	Northern Fork Bank	25°4.833'S	152°52.0'E	-25.08055	152.866667
2	HPZ11	Northern Fork Bank	25°4.833'S	152°56.0'E	-25.08055	152.933333
3	HPZ11	Northern Fork Bank	25°7.0'S	152°56.0'E	-25.116667	152.933333
4	HPZ11	Northern Fork Bank	25°7.0'S	152°52.0'E	-25.116667	152.866667

## HPZ12: Pelican Bank

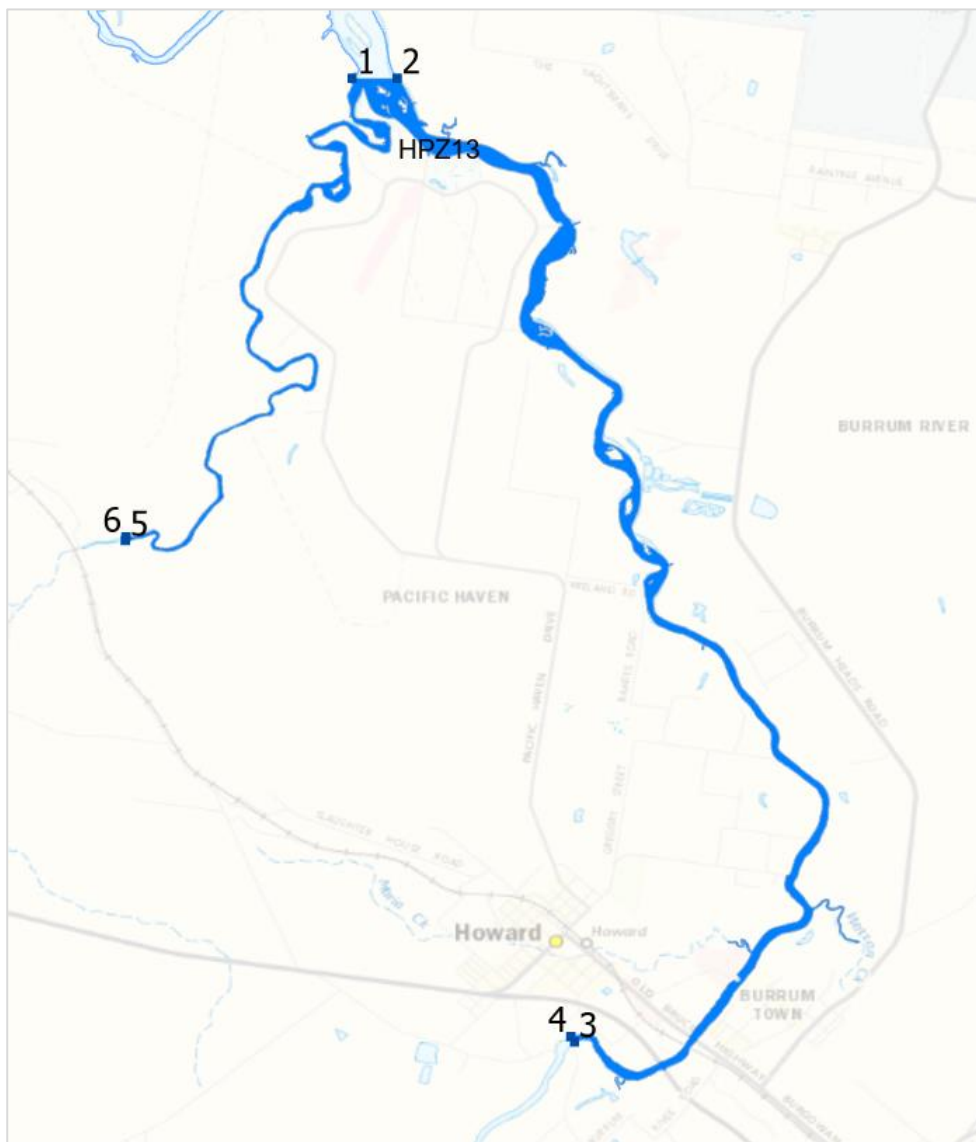


Coord inate	Zone	Zone name	Latitude (DDM)	Longitude (DDM)	Latitude (DD)	Longitude (DD)
1	HPZ12	Pelican Bank	25°11.0'S	152°56.0'E	-25.183333	152.933333
2	HPZ12	Pelican Bank	25°11.0'S	153°1.011'E	-25.183333	153.01685
3	HPZ12	Pelican Bank	25°11.365'S	153°0.736'E	-25.189417	153.012267
4	HPZ12	Pelican Bank	25°11.365'S	153°1.094'E	-25.189417	153.018226
5	HPZ12	Pelican Bank	25°13.76'S	152°59.569'E	-25.229333	152.992816
6	HPZ12	Pelican Bank	25°14.348'S	152°57.558'E	-25.239133	152.9593
7	HPZ12	Pelican Bank	25°13.76'S	152°56.0'E	-25.229333	152.933333
8	HPZ12	Pelican Bank	25°15.607'S	152°51.758'E	-25.260117	152.862633
9	HPZ12	Pelican Bank	25°13.76'S	152°50.023'E	-25.229333	152.833717
10	HPZ12	Pelican Bank	25°13.76'S	152°53.2'E	-25.229333	152.886667
11	HPZ12	Pelican Bank	25°13.0'S	152°53.2'E	-25.216667	152.886667
12	HPZ12	Pelican Bank	25°13.0'S	152°56.0'E	-25.216667	152.933333

Note:

Between points 4 and 5, the boundary is the marine park outer boundary.

## HPZ13: Cherwell and Upper Burrum Rivers



Coord inate	Zone	Zone name	Latitude (DDM)	Longitude (DDM)	Latitude (DD)	Longitude (DD)
1	HPZ13	Cherwell and Upper Burrum Rivers	25°13.401'S	152°32.336'E	-25.223358	152.538935
2	HPZ13	Cherwell and Upper Burrum Rivers	25°13.402'S	152°32.634'E	-25.223371	152.543899
3	HPZ13	Cherwell and Upper Burrum Rivers	25°19.765'S	152°33.805'E	-25.329409	152.563417
4	HPZ13	Cherwell and Upper Burrum Rivers	25°19.73'S	152°33.781'E	-25.328837	152.563017
5	HPZ13	Cherwell and Upper Burrum Rivers	25°16.454'S	152°30.838'E	-25.274239	152.513973
6	HPZ13	Cherwell and Upper Burrum Rivers	25°16.431'S	152°30.842'E	-25.273847	152.514033

### Note:

Points 1 to 2 align with the Burrum declared Fish Habitat Area.

Points 5 to 6 align with the Burrum declared Fish Habitat Area.

Between points 2 and 3, points 4 and 5 and points 6 and 1, the boundary is the marine park outer boundary.



HPZ14: Gatakers Bay

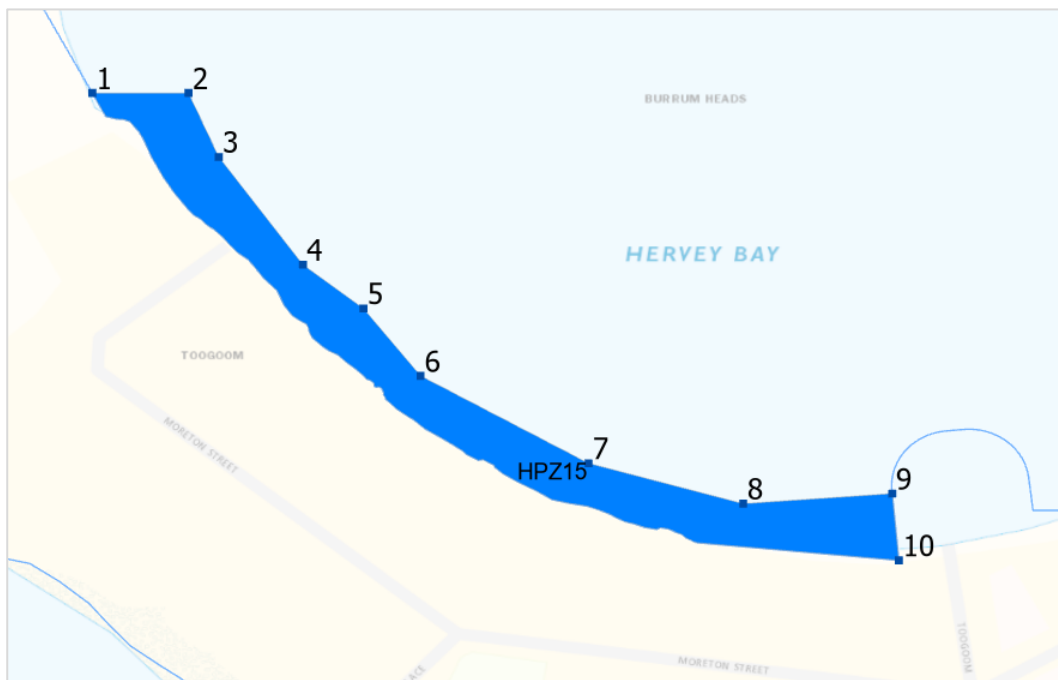


Coord inate	Zone	Zone name	Latitude (DDM)	Longitude (DDM)	Latitude (DD)	Longitude (DD)
1	HPZ14	Gatakers Bay	25°14.516'S	152°48.633'E	-25.241933	152.81055
2	HPZ14	Gatakers Bay	25°14.505'S	152°48.667'E	-25.24175	152.811117
3	HPZ14	Gatakers Bay	25°14.691'S	152°48.736'E	-25.244843	152.812267
4	HPZ14	Gatakers Bay	25°14.702'S	152°48.7'E	-25.245033	152.811667

Note:

Between points 3 and 4, the boundary is the marine park outer boundary.

**HPZ15: Beelbi Creek**

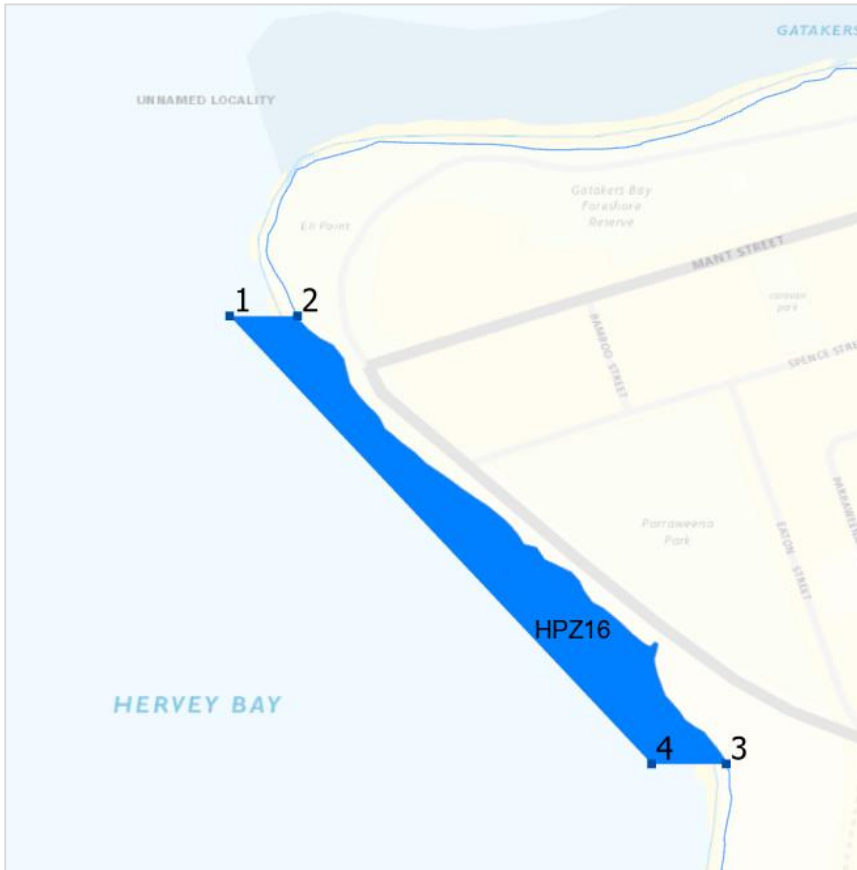


Coord inate	Zone	Zone name	Latitude (DDM)	Longitude (DDM)	Latitude (DD)	Longitude (DD)
1	HPZ15	Beelbi Creek	25°14.706'S	152°39.684'E	-25.2451	152.661406
2	HPZ15	Beelbi Creek	25°14.706'S	152°39.713'E	-25.2451	152.661883
3	HPZ15	Beelbi Creek	25°14.725'S	152°39.722'E	-25.245417	152.662033
4	HPZ15	Beelbi Creek	25°14.757'S	152°39.747'E	-25.24595	152.66245
5	HPZ15	Beelbi Creek	25°14.77'S	152°39.765'E	-25.246167	152.66275
6	HPZ15	Beelbi Creek	25°14.79'S	152°39.782'E	-25.2465	152.663033
7	HPZ15	Beelbi Creek	25°14.816'S	152°39.832'E	-25.246933	152.663867
8	HPZ15	Beelbi Creek	25°14.828'S	152°39.878'E	-25.247133	152.664633
9	HPZ15	Beelbi Creek	25°14.825'S	152°39.922'E	-25.247083	152.665372
10	HPZ15	Beelbi Creek	25°14.845'S	152°39.924'E	-25.247414	152.665405

Note:

Between points 9 and 10 and points 10 and 1, the boundary is the marine park outer boundary.

## HPZ16: Point Vernon West

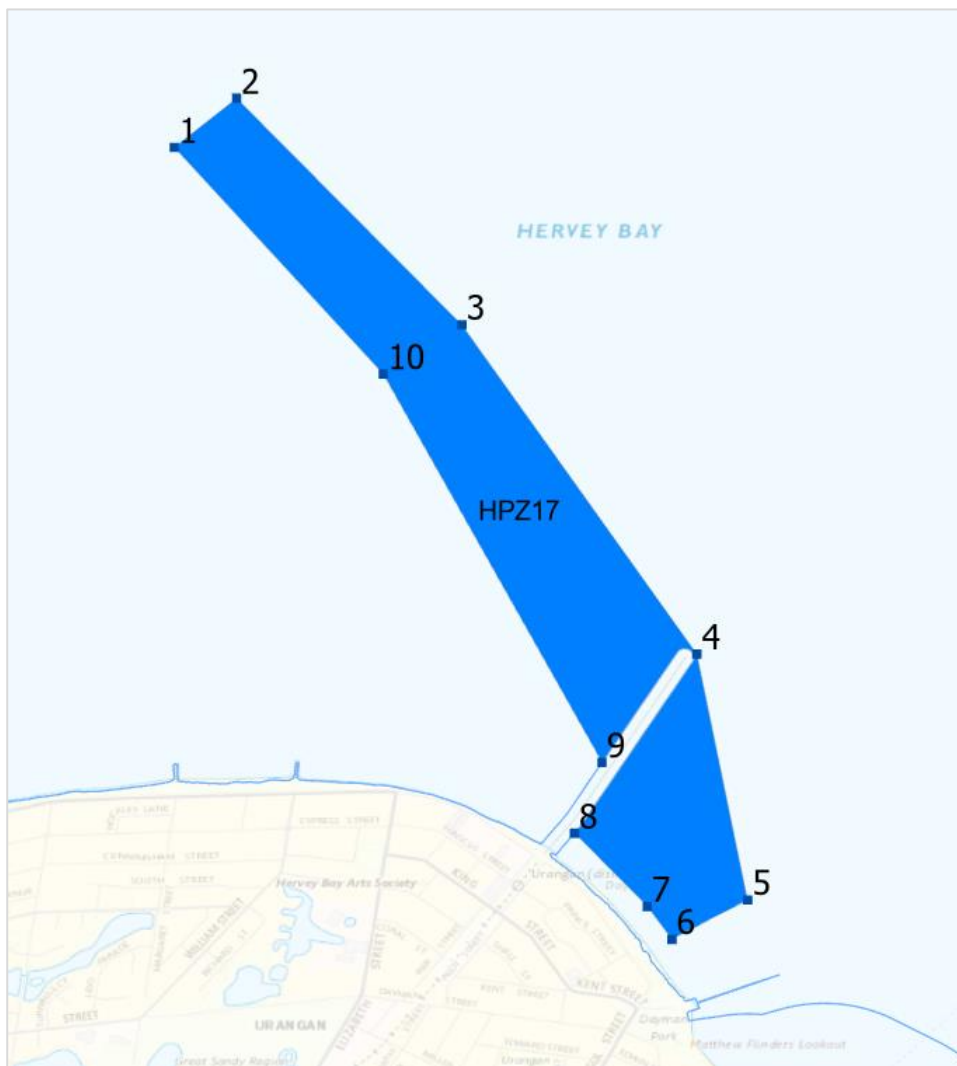


Coord inate	Zone	Zone name	Latitude (DDM)	Longitude (DDM)	Latitude (DD)	Longitude (DD)
1	HPZ16	Point Vernon West	25°14.91'S	152°48.26'E	-25.2485	152.804333
2	HPZ16	Point Vernon West	25°14.91'S	152°48.297'E	-25.2485	152.80495
3	HPZ16	Point Vernon West	25°15.154'S	152°48.531'E	-25.252567	152.808844
4	HPZ16	Point Vernon West	25°15.154'S	152°48.49'E	-25.252567	152.808167

### Note:

Between points 2 and 3, the boundary is the marine park outer boundary.

## HPZ17: Dayman Spit

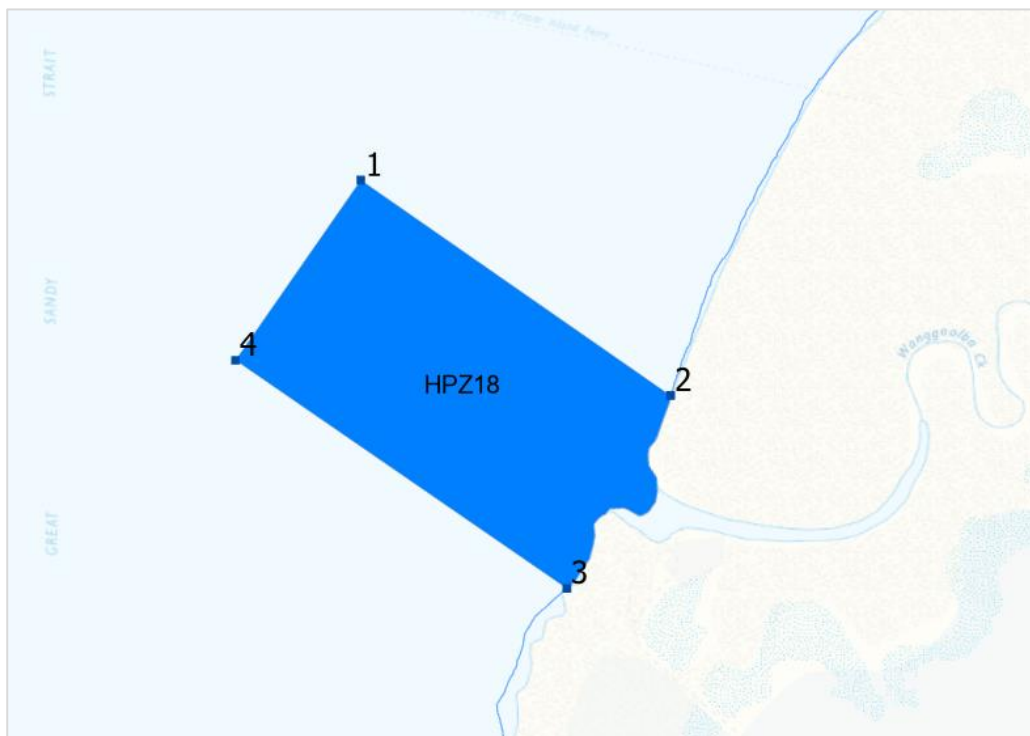


Coord inate	Zone	Zone name	Latitude (DDM)	Longitude (DDM)	Latitude (DD)	Longitude (DD)
1	HPZ17	Dayman Spit	25°15.539'S	152°53.453'E	-25.258983	152.890883
2	HPZ17	Dayman Spit	25°15.439'S	152°53.58'E	-25.257317	152.893
3	HPZ17	Dayman Spit	25°15.9'S	152°54.038'E	-25.265	152.900633
4	HPZ17	Dayman Spit	25°16.57'S	152°54.516'E	-25.276167	152.9086
5	HPZ17	Dayman Spit	25°17.07'S	152°54.619'E	-25.2845	152.910317
6	HPZ17	Dayman Spit	25°17.15'S	152°54.465'E	-25.285833	152.90775
7	HPZ17	Dayman Spit	25°17.083'S	152°54.415'E	-25.284717	152.906917
8	HPZ17	Dayman Spit	25°16.934'S	152°54.267'E	-25.282233	152.904453
9	HPZ17	Dayman Spit	25°16.79'S	152°54.323'E	-25.279833	152.905384
10	HPZ17	Dayman Spit	25°16.0'S	152°53.878'E	-25.266667	152.897967

Note:

Between points 8 and 9, the boundary is the marine park outer boundary.

## HPZ18: Wanggoolba Creek

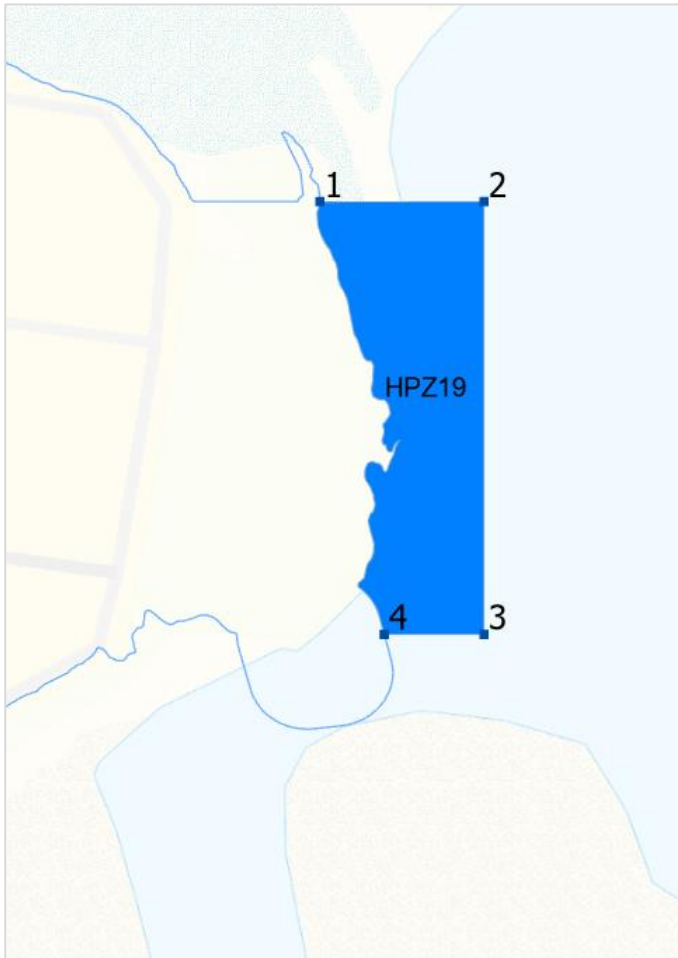


Coord inate	Zone	Zone name	Latitude (DDM)	Longitude (DDM)	Latitude (DD)	Longitude (DD)
1	HPZ18	Wanggoolba Creek	25°26.434'S	152°59.041'E	-25.440567	152.984017
2	HPZ18	Wanggoolba Creek	25°26.654'S	152°59.357'E	-25.444233	152.989289
3	HPZ18	Wanggoolba Creek	25°26.851'S	152°59.251'E	-25.447517	152.987522
4	HPZ18	Wanggoolba Creek	25°26.618'S	152°58.913'E	-25.443633	152.981883

Note:

Between points 2 and 3, the boundary is the marine park outer boundary.

## HPZ19: Maaroom



Coord inate	Zone	Zone name	Latitude (DDM)	Longitude (DDM)	Latitude (DD)	Longitude (DD)
1	HPZ19	Maaroom	25°36.633'S	152°52.536'E	-25.61055	152.875599
2	HPZ19	Maaroom	25°36.633'S	152°52.586'E	-25.61055	152.876433
3	HPZ19	Maaroom	25°36.765'S	152°52.586'E	-25.61275	152.876433
4	HPZ19	Maaroom	25°36.765'S	152°52.556'E	-25.61275	152.875927

Note:

Between points 4 and 1, the boundary is the marine park outer boundary.

**HPZ20: Hook Point**



Coord inate	Zone	Zone name	Latitude (DDM)	Longitude (DDM)	Latitude (DD)	Longitude (DD)
1	HPZ20	Hook Point	25°37.2'S	153°5.619'E	-25.62	153.093658
2	HPZ20	Hook Point	25°37.2'S	153°6.96'E	-25.62	153.116
3	HPZ20	Hook Point	25°47.446'S	153°6.96'E	-25.790767	153.116
4	HPZ20	Hook Point	25°47.446'S	153°4.669'E	-25.790767	153.077809
5	HPZ20	Hook Point	25°42.7'S	153°4.743'E	-25.711667	153.079053
6	HPZ20	Hook Point	25°42.7'S	153°5.044'E	-25.711667	153.084062

**Note:**

Between points 4 and 5, the boundary is the marine park outer boundary.

Between points 6 and 1, the boundary is defined by a 500m coastal line, which is the imaginary line, every point of which is 500m seaward from the marine park boundary.

**HPZ21: Boonooroo**



Coord inate	Zone	Zone name	Latitude (DDM)	Longitude (DDM)	Latitude (DD)	Longitude (DD)
1	HPZ21	Boonooroo	25°39.774'S	152°54.214'E	-25.6629	152.90357
2	HPZ21	Boonooroo	25°39.764'S	152°54.239'E	-25.662733	152.903982
3	HPZ21	Boonooroo	25°39.764'S	152°54.247'E	-25.662733	152.904117
4	HPZ21	Boonooroo	25°39.842'S	152°54.231'E	-25.664033	152.90385
5	HPZ21	Boonooroo	25°39.939'S	152°54.283'E	-25.66565	152.904717
6	HPZ21	Boonooroo	25°39.939'S	152°54.253'E	-25.66565	152.904212

**Note:**

Between points 1 and 2, the boundary is the marine park outer boundary.

Between points 6 and 1, the boundary is the marine park outer boundary.



**HPZ22: Tuan**

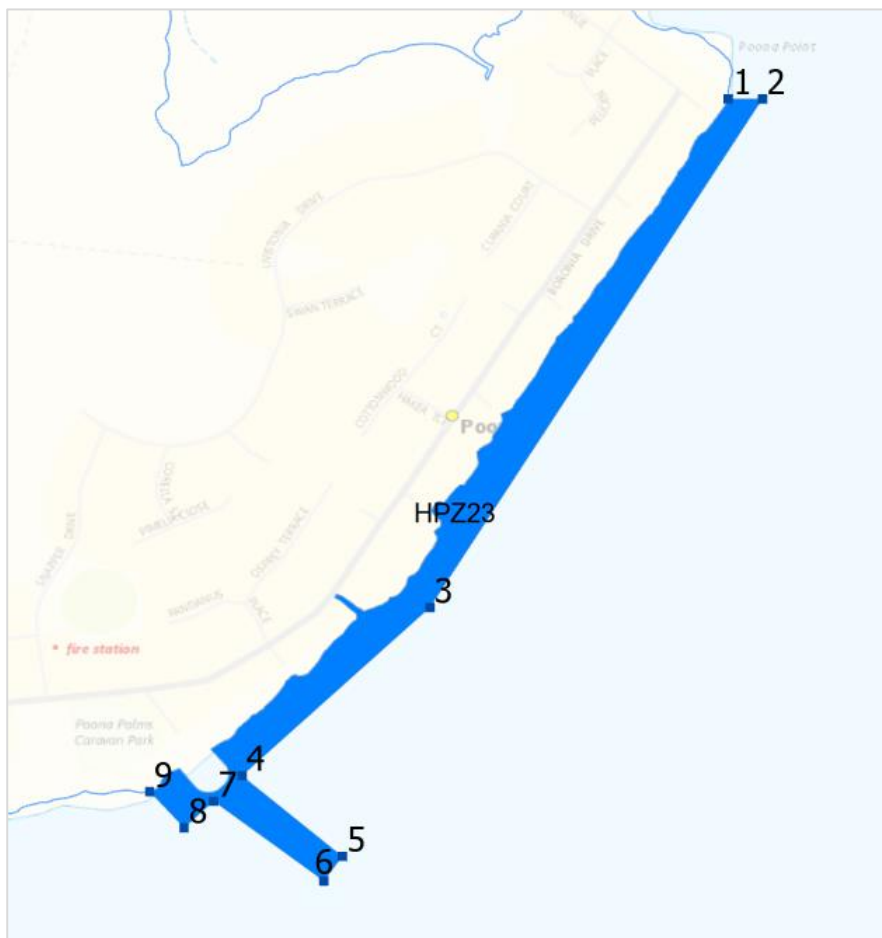


Coord inate	Zone	Zone name	Latitude (DDM)	Longitude (DDM)	Latitude (DD)	Longitude (DD)
1	HPZ22	Tuan	25°40.733'S	152°52.717'E	-25.678883	152.878623
2	HPZ22	Tuan	25°40.733'S	152°52.749'E	-25.678883	152.87915
3	HPZ22	Tuan	25°40.972'S	152°52.733'E	-25.682867	152.878883
4	HPZ22	Tuan	25°41.126'S	152°52.703'E	-25.685433	152.878383
5	HPZ22	Tuan	25°41.134'S	152°52.703'E	-25.685562	152.878383
6	HPZ22	Tuan	25°41.122'S	152°52.677'E	-25.685362	152.877943

**Note:**

Between points 5 and 6 and points 6 and 1, the boundary is the marine park outer boundary.

## HPZ23: Poona



Coord inate	Zone	Zone name	Latitude (DDM)	Longitude (DDM)	Latitude (DD)	Longitude (DD)
1	HPZ23	Poona	25°42.685'S	152°55.353'E	-25.711417	152.922553
2	HPZ23	Poona	25°42.685'S	152°55.388'E	-25.711417	152.923133
3	HPZ23	Poona	25°43.202'S	152°55.05'E	-25.720033	152.9175
4	HPZ23	Poona	25°43.373'S	152°54.859'E	-25.722883	152.914317
5	HPZ23	Poona	25°43.455'S	152°54.961'E	-25.72425	152.916017
6	HPZ23	Poona	25°43.48'S	152°54.942'E	-25.724667	152.9157
7	HPZ23	Poona	25°43.399'S	152°54.83'E	-25.723317	152.913833
8	HPZ23	Poona	25°43.426'S	152°54.8'E	-25.723767	152.913333
9	HPZ23	Poona	25°43.389'S	152°54.765'E	-25.723153	152.91275

Note:

Between points 9 and 1, the boundary is the marine park outer boundary.

## HPZ24: Tinnanbar



Coord inate	Zone	Zone name	Latitude (DDM)	Longitude (DDM)	Latitude (DD)	Longitude (DD)
1	HPZ24	Tinnanbar	25°45.46'S	152°57.111'E	-25.757667	152.95185
2	HPZ24	Tinnanbar	25°45.419'S	152°57.24'E	-25.756983	152.954
3	HPZ24	Tinnanbar	25°45.419'S	152°57.42'E	-25.756983	152.957
4	HPZ24	Tinnanbar	25°45.454'S	152°57.55'E	-25.757567	152.959167
5	HPZ24	Tinnanbar	25°45.525'S	152°57.745'E	-25.75875	152.962417
6	HPZ24	Tinnanbar	25°45.567'S	152°57.823'E	-25.75945	152.963717
7	HPZ24	Tinnanbar	25°45.609'S	152°57.823'E	-25.760154	152.963717
8	HPZ24	Tinnanbar	25°45.506'S	152°57.111'E	-25.758441	152.95185

Note:

Between points 7 and 8, the boundary is the marine park outer boundary.

**HPZ25: Inskip**



Coord inate	Zone	Zone name	Latitude (DDM)	Longitude (DDM)	Latitude (DD)	Longitude (DD)
1	HPZ25	Inskip	25°49.438'S	153°4.401'E	-25.823967	153.073356
2	HPZ25	Inskip	25°49.438'S	153°4.703'E	-25.823967	153.078383
3	HPZ25	Inskip	25°51.49'S	153°4.922'E	-25.858167	153.082033
4	HPZ25	Inskip	25°53.524'S	153°5.551'E	-25.892067	153.092517
5	HPZ25	Inskip	25°53.623'S	153°5.272'E	-25.893717	153.087868

Note:

Between points 5 and 1, the boundary is the marine park outer boundary.

## HPZ26: Rainbow Beach



Coord inate	Zone	Zone name	Latitude (DDM)	Longitude (DDM)	Latitude (DD)	Longitude (DD)
1	HPZ26	Rainbow Beach	25°53.938'S	153°5.454'E	-25.898967	153.090893
2	HPZ26	Rainbow Beach	25°53.895'S	153°5.506'E	-25.89825	153.091767
3	HPZ26	Rainbow Beach	25°54.188'S	153°5.756'E	-25.903133	153.095933
4	HPZ26	Rainbow Beach	25°54.232'S	153°5.707'E	-25.903867	153.095112

Note:

Between points 4 and 1, the boundary is the marine park outer boundary.

HPZ27: Tin Can Bay



Coord inate	Zone	Zone name	Latitude (DDM)	Longitude (DDM)	Latitude (DD)	Longitude (DD)
1	HPZ27	Tin Can Bay	25°54.362'S	153°0.631'E	-25.906033	153.010513
2	HPZ27	Tin Can Bay	25°54.362'S	153°0.662'E	-25.906033	153.011033
3	HPZ27	Tin Can Bay	25°54.477'S	153°0.602'E	-25.90795	153.010033
4	HPZ27	Tin Can Bay	25°54.595'S	153°0.525'E	-25.909917	153.00875
5	HPZ27	Tin Can Bay	25°54.728'S	153°0.567'E	-25.912133	153.00945
6	HPZ27	Tin Can Bay	25°54.86'S	153°0.498'E	-25.914333	153.0083
7	HPZ27	Tin Can Bay	25°55.04'S	153°0.47'E	-25.917333	153.007833
8	HPZ27	Tin Can Bay	25°55.142'S	153°0.469'E	-25.919033	153.007817
9	HPZ27	Tin Can Bay	25°55.188'S	153°0.481'E	-25.9198	153.008017
10	HPZ27	Tin Can Bay	25°55.24'S	153°0.489'E	-25.920667	153.00815
11	HPZ27	Tin Can Bay	25°55.245'S	153°0.547'E	-25.92075	153.009117
12	HPZ27	Tin Can Bay	25°55.414'S	153°0.725'E	-25.923567	153.012083
13	HPZ27	Tin Can Bay	25°55.585'S	153°0.777'E	-25.926417	153.01295
14	HPZ27	Tin Can Bay	25°55.732'S	153°0.884'E	-25.928867	153.014733
15	HPZ27	Tin Can Bay	25°55.83'S	153°0.988'E	-25.9305	153.016467
16	HPZ27	Tin Can Bay	25°55.887'S	153°0.978'E	-25.93145	153.0163

Coordinate	Zone	Zone name	Latitude (DDM)	Longitude (DDM)	Latitude (DD)	Longitude (DD)
17	HPZ27	Tin Can Bay	25°55.912'S	153°0.87'E	-25.931867	153.0145
18	HPZ27	Tin Can Bay	25°55.882'S	153°0.87'E	-25.931372	153.0145

Note:

Between points 18 and 1, the boundary is the marine park outer boundary.

## HPZ28: Coloured Sands



Coord inate	Zone	Zone name	Latitude (DDM)	Longitude (DDM)	Latitude (DD)	Longitude (DD)
1	HPZ28	Coloured Sands	25°55.442'S	153°6.581'E	-25.924033	153.109677
2	HPZ28	Coloured Sands	25°55.273'S	153°6.815'E	-25.921217	153.113583
3	HPZ28	Coloured Sands	25°55.921'S	153°7.55'E	-25.932017	153.125833
4	HPZ28	Coloured Sands	25°56.541'S	153°8.634'E	-25.94235	153.1439
5	HPZ28	Coloured Sands	25°56.747'S	153°9.78'E	-25.945783	153.163
6	HPZ28	Coloured Sands	25°56.569'S	153°10.367'E	-25.942817	153.172783
7	HPZ28	Coloured Sands	25°56.209'S	153°10.6'E	-25.936817	153.176667
8	HPZ28	Coloured Sands	25°56.209'S	153°10.916'E	-25.936817	153.181939

Note:

Between points 8 and 1, the boundary is the marine park outer boundary.