

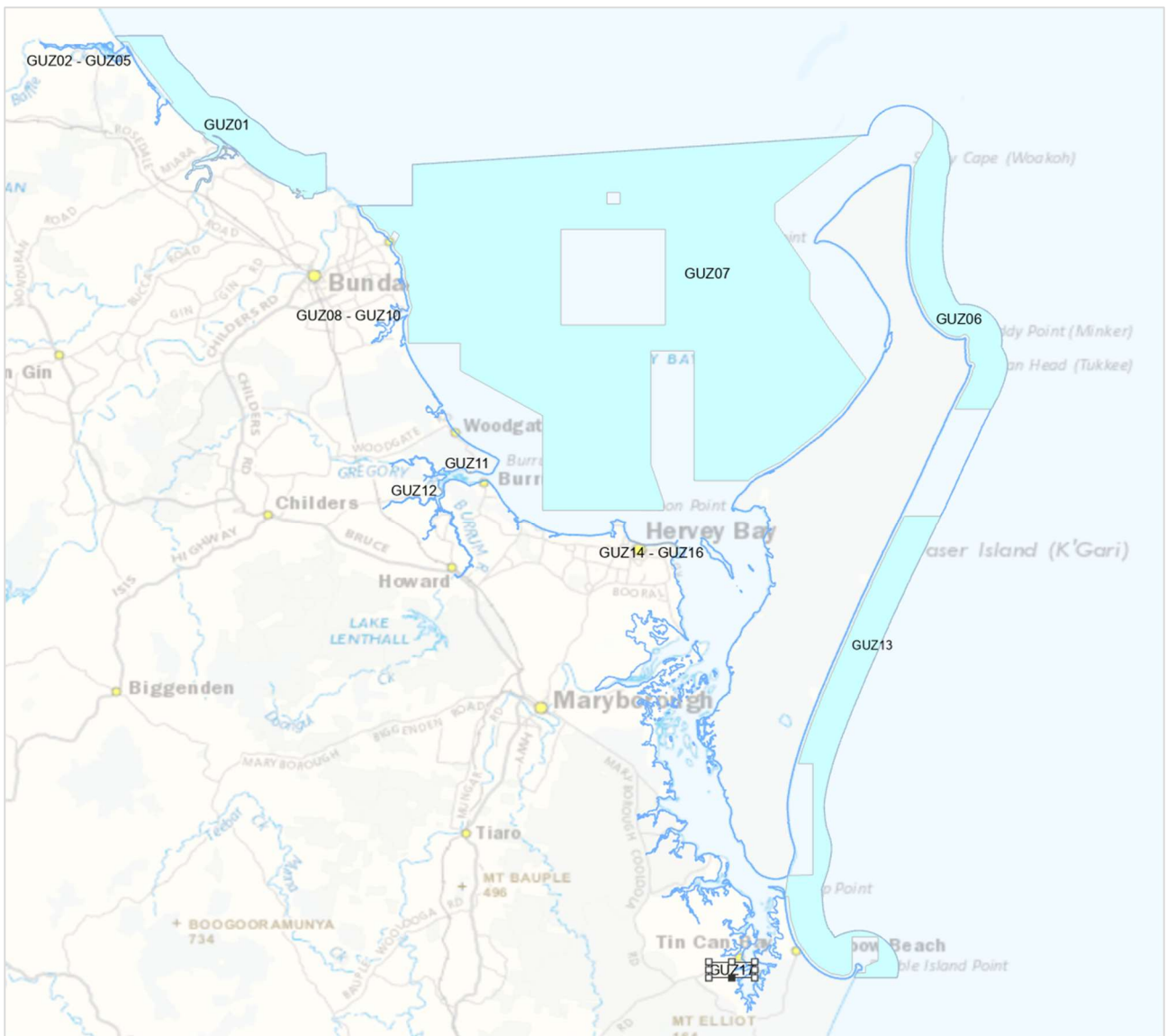
Great Sandy Marine Park

Zones to be included in Final Zoning Plan

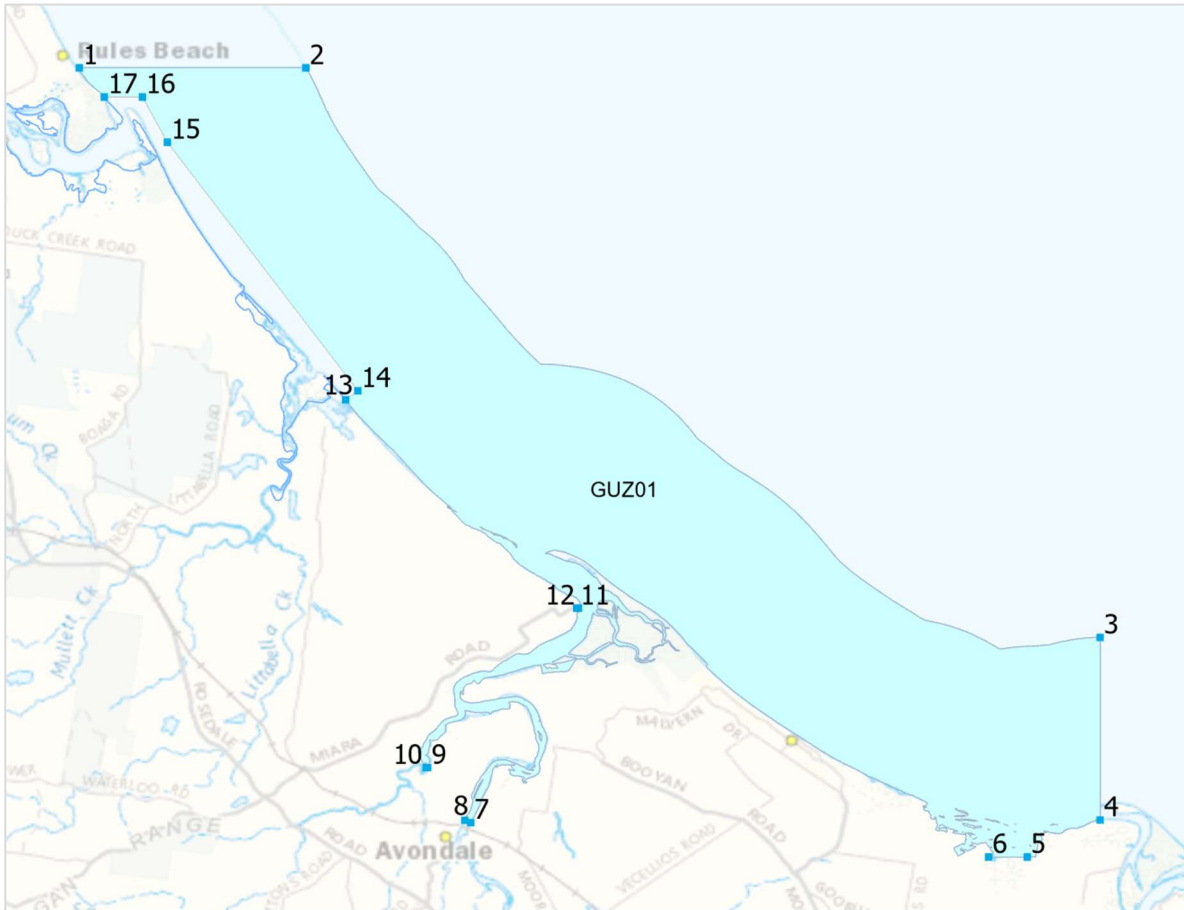
2023

General Use Zone (GUZ) coordinates

Coordinates are listed in a clockwise direction, starting at the north-west coordinate (top left) of each zone/area where practical.



GUZ01: Kolan



Coord inate	Zone	Zone name	Latitude (DDM)	Longitude (DDM)	Latitude (DD)	Longitude (DD)
1	GUZ01	Kolan	24°29.899'S	152°2.56'E	-24.498321	152.042669
2	GUZ01	Kolan	24°29.899'S	152°6.874'E	-24.498321	152.114571
3	GUZ01	Kolan	24°40.739'S	152°22.0'E	-24.678981	152.366673
4	GUZ01	Kolan	24°44.212'S	152°22.0'E	-24.736866	152.366673
5	GUZ01	Kolan	24°44.916'S	152°20.613'E	-24.7486	152.343558
6	GUZ01	Kolan	24°44.916'S	152°19.879'E	-24.7486	152.331324
7	GUZ01	Kolan	24°44.262'S	152°10.015'E	-24.737696	152.16691
8	GUZ01	Kolan	24°44.216'S	152°9.902'E	-24.73693	152.165031
9	GUZ01	Kolan	24°43.216'S	152°9.195'E	-24.720267	152.153253
10	GUZ01	Kolan	24°43.216'S	152°9.166'E	-24.720267	152.152765
11	GUZ01	Kolan	24°40.18'S	152°12.032'E	-24.669667	152.200536
12	GUZ01	Kolan	24°40.18'S	152°12.067'E	-24.669667	152.201123
13	GUZ01	Kolan	24°36.217'S	152°7.634'E	-24.603617	152.127227
14	GUZ01	Kolan	24°36.045'S	152°7.864'E	-24.60075	152.131067
15	GUZ01	Kolan	24°31.315'S	152°4.237'E	-24.521917	152.070617
16	GUZ01	Kolan	24°30.455'S	152°3.763'E	-24.507583	152.062717
17	GUZ01	Kolan	24°30.455'S	152°3.035'E	-24.507583	152.050583

Note:

Between points 1 and 2, points 4 and 7, points 8 to 9, points 10 to 11, points 12 to 13 and points 17 to 1, the boundary is the marine park outer boundary.

Between points 2 and 3, the boundary is the limit of Queensland Coastal Waters.

Points 3 to 4 align with the boundary of the Port Limits for the Port of Bundaberg (a port under the *Transport Infrastructure Act 1994*).

Points 7 to 8 align with the proposed revision of the Kolan River declared Fish Habitat Area.

GUZ02: Rosedale



Coord inate	Zone	Zone name	Latitude (DDM)	Longitude (DDM)	Latitude (DD)	Longitude (DD)
1	GUZ02	Rosedale	24°30.989'S	151°58.638'E	-24.516483	151.9773
2	GUZ02	Rosedale	24°31.003'S	151°58.689'E	-24.516717	151.97815
3	GUZ02	Rosedale	24°31.029'S	151°58.721'E	-24.51715	151.978683
4	GUZ02	Rosedale	24°31.039'S	151°58.72'E	-24.517317	151.978667
5	GUZ02	Rosedale	24°31.053'S	151°58.756'E	-24.51755	151.979267
6	GUZ02	Rosedale	24°31.056'S	151°58.795'E	-24.5176	151.979917
7	GUZ02	Rosedale	24°31.019'S	151°58.821'E	-24.516983	151.98035
8	GUZ02	Rosedale	24°31.012'S	151°58.851'E	-24.516867	151.98085
9	GUZ02	Rosedale	24°31.016'S	151°58.94'E	-24.516933	151.982333
10	GUZ02	Rosedale	24°31.023'S	151°58.961'E	-24.51705	151.982683
11	GUZ02	Rosedale	24°31.004'S	151°58.981'E	-24.516733	151.983017
12	GUZ02	Rosedale	24°30.968'S	151°59.066'E	-24.516133	151.984433
13	GUZ02	Rosedale	24°30.966'S	151°59.1'E	-24.5161	151.985
14	GUZ02	Rosedale	24°30.984'S	151°59.097'E	-24.516405	151.984957
15	GUZ02	Rosedale	24°31.005'S	151°58.635'E	-24.516747	151.977258

Note:

Points 1 to 13 align with the proposed revision of the Baffle Creek declared Fish Habitat Area.

Between points 14 and 15, the boundary is the marine park outer boundary.

GUZ03: Winfield



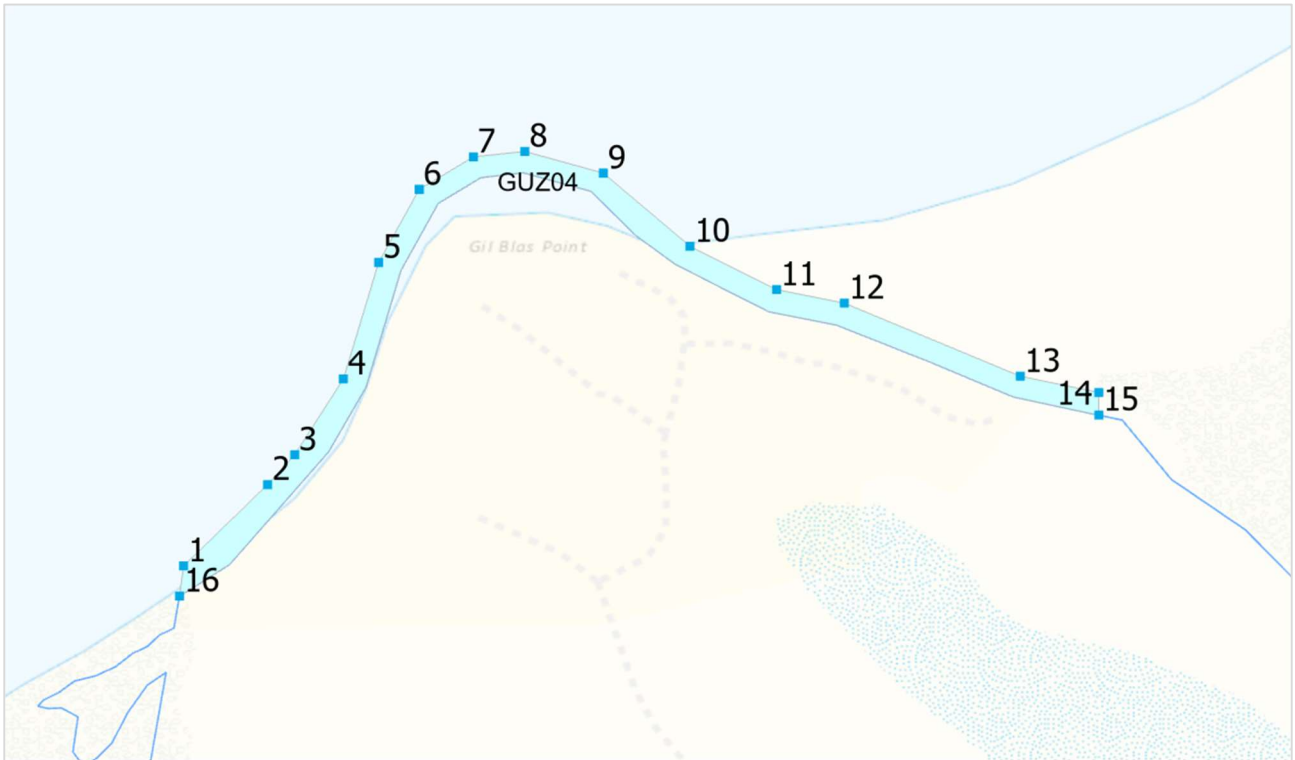
Coord inate	Zone	Zone name	Latitude (DDM)	Longitude (DDM)	Latitude (DD)	Longitude (DD)
1	GUZ03	Winfield	24°31.259'S	152°1.128'E	-24.52099	152.018808
2	GUZ03	Winfield	24°31.256'S	152°1.139'E	-24.520928	152.018981
3	GUZ03	Winfield	24°31.465'S	152°1.261'E	-24.524409	152.021024
4	GUZ03	Winfield	24°31.473'S	152°1.24'E	-24.524551	152.020669

Note:

Points 2 to 3 align with the proposed revision of the Baffle Creek declared Fish Habitat Area.

Between points 4 and 1, the boundary is the marine park outer boundary.

GUZ04: Boaga



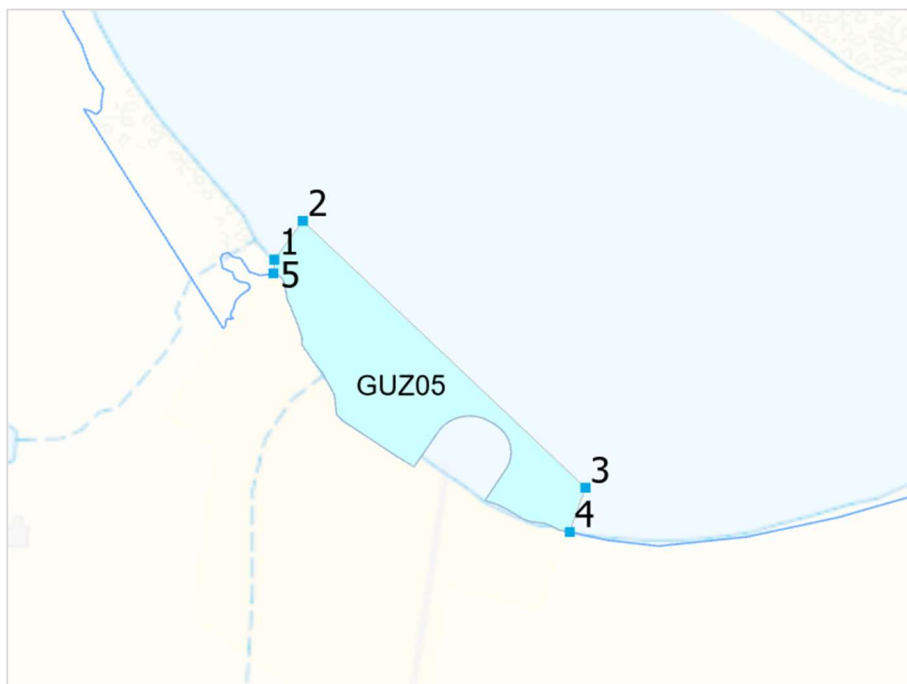
Coord inate	Zone	Zone name	Latitude (DDM)	Longitude (DDM)	Latitude (DD)	Longitude (DD)
1	GUZ04	Boaga	24°31.799'S	152°2.948'E	-24.529983	152.049133
2	GUZ04	Boaga	24°31.769'S	152°2.979'E	-24.529483	152.04965
3	GUZ04	Boaga	24°31.758'S	152°2.989'E	-24.5293	152.049817
4	GUZ04	Boaga	24°31.73'S	152°3.007'E	-24.528833	152.050117
5	GUZ04	Boaga	24°31.687'S	152°3.02'E	-24.528117	152.050333
6	GUZ04	Boaga	24°31.66'S	152°3.035'E	-24.527667	152.050583
7	GUZ04	Boaga	24°31.648'S	152°3.055'E	-24.527467	152.050917
8	GUZ04	Boaga	24°31.646'S	152°3.074'E	-24.527433	152.051233
9	GUZ04	Boaga	24°31.654'S	152°3.103'E	-24.527567	152.051717
10	GUZ04	Boaga	24°31.681'S	152°3.135'E	-24.528017	152.05225
11	GUZ04	Boaga	24°31.697'S	152°3.167'E	-24.528283	152.052783
12	GUZ04	Boaga	24°31.702'S	152°3.192'E	-24.528367	152.0532
13	GUZ04	Boaga	24°31.729'S	152°3.257'E	-24.528817	152.054283
14	GUZ04	Boaga	24°31.735'S	152°3.286'E	-24.528917	152.054767
15	GUZ04	Boaga	24°31.743'S	152°3.286'E	-24.529056	152.054767
16	GUZ04	Boaga	24°31.81'S	152°2.946'E	-24.530169	152.049108

Note:

Points 1 to 14 align with the proposed revision of the Baffle Creek declared Fish Habitat Area.

Between points 15 and 16, the boundary is the marine park outer boundary.

GUZ05: Winfield East



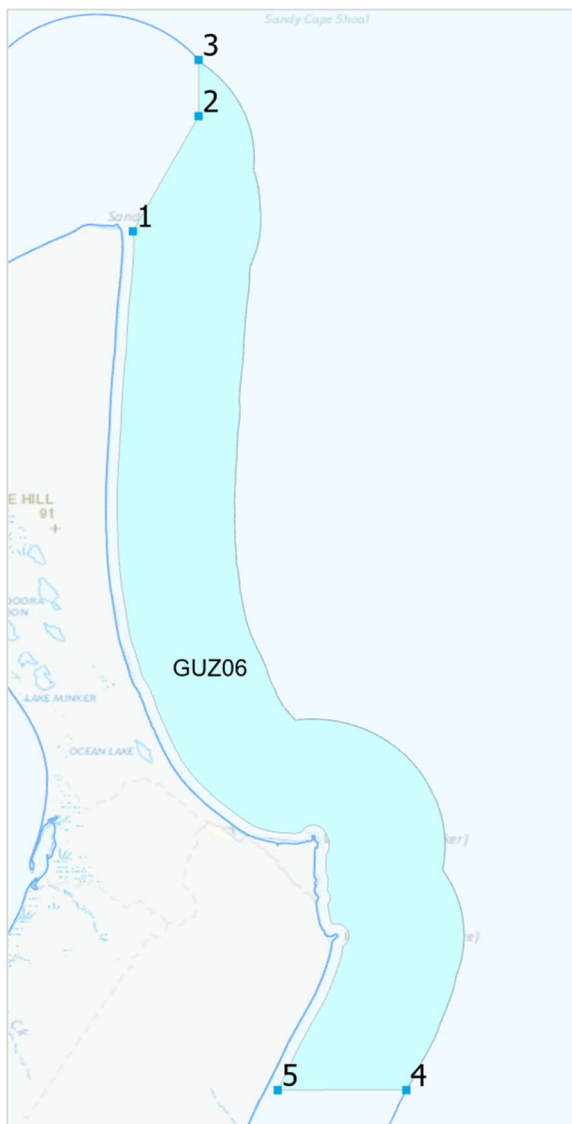
Coord inate	Zone	Zone name	Latitude (DDM)	Longitude (DDM)	Latitude (DD)	Longitude (DD)
1	GUZ05	Winfield East	24°31.82'S	152°1.531'E	-24.53034	152.025522
2	GUZ05	Winfield East	24°31.802'S	152°1.545'E	-24.530032	152.025748
3	GUZ05	Winfield East	24°31.929'S	152°1.68'E	-24.53215	152.027995
4	GUZ05	Winfield East	24°31.95'S	152°1.672'E	-24.532501	152.027869
5	GUZ05	Winfield East	24°31.827'S	152°1.531'E	-24.530449	152.025514

Note:

Points 1 to 4 align with the proposed revision of the Baffle Creek declared Fish Habitat Area.

Between points 4 and 5, the boundary is the marine park outer boundary.

GUZ06: Offshore K'gari North



Coordinate	Zone	Zone name	Latitude (DDM)	Longitude (DDM)	Latitude (DD)	Longitude (DD)
1	GUZ06	Offshore K'gari North	24°42.0'S	153°16.283'E	-24.7	153.271384
2	GUZ06	Offshore K'gari North	24°39.0'S	153°18.0'E	-24.65	153.3
3	GUZ06	Offshore K'gari North	24°37.53'S	153°18.0'E	-24.625506	153.3
4	GUZ06	Offshore K'gari North	25°4.395'S	153°23.416'E	-25.07325	153.390268
5	GUZ06	Offshore K'gari North	25°4.395'S	153°20.063'E	-25.07325	153.33438

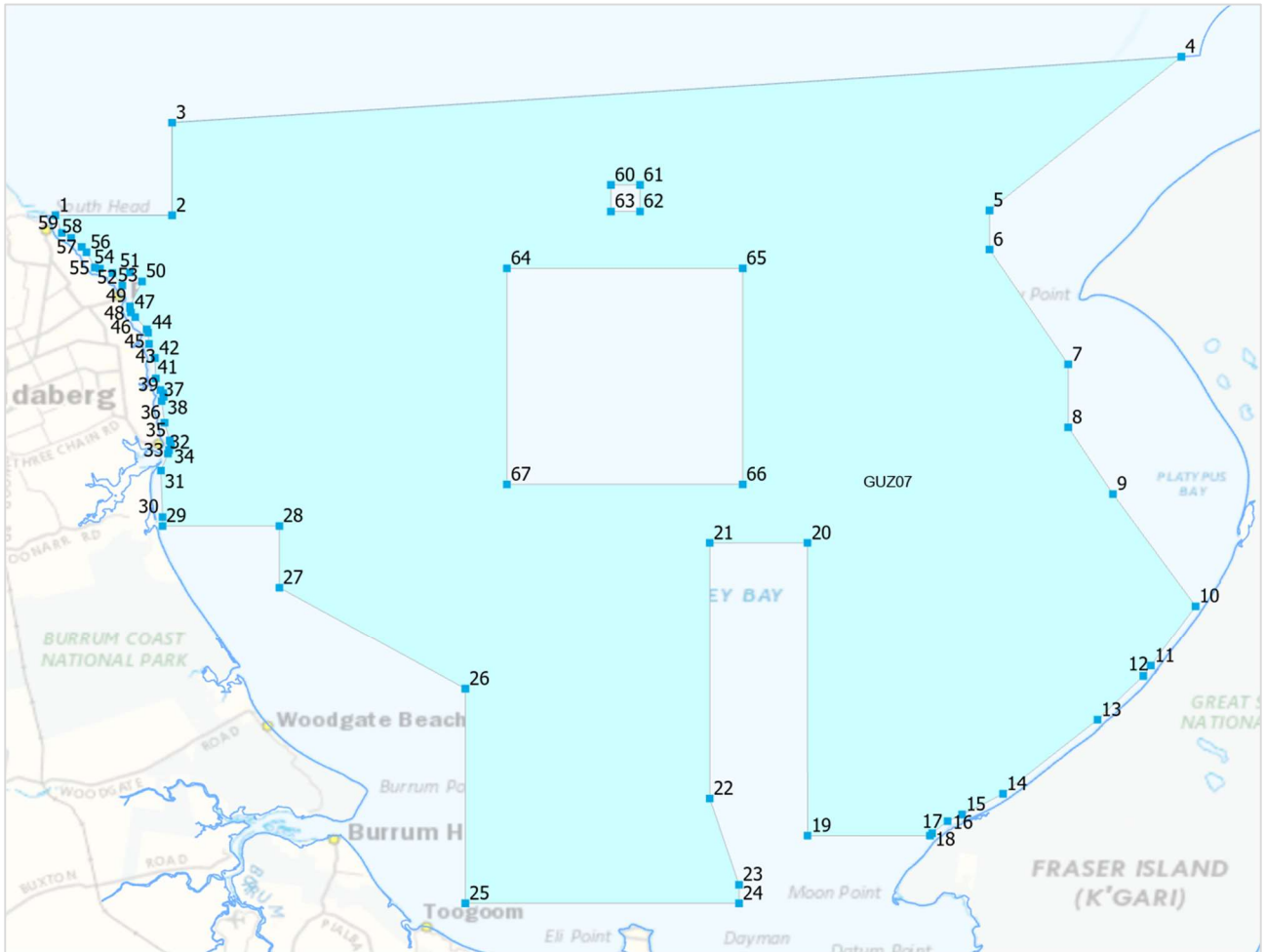
Note:

Points 1 to 3 align with the proposed revision of the Fraser Island declared Fish Habitat Area.

Between points 3 and 4, the boundary is the limit of Queensland Coastal Waters.

Between points 5 and 1, the boundary is defined by a 500m coastal line, which is the imaginary line, every point of which is 500m seaward from the marine park boundary.

GUZ07: Hervey Bay



Note:

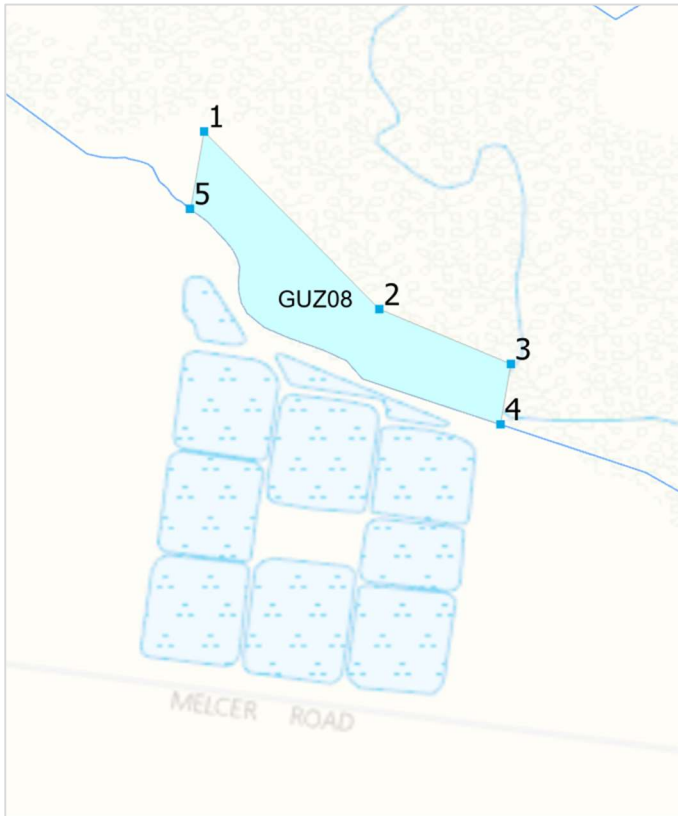
Points 1 to 3 align with the boundary of the Port Limits for the Port of Bundaberg (a port under the *Transport Infrastructure Act 1994*).

Between points 3 and 4, the boundary is the limit of Queensland Coastal Waters.

Coord inate	Zone	Zone name	Latitude (DDM)	Longitude (DDM)	Latitude (DD)	Longitude (DD)
1	GUZ07	Hervey Bay	24°45.599'S	152°25.221'E	-24.759987	152.42035
2	GUZ07	Hervey Bay	24°45.599'S	152°30.0'E	-24.759987	152.500006
3	GUZ07	Hervey Bay	24°41.811'S	152°30.0'E	-24.696857	152.500006
4	GUZ07	Hervey Bay	24°39.115'S	153°11.3'E	-24.651923	153.188333
5	GUZ07	Hervey Bay	24°45.4'S	153°3.45'E	-24.756667	153.0575
6	GUZ07	Hervey Bay	24°47.0'S	153°3.45'E	-24.783333	153.0575
7	GUZ07	Hervey Bay	24°51.696'S	153°6.67'E	-24.8616	153.111167
8	GUZ07	Hervey Bay	24°54.27'S	153°6.67'E	-24.9045	153.111167
9	GUZ07	Hervey Bay	24°57.0'S	153°8.501'E	-24.95	153.141683
10	GUZ07	Hervey Bay	25°1.594'S	153°11.884'E	-25.026567	153.198067
11	GUZ07	Hervey Bay	25°4.054'S	153°10.048'E	-25.067567	153.167467
12	GUZ07	Hervey Bay	25°4.481'S	153°9.741'E	-25.074683	153.16235
13	GUZ07	Hervey Bay	25°6.264'S	153°7.868'E	-25.1044	153.131133
14	GUZ07	Hervey Bay	25°9.291'S	153°4.002'E	-25.15485	153.0667
15	GUZ07	Hervey Bay	25°10.138'S	153°2.325'E	-25.168967	153.03875
16	GUZ07	Hervey Bay	25°10.406'S	153°1.73'E	-25.173433	153.028833
17	GUZ07	Hervey Bay	25°10.9'S	153°1.1'E	-25.181667	153.018333
18	GUZ07	Hervey Bay	25°11.0'S	153°1.011'E	-25.183333	153.01685
19	GUZ07	Hervey Bay	25°11.0'S	152°56.0'E	-25.183333	152.933333
20	GUZ07	Hervey Bay	24°59.0'S	152°56.0'E	-24.983333	152.933333
21	GUZ07	Hervey Bay	24°59.0'S	152°52.0'E	-24.983333	152.866667
22	GUZ07	Hervey Bay	25°9.48'S	152°52.0'E	-25.158	152.866667
23	GUZ07	Hervey Bay	25°13.0'S	152°53.2'E	-25.216667	152.886667
24	GUZ07	Hervey Bay	25°13.76'S	152°53.2'E	-25.229333	152.886667
25	GUZ07	Hervey Bay	25°13.76'S	152°42.0'E	-25.229333	152.7
26	GUZ07	Hervey Bay	25°4.999'S	152°42.0'E	-25.083317	152.7
27	GUZ07	Hervey Bay	25°0.834'S	152°34.389'E	-25.0139	152.57315
28	GUZ07	Hervey Bay	24°58.31'S	152°34.389'E	-24.971833	152.57315
29	GUZ07	Hervey Bay	24°58.31'S	152°29.607'E	-24.971833	152.49345
30	GUZ07	Hervey Bay	24°57.942'S	152°29.607'E	-24.965694	152.49345
31	GUZ07	Hervey Bay	24°56.044'S	152°29.54'E	-24.934067	152.492333
32	GUZ07	Hervey Bay	24°55.347'S	152°29.83'E	-24.92245	152.497167
33	GUZ07	Hervey Bay	24°55.199'S	152°29.874'E	-24.919983	152.4979
34	GUZ07	Hervey Bay	24°55.009'S	152°29.951'E	-24.916817	152.499183
35	GUZ07	Hervey Bay	24°54.809'S	152°29.904'E	-24.913483	152.4984
36	GUZ07	Hervey Bay	24°54.084'S	152°29.687'E	-24.9014	152.494783
37	GUZ07	Hervey Bay	24°53.202'S	152°29.574'E	-24.8867	152.4929
38	GUZ07	Hervey Bay	24°53.023'S	152°29.655'E	-24.883717	152.49425
39	GUZ07	Hervey Bay	24°52.867'S	152°29.633'E	-24.881117	152.493883
40	GUZ07	Hervey Bay	24°52.746'S	152°29.524'E	-24.8791	152.492067
41	GUZ07	Hervey Bay	24°52.271'S	152°29.33'E	-24.871183	152.488833
42	GUZ07	Hervey Bay	24°51.434'S	152°29.293'E	-24.857233	152.488217
43	GUZ07	Hervey Bay	24°50.86'S	152°29.055'E	-24.847667	152.48425
44	GUZ07	Hervey Bay	24°50.4'S	152°29.018'E	-24.84	152.483627
45	GUZ07	Hervey Bay	24°50.261'S	152°28.964'E	-24.837683	152.482733
46	GUZ07	Hervey Bay	24°49.765'S	152°28.49'E	-24.829417	152.474833

Coordinate	Zone	Zone name	Latitude (DDM)	Longitude (DDM)	Latitude (DD)	Longitude (DD)
47	GUZ07	Hervey Bay	24°49.573'S	152°28.313'E	-24.826217	152.471883
48	GUZ07	Hervey Bay	24°49.394'S	152°28.271'E	-24.823233	152.471183
49	GUZ07	Hervey Bay	24°49.32'S	152°28.271'E	-24.822	152.471183
50	GUZ07	Hervey Bay	24°48.304'S	152°28.771'E	-24.805067	152.479517
51	GUZ07	Hervey Bay	24°47.938'S	152°28.274'E	-24.798967	152.471233
52	GUZ07	Hervey Bay	24°48.477'S	152°27.962'E	-24.80795	152.466033
53	GUZ07	Hervey Bay	24°47.961'S	152°27.557'E	-24.79935	152.459283
54	GUZ07	Hervey Bay	24°47.777'S	152°27.046'E	-24.796283	152.450767
55	GUZ07	Hervey Bay	24°47.736'S	152°26.834'E	-24.7956	152.447233
56	GUZ07	Hervey Bay	24°47.107'S	152°26.495'E	-24.785117	152.441583
57	GUZ07	Hervey Bay	24°46.895'S	152°26.3'E	-24.781583	152.438333
58	GUZ07	Hervey Bay	24°46.525'S	152°25.866'E	-24.775417	152.4311
59	GUZ07	Hervey Bay	24°46.321'S	152°25.489'E	-24.772017	152.424817
60	GUZ07	Hervey Bay	24°44.357'S	152°47.958'E	-24.739283	152.7993
61	GUZ07	Hervey Bay	24°44.357'S	152°49.146'E	-24.739283	152.8191
62	GUZ07	Hervey Bay	24°45.441'S	152°49.146'E	-24.75735	152.8191
63	GUZ07	Hervey Bay	24°45.441'S	152°47.958'E	-24.75735	152.7993
64	GUZ07	Hervey Bay	24°47.77'S	152°43.7'E	-24.796167	152.728333
65	GUZ07	Hervey Bay	24°47.77'S	152°53.35'E	-24.796167	152.889167
66	GUZ07	Hervey Bay	24°56.605'S	152°53.35'E	-24.943417	152.889167
67	GUZ07	Hervey Bay	24°56.605'S	152°43.7'E	-24.943417	152.728333

GUZ08: Elliott River



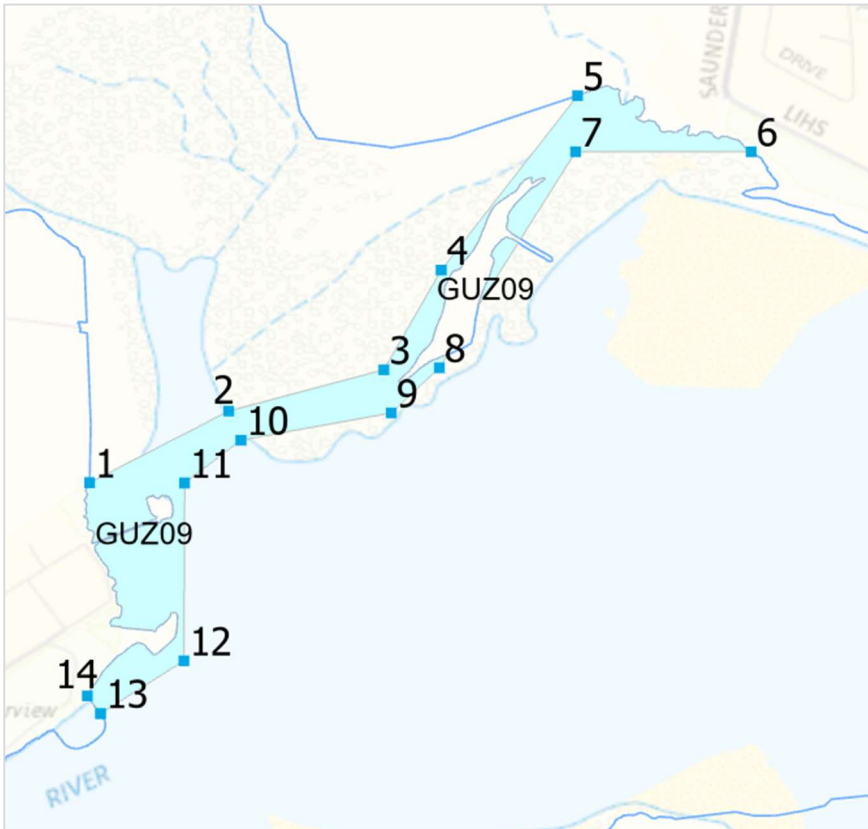
Coordinate	Zone	Zone name	Latitude (DDM)	Longitude (DDM)	Latitude (DD)	Longitude (DD)
1	GUZ08	Elliott River	24°55.067'S	152°28.17'E	-24.917783	152.4695
2	GUZ08	Elliott River	24°55.148'S	152°28.25'E	-24.919133	152.470833
3	GUZ08	Elliott River	24°55.173'S	152°28.31'E	-24.91955	152.471833
4	GUZ08	Elliott River	24°55.201'S	152°28.305'E	-24.92001	152.471754
5	GUZ08	Elliott River	24°55.102'S	152°28.164'E	-24.918371	152.469393

Note:

Points 1 to 4 and points 5 to 1 align with the proposed revision of the Elliott River declared Fish Habitat Area.

Between points 4 and 5, the boundary is the marine park outer boundary.

GUZ09: Riverview North



Coord inate	Zone	Zone name	Latitude (DDM)	Longitude (DDM)	Latitude (DD)	Longitude (DD)
1	GUZ09	Riverview North	24°55.526'S	152°28.49'E	-24.925437	152.474834
2	GUZ09	Riverview North	24°55.45'S	152°28.638'E	-24.924167	152.4773
3	GUZ09	Riverview North	24°55.406'S	152°28.803'E	-24.923433	152.48005
4	GUZ09	Riverview North	24°55.3'S	152°28.864'E	-24.921667	152.481067
5	GUZ09	Riverview North	24°55.114'S	152°29.009'E	-24.91857	152.483483
6	GUZ09	Riverview North	24°55.174'S	152°29.194'E	-24.919567	152.486561
7	GUZ09	Riverview North	24°55.174'S	152°29.007'E	-24.919567	152.48345
8	GUZ09	Riverview North	24°55.404'S	152°28.862'E	-24.9234	152.481033
9	GUZ09	Riverview North	24°55.452'S	152°28.811'E	-24.9242	152.480183
10	GUZ09	Riverview North	24°55.481'S	152°28.651'E	-24.924683	152.477517
11	GUZ09	Riverview North	24°55.527'S	152°28.591'E	-24.925442	152.476517
12	GUZ09	Riverview North	24°55.716'S	152°28.59'E	-24.928598	152.476506
13	GUZ09	Riverview North	24°55.772'S	152°28.502'E	-24.929536	152.475025
14	GUZ09	Riverview North	24°55.753'S	152°28.487'E	-24.929221	152.474791

Note:

Points 1 to 5 and points 6 to 13 align with the proposed revision of the Elliott River declared Fish Habitat Area.

Between points 5 and 6, points 13 and 14 and points 14 and 1, the boundary is the marine park outer boundary.

GUZ10: Riverview South



Coord inate	Zone	Zone name	Latitude (DDM)	Longitude (DDM)	Latitude (DD)	Longitude (DD)
1	GUZ10	Riverview South	24°55.937'S	152°28.172'E	-24.932281	152.46953
2	GUZ10	Riverview South	24°55.789'S	152°28.452'E	-24.929814	152.474197
3	GUZ10	Riverview South	24°55.799'S	152°28.459'E	-24.929987	152.474323
4	GUZ10	Riverview South	24°55.968'S	152°28.196'E	-24.932792	152.469925

Note:

Between points 1 and 3, the boundary is the marine park outer boundary.

Points 3 to 4 and points 4 to 1 align with the proposed revision of the Elliott River declared Fish Habitat Area.

GUZ11: Walkers Point



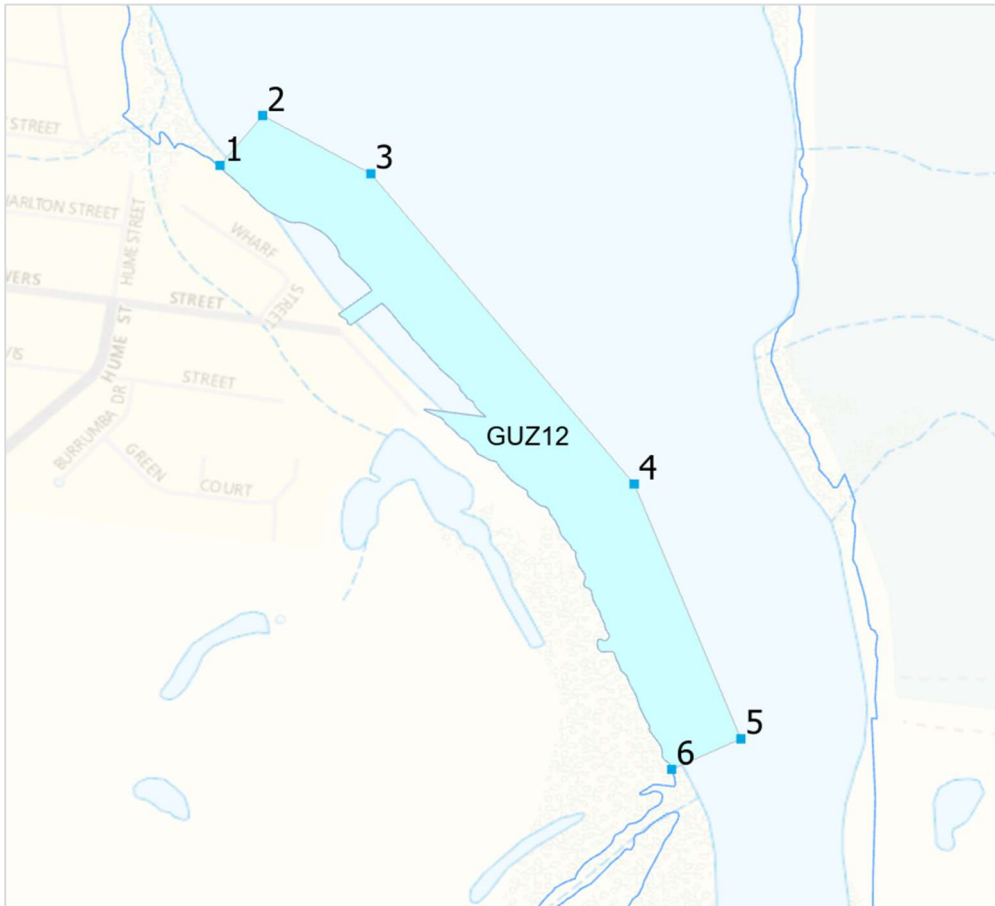
Coord inate	Zone	Zone name	Latitude (DDM)	Longitude (DDM)	Latitude (DD)	Longitude (DD)
1	GUZ11	Walkers Point	25°10.164'S	152°35.02'E	-25.1694	152.583671
2	GUZ11	Walkers Point	25°10.217'S	152°35.594'E	-25.17028	152.593233
3	GUZ11	Walkers Point	25°10.269'S	152°35.61'E	-25.17115	152.5935
4	GUZ11	Walkers Point	25°10.327'S	152°35.4'E	-25.172117	152.59
5	GUZ11	Walkers Point	25°10.336'S	152°35.309'E	-25.172267	152.588483
6	GUZ11	Walkers Point	25°10.307'S	152°35.101'E	-25.171783	152.585017
7	GUZ11	Walkers Point	25°10.28'S	152°35.021'E	-25.171333	152.583683
8	GUZ11	Walkers Point	25°10.202'S	152°34.964'E	-25.170033	152.582733

Note:

Between points 1 and 2, the boundary is the marine park outer boundary.

Points 3 to 8 align with the proposed revision of the Burrum declared Fish Habitat Area.

GUZ12: Buxton



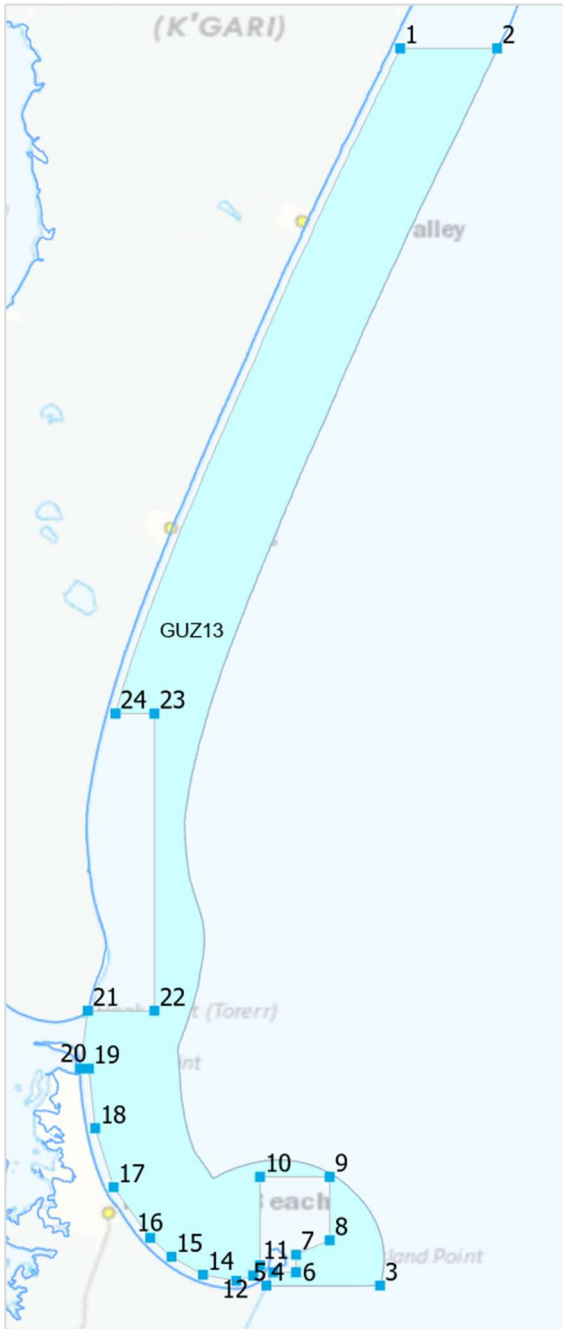
Coord inate	Zone	Zone name	Latitude (DDM)	Longitude (DDM)	Latitude (DD)	Longitude (DD)
1	GUZ12	Buxton	25°11.667'S	152°32.451'E	-25.19445	152.540854
2	GUZ12	Buxton	25°11.631'S	152°32.482'E	-25.19385	152.541367
3	GUZ12	Buxton	25°11.673'S	152°32.56'E	-25.19455	152.542667
4	GUZ12	Buxton	25°11.897'S	152°32.75'E	-25.198283	152.545833
5	GUZ12	Buxton	25°12.081'S	152°32.827'E	-25.20135	152.547117
6	GUZ12	Buxton	25°12.103'S	152°32.777'E	-25.201717	152.546285

Note:

Points 1 to 6 align with the Burrum declared Fish Habitat Area.

Between points 6 and 1, the boundary is the marine park outer boundary.

GUZ13: Offshore K'gari South



Note:

Between points 2 and 3, the boundary is the limit of Queensland Coastal Waters.

Between points 3 and 5, the boundary is the marine park outer boundary.

Between points 24 and 1, the boundary is defined by a 500m coastal line, which is the imaginary line, every point of which is 500m seaward from the marine park boundary.

Coord inate	Zone	Zone name	Latitude (DDM)	Longitude (DDM)	Latitude (DD)	Longitude (DD)
1	GUZ13	Offshore K'gari South	25°14.278'S	153°15.424'E	-25.237967	153.257073
2	GUZ13	Offshore K'gari South	25°14.278'S	153°18.769'E	-25.237967	153.312822
3	GUZ13	Offshore K'gari South	25°56.916'S	153°14.733'E	-25.948604	153.245548
4	GUZ13	Offshore K'gari South	25°56.916'S	153°10.818'E	-25.948604	153.180301
5	GUZ13	Offshore K'gari South	25°56.455'S	153°11.054'E	-25.940917	153.184229
6	GUZ13	Offshore K'gari South	25°56.455'S	153°11.838'E	-25.940917	153.1973
7	GUZ13	Offshore K'gari South	25°55.846'S	153°11.838'E	-25.930767	153.1973
8	GUZ13	Offshore K'gari South	25°55.353'S	153°13.0'E	-25.92255	153.216667
9	GUZ13	Offshore K'gari South	25°53.166'S	153°13.0'E	-25.8861	153.216667
10	GUZ13	Offshore K'gari South	25°53.166'S	153°10.6'E	-25.8861	153.176667
11	GUZ13	Offshore K'gari South	25°56.209'S	153°10.6'E	-25.936817	153.176667
12	GUZ13	Offshore K'gari South	25°56.569'S	153°10.367'E	-25.942817	153.172783
13	GUZ13	Offshore K'gari South	25°56.747'S	153°9.78'E	-25.945783	153.163
14	GUZ13	Offshore K'gari South	25°56.541'S	153°8.634'E	-25.94235	153.1439
15	GUZ13	Offshore K'gari South	25°55.921'S	153°7.55'E	-25.932017	153.125833
16	GUZ13	Offshore K'gari South	25°55.273'S	153°6.815'E	-25.921217	153.113583
17	GUZ13	Offshore K'gari South	25°53.524'S	153°5.551'E	-25.892067	153.092517
18	GUZ13	Offshore K'gari South	25°51.49'S	153°4.922'E	-25.858167	153.082033
19	GUZ13	Offshore K'gari South	25°49.438'S	153°4.703'E	-25.823967	153.078383
20	GUZ13	Offshore K'gari South	25°49.438'S	153°4.401'E	-25.823967	153.073356
21	GUZ13	Offshore K'gari South	25°47.446'S	153°4.669'E	-25.790767	153.077809
22	GUZ13	Offshore K'gari South	25°47.446'S	153°6.96'E	-25.790767	153.116
23	GUZ13	Offshore K'gari South	25°37.2'S	153°6.96'E	-25.62	153.116
24	GUZ13	Offshore K'gari South	25°37.2'S	153°5.619'E	-25.62	153.093658

GUZ14: Hervey Bay foreshore

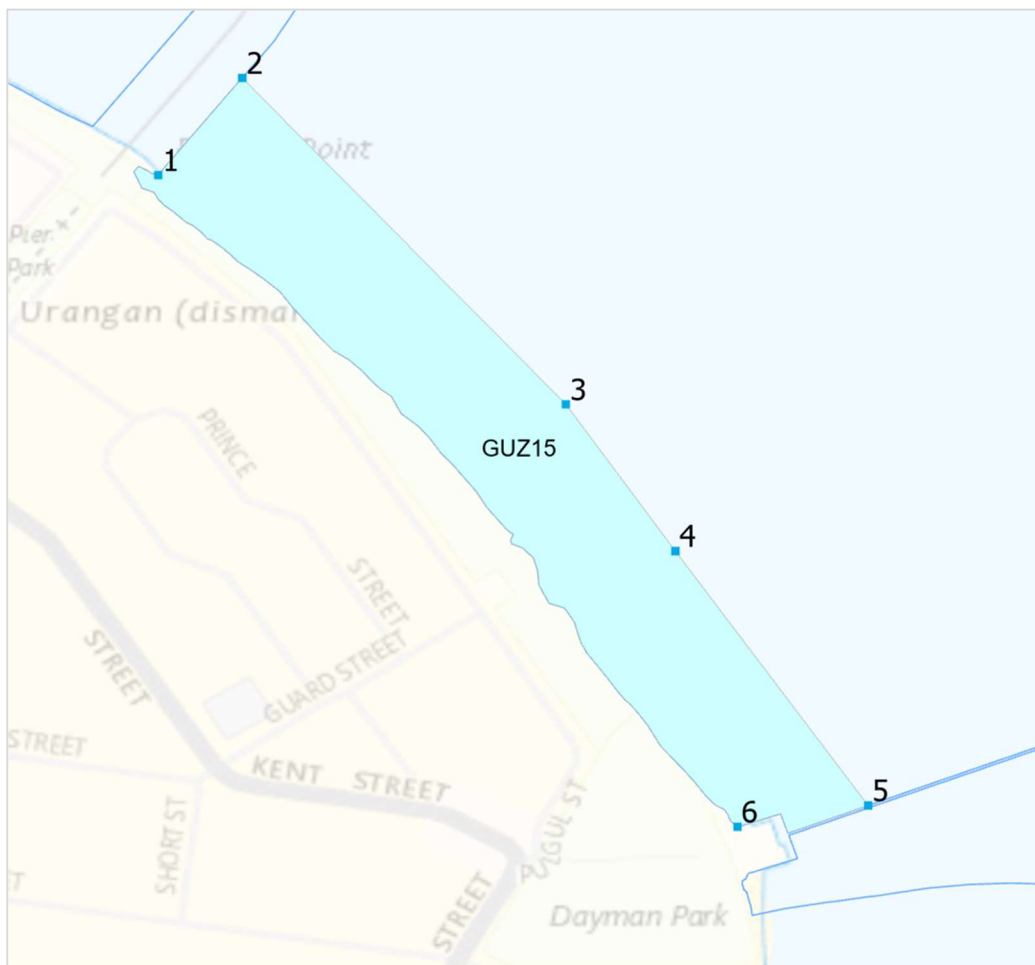


Coord inate	Zone	Zone name	Latitude (DDM)	Longitude (DDM)	Latitude (DD)	Longitude (DD)
1	GUZ14	Hervey Bay foreshore	25°16.498'S	152°49.988'E	-25.274967	152.833136
2	GUZ14	Hervey Bay foreshore	25°16.917'S	152°51.158'E	-25.28195	152.852633
3	GUZ14	Hervey Bay foreshore	25°16.979'S	152°51.6'E	-25.282983	152.86
4	GUZ14	Hervey Bay foreshore	25°16.949'S	152°52.124'E	-25.282483	152.868733
5	GUZ14	Hervey Bay foreshore	25°16.892'S	152°52.714'E	-25.281533	152.878567
6	GUZ14	Hervey Bay foreshore	25°16.8'S	152°53.219'E	-25.28	152.886983
7	GUZ14	Hervey Bay foreshore	25°16.77'S	152°53.647'E	-25.2795	152.894117
8	GUZ14	Hervey Bay foreshore	25°16.78'S	152°53.853'E	-25.279667	152.89755
9	GUZ14	Hervey Bay foreshore	25°16.809'S	152°54.01'E	-25.28015	152.900167
10	GUZ14	Hervey Bay foreshore	25°16.876'S	152°54.16'E	-25.281267	152.902667
11	GUZ14	Hervey Bay foreshore	25°16.911'S	152°54.238'E	-25.28185	152.903969
12	GUZ14	Hervey Bay foreshore	25°16.956'S	152°54.199'E	-25.282602	152.903315

Note:

Between points 11 and 12 and points 12 and 1, the boundary is the marine park outer boundary.

GUZ15: Urangan

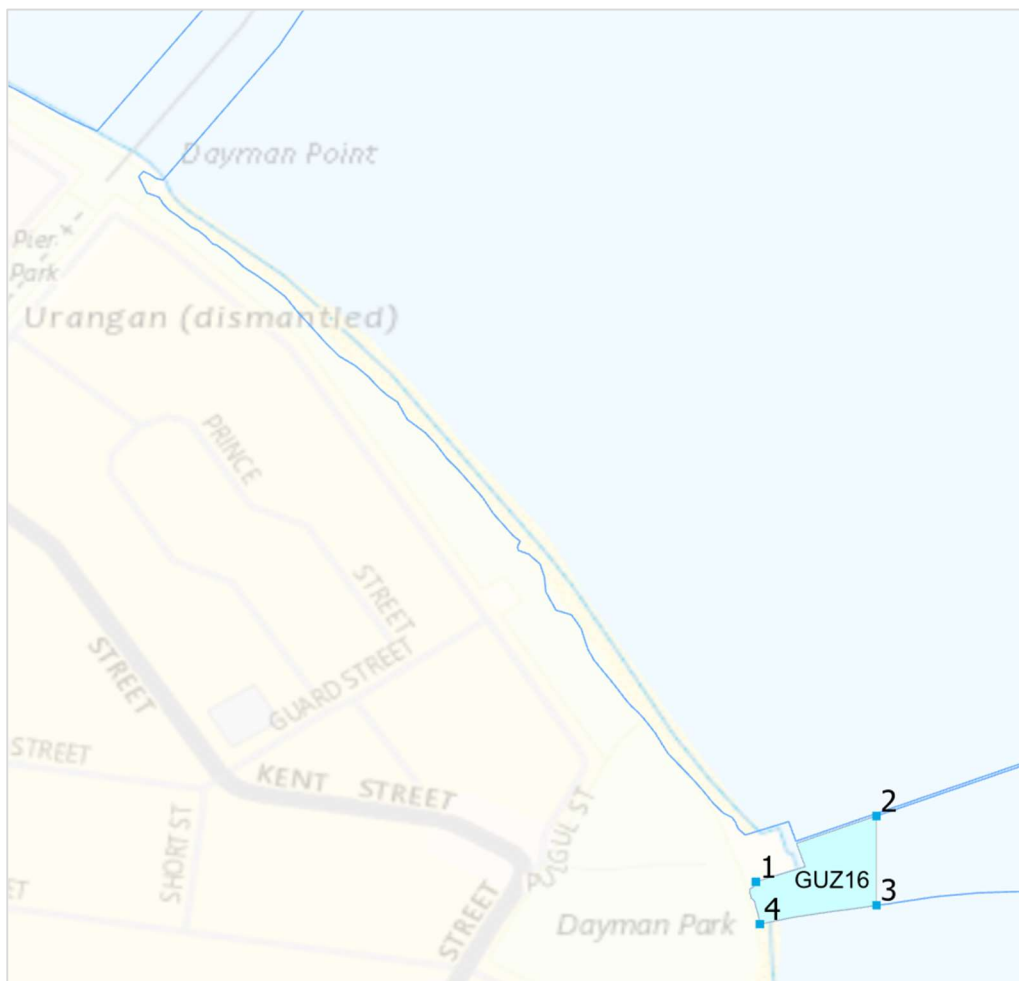


Coord inate	Zone	Zone name	Latitude (DDM)	Longitude (DDM)	Latitude (DD)	Longitude (DD)
1	GUZ15	Urangan	25°16.978'S	152°54.229'E	-25.282973	152.903813
2	GUZ15	Urangan	25°16.934'S	152°54.267'E	-25.282233	152.904453
3	GUZ15	Urangan	25°17.083'S	152°54.415'E	-25.284717	152.906917
4	GUZ15	Urangan	25°17.15'S	152°54.465'E	-25.285833	152.90775
5	GUZ15	Urangan	25°17.266'S	152°54.553'E	-25.287769	152.909217
6	GUZ15	Urangan	25°17.276'S	152°54.493'E	-25.287932	152.908223

Note:

Between points 1 and 2, points 5 and 6 and points 6 and 1, the boundary is the marine park outer boundary.

GUZ16: Urangan South

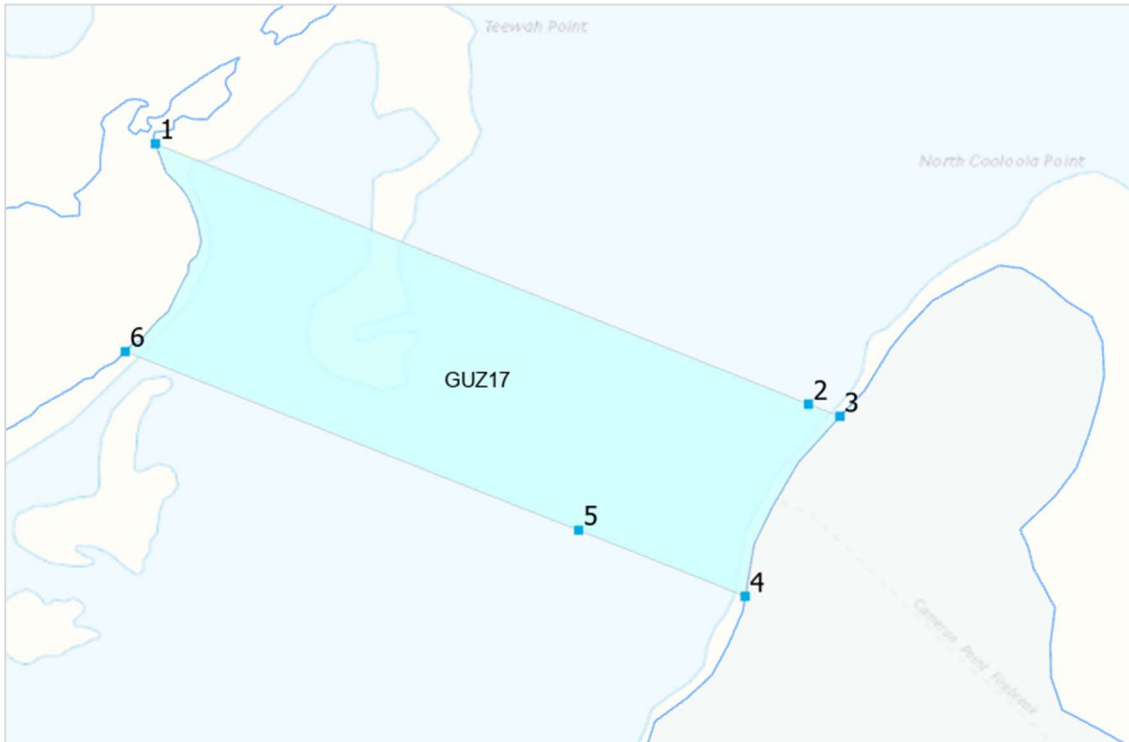


Coord inate	Zone	Zone name	Latitude (DDM)	Longitude (DDM)	Latitude (DD)	Longitude (DD)
1	GUZ16	Urangan South	25°17.297'S	152°54.498'E	-25.288287	152.908304
2	GUZ16	Urangan South	25°17.267'S	152°54.553'E	-25.287788	152.909217
3	GUZ16	Urangan South	25°17.308'S	152°54.553'E	-25.288464	152.909217
4	GUZ16	Urangan South	25°17.316'S	152°54.5'E	-25.288606	152.908334

Note:

Between points 1 and 2, points 3 and 4 and points 4 and 1, the boundary is the marine park outer boundary.

GUZ17: Teewah Point



Coordinate	Zone	Zone name	Latitude (DDM)	Longitude (DDM)	Latitude (DD)	Longitude (DD)
1	GUZ17	Teewah Point	25°56.127'S	153°1.686'E	-25.93545	153.028098
2	GUZ17	Teewah Point	25°56.34'S	153°2.22'E	-25.939	153.037
3	GUZ17	Teewah Point	25°56.35'S	153°2.246'E	-25.939167	153.03743
4	GUZ17	Teewah Point	25°56.497'S	153°2.168'E	-25.941617	153.036138
5	GUZ17	Teewah Point	25°56.443'S	153°2.032'E	-25.940717	153.033867
6	GUZ17	Teewah Point	25°56.297'S	153°1.661'E	-25.938283	153.027688

Note:

Between points 3 and 4 and points 6 and 1, the boundary is the marine park outer boundary.