




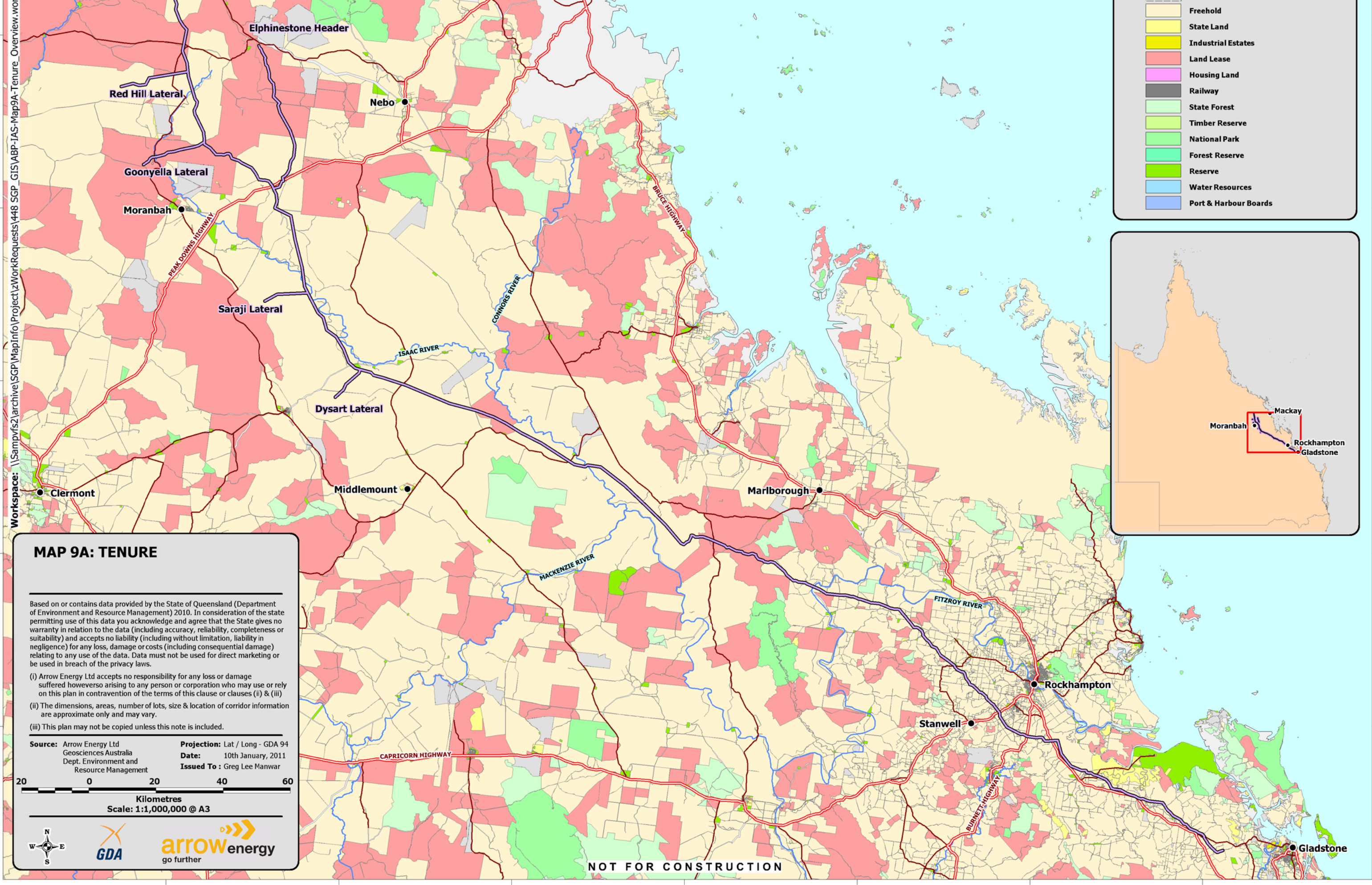
148°0' 148°30' 149°0' 149°30' 150°0' 150°30' 151°0'

# ARROW BOWEN PIPELINE PRELIMINARY ROUTE (REV A)

## LEGEND

-  ABP Route (Rev A)
-  Unknown
-  Freehold
-  State Land
-  Industrial Estates
-  Land Lease
-  Housing Land
-  Railway
-  State Forest
-  Timber Reserve
-  National Park
-  Forest Reserve
-  Reserve
-  Water Resources
-  Port & Harbour Boards

Workspace: \\Sampvifs2\archive\SGP\MapInfo\Project\zWorkRequests\448\_SGP\_GIS\ABP-1AS-Map9A-Tenure\_Overview.wor



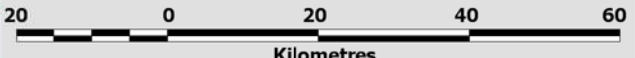
## MAP 9A: TENURE

Based on or contains data provided by the State of Queensland (Department of Environment and Resource Management) 2010. In consideration of the state permitting use of this data you acknowledge and agree that the State gives no warranty in relation to the data (including accuracy, reliability, completeness or suitability) and accepts no liability (including without limitation, liability in negligence) for any loss, damage or costs (including consequential damage) relating to any use of the data. Data must not be used for direct marketing or be used in breach of the privacy laws.

- (i) Arrow Energy Ltd accepts no responsibility for any loss or damage suffered howsoever arising to any person or corporation who may use or rely on this plan in contravention of the terms of this clause or clauses (ii) & (iii)
- (ii) The dimensions, areas, number of lots, size & location of corridor information are approximate only and may vary.
- (iii) This plan may not be copied unless this note is included.

**Source:** Arrow Energy Ltd  
Geosciences Australia  
Dept. Environment and Resource Management

**Projection:** Lat / Long - GDA 94  
**Date:** 10th January, 2011  
**Issued To :** Greg Lee Manwar



NOT FOR CONSTRUCTION

148°0'E 148°30' 149°0' 149°30' 150°0' 150°30' 151°0'

21°30' 22°0' 22°30' 23°0' 23°30' S

--21°30' --22°0' --22°30' --23°0' --23°30'