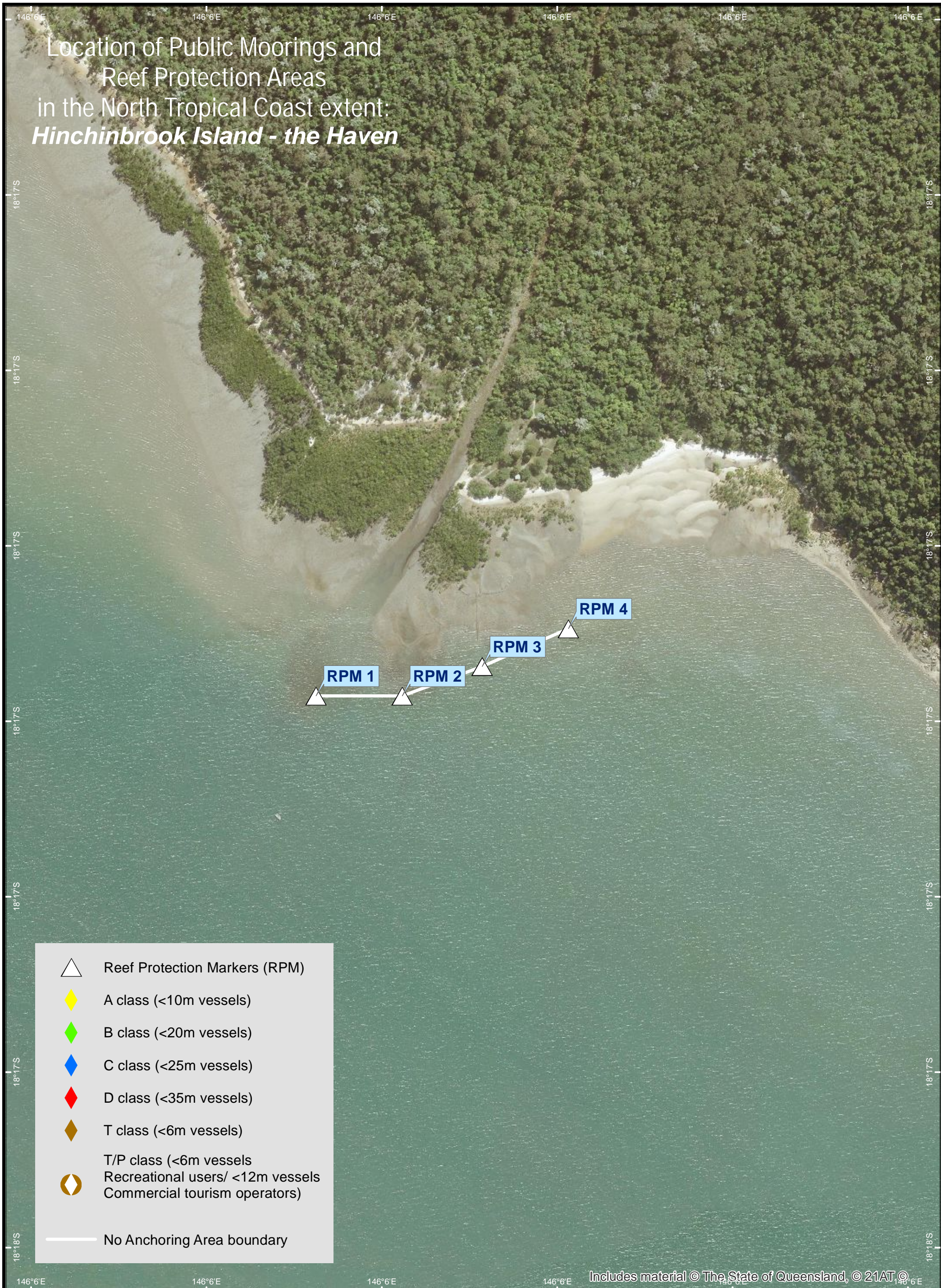







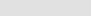
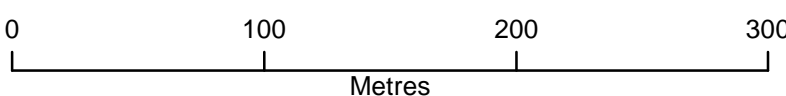


# Location of Public Moorings and Reef Protection Areas in the North Tropical Coast extent: *Hinchinbrook Island - the Haven*



-  Reef Protection Markers (RPM)
-  A class (<10m vessels)
-  B class (<20m vessels)
-  C class (<25m vessels)
-  D class (<35m vessels)
-  T class (<6m vessels)
-  T/P class (<6m vessels  
Recreational users/ <12m vessels  
Commercial tourism operators)
-  No Anchoring Area boundary

Includes material © The State of Queensland, © 21AT ©



COORDINATE SYSTEM: GCS GDA 1994  
HORIZONTAL DATUM: GDA 1994

